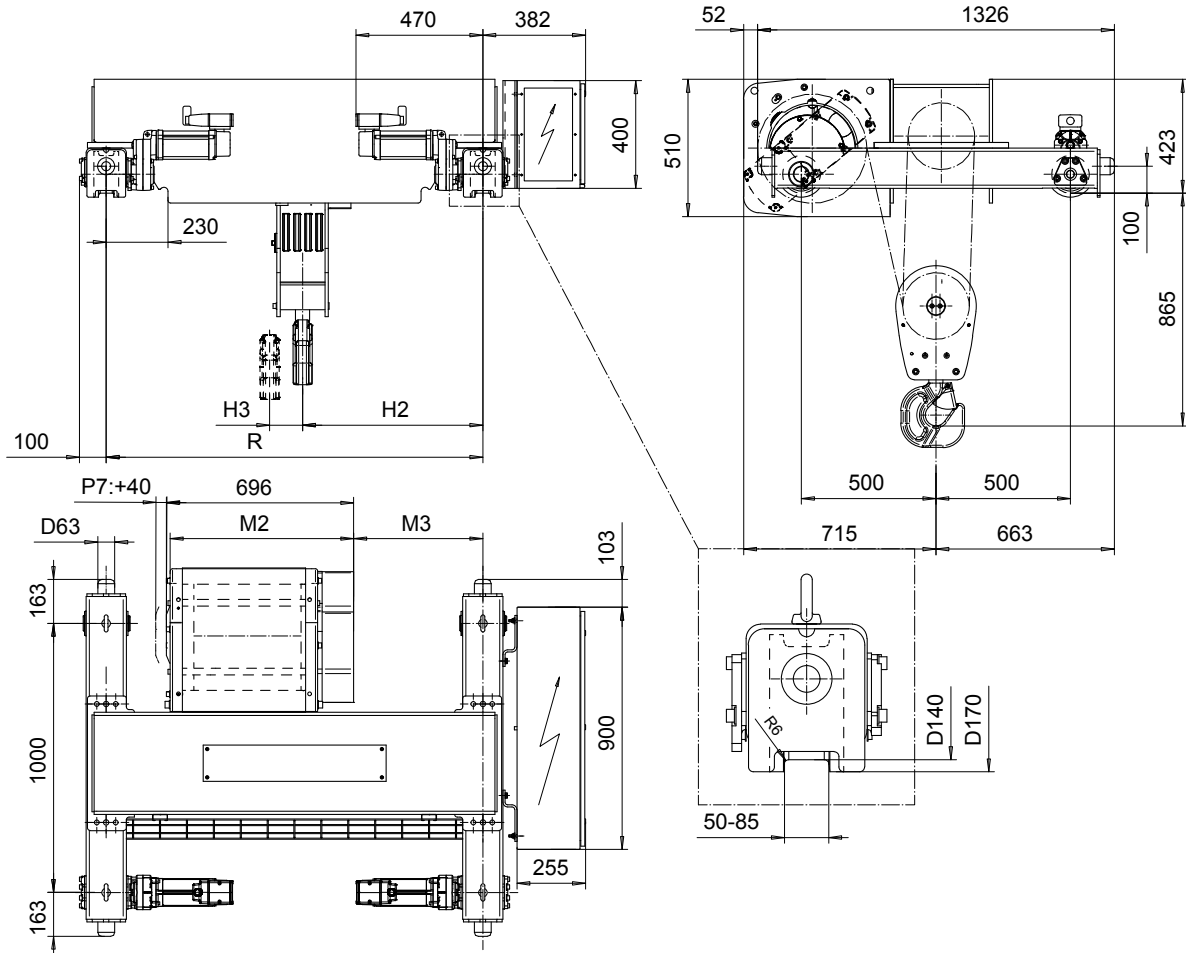


# DOUBLE GIRDER, MEDIUM, 8 PART SINGLE

Hoist type:

SX5 081...D0

SI-50Hz



Load (kg)	Class Fem/ISO	Hoisting speed (m/min)		
		Gear+Motor code:		
		F+P5	H+P6	J+P7
16000	2m/M5	2.5/0.4	4/0.7	5/0.8
20000	1Am/M4	2.5/0.4	4/0.7	5/0.8
+ weight (kg):		-	30	40

HOL (m)	Length code	M2 (mm)	M3 (mm)	H2 (mm)	H3 (mm)	min R (mm)	Weight (kg)
4.5	D	682	480	668	44	1400	780
6	E	802	630	818	53	1700	825
8	F	952	770	948	76	2000	860
10	G	1142	970	1148	98	2400	890

Note: minR is minimum rail gauge when second brake is supplied  
Standard rail gauges are 1400, 1700, 2000, and 2400 mm

This document is the absolute property of R&M Materials Handling, Inc. This document must not be copied without the written permission of R&M Materials Handling, Inc. The contents thereof must not be disclosed to a third party nor be used for any unauthorized purpose. Contravention will be prosecuted.

ETFPAL Design 2002-08-30 Date	ETFPAL Chd Appd	Ref Drawing	QC-M-08
SLEQDOCV Owner Dept	TROLLEY; DOUBLE GIRDER MEDIUM, 8 ROPE FALLS		1 of 12 Folder
R&M R&M MATERIALS HANDLING, INC. HOIST & CRANE PRODUCTS INTERNATIONAL, LLC	D002127-A		Issue 5