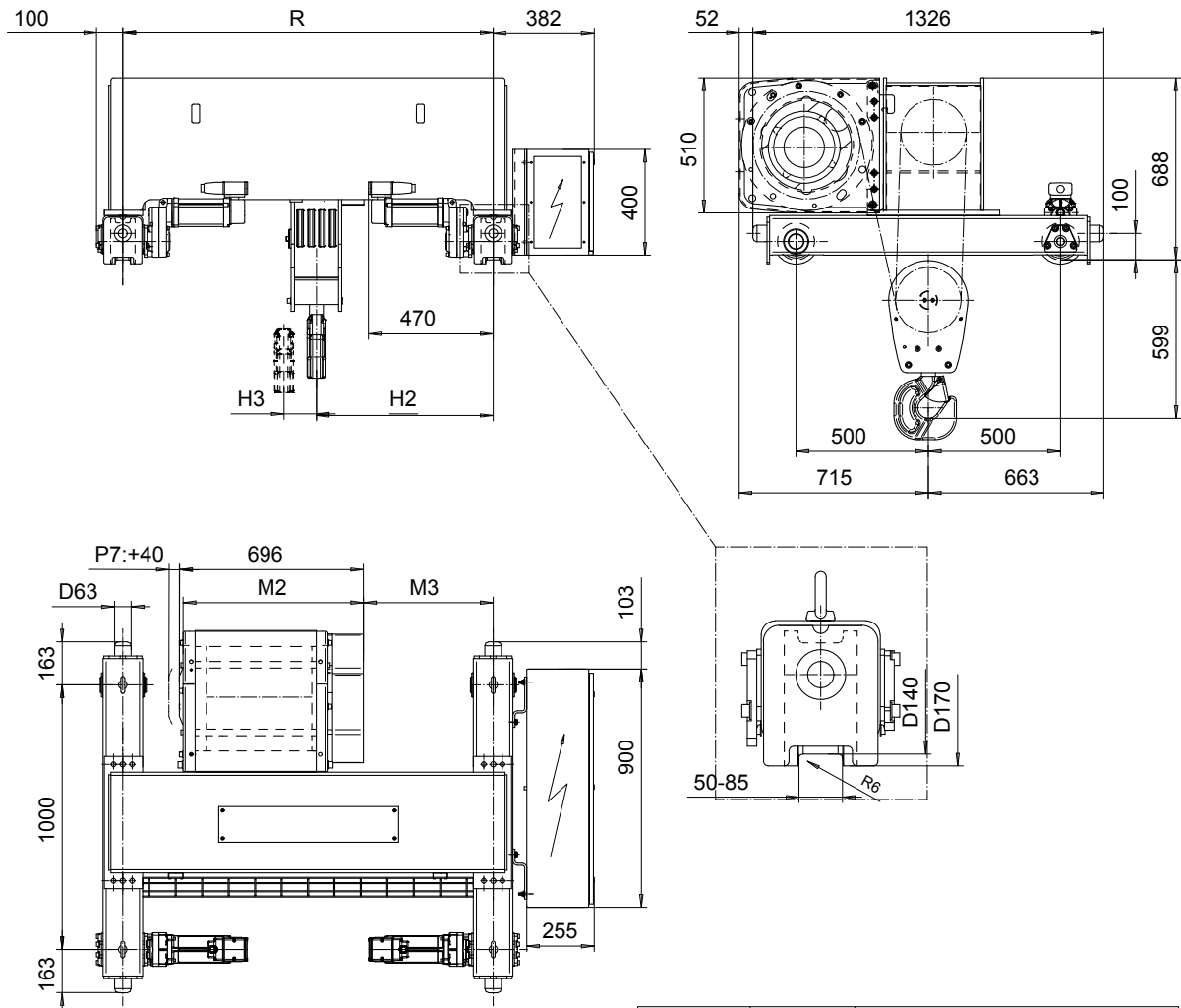


# DOUBLE GIRDER, HIGH CONNECTION, 8 PART SINGLE

Hoist type:

SX5 081...DH

SI-50Hz



Load (kg)	Class Fem/ISO	Hoisting speed (m/min)		
		Gear+Motor code:		
		F+P5	H+P6	J+P7
16000	2m/M5	2.5/0.4	4/0.7	5/0.8
20000	1Am/M4	2.5/0.4	4/0.7	5/0.8
+ weight (kg):		-	30	40

HOL (m)	Length code	M2 (mm)	M3 (mm)	H2 (mm)	H3 (mm)	min R (mm)	Weight (kg)
4.5	D	682	390	568	44	1200	845
6	E	802	490	668	53	1400	896
8	F	952	620	798	76	1700	965
10	G	1142	770	948	98	2000	1040

Note: minR is minimum rail gauge when second brake is supplied  
 Standard rail gauges are 1200, 1400, 1700, 2000, and 2400 mm

This document is the absolute property of R&M Materials Handling, Inc. This document must not be copied without the written permission of R&M Materials Handling, Inc. The contents thereof must not be disclosed to a third party nor be used for any unauthorized purpose. Contravention will be prosecuted.

ETTATA	ETTAV	Appr	Ref Drawing	QC-H-08
Design	Chd			
2002-10-16	TROLLEY; DOUBLE GIRDER			1 of 12 Folder
Date	HIGH, 8-ROPE FALLS			
SLEQDCV				Issue
Owner Dept				5
R&M	D002242-A			