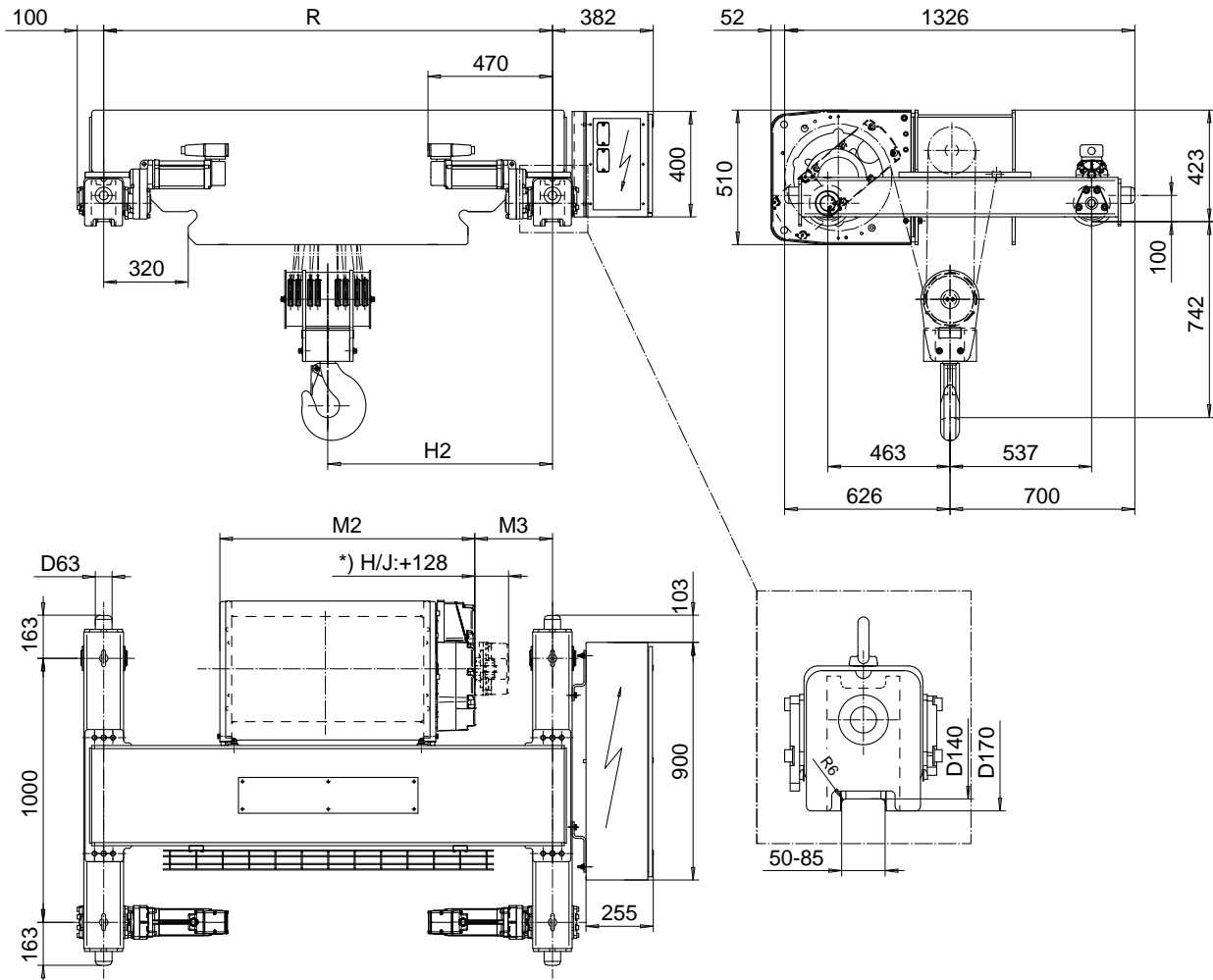


DOUBLE GIRDER, MEDIUM, 8 PART DOUBLE

Hoist type:

SX5 082...D0

SI-50Hz



Load (kg)	Class Fem/ISO	Hoisting speed (m/min)		
		Gear+Motor code:		
		F+P5	H+P6	J+P7
16000	2m/M5	2.5/0.4	4/0.7	5/0.8
20000	1Am/M4	2.5/0.4	4/0.7	5/0.8
+ weight (kg):		-	30	40

HOL (m)	Length code	M2 (mm)	M3 (mm)	H2 (mm)	min R (mm)	Weight (kg)
4.5	F	967	292	851	1700	890
6	G	1157	197	855	1700	950
8	H	1407	256	1032	2000	980
11.5	J	1757	256	1207	2400	1085

Note: minR is minimum rail gauge when second brake is supplied
 Primary brake is mounted on gearcase for drum lengths H and J
 Standard rail gauges are 1400, 1700, 2000, and 2400 mm

This document is the absolute property of R&M Materials Handling, Inc. This document must not be copied without the written permission of R&M Materials Handling, Inc. The contents thereof must not be disclosed to a third party nor be used for any unauthorized purpose. Contravention will be prosecuted.

ETTPAL Design 2002-08-30 Date	ETTPAL Chd Appd	Ref Drawing	QC-M-28
SLEQDOCV Owner Dept	TROLLEY; DOUBLE GIRDER MEDIUM, 2X8 ROPE FALLS		1 of 12 Folder
R&M MATERIALS HANDLING, INC. HOIST & CRANE PRODUCTS SHERBOURNE, ONT.	D002136-A		Issue 4