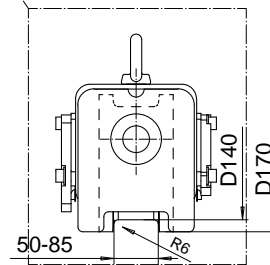
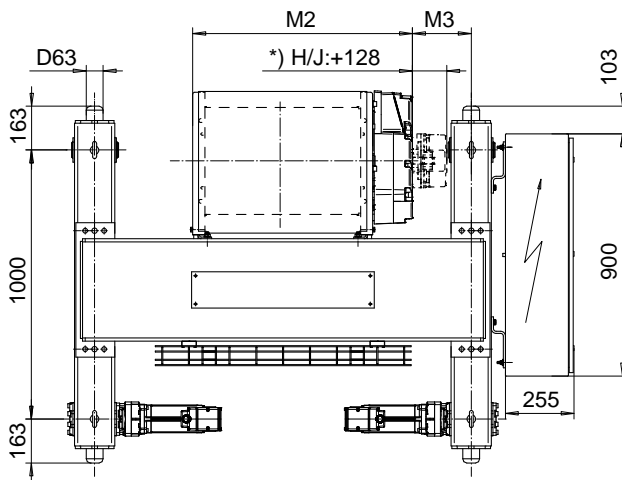
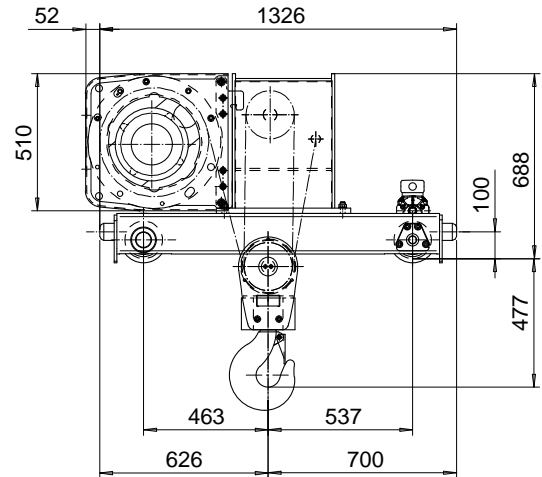
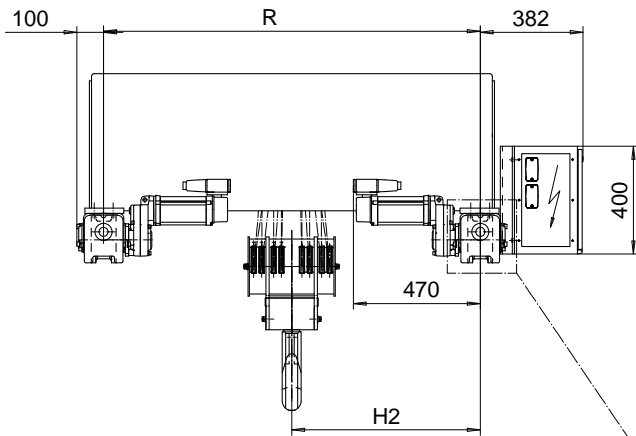


**DOUBLE GIRDER, HIGH CONNECTION, 8 PART DOUBLE**  
**Hoist type:**  
**SX5 082...DH**

SI-50Hz



Load (kg)	Class Fem/ISO	Hoisting speed (m/min)		
		Gear+Motor code:		
		F+P5	H+P6	J+P7
16000	2m/M5	2.5/0.4	4/0.7	5/0.8
20000	1Am/M4	2.5/0.4	4/0.7	5/0.8
+ weight (kg):		-	30	40

HOL	Length	M2	M3	H2	min R	Weight
(m)	code	(mm)	(mm)	(mm)	(mm)	(kg)
4.5	F	967	143	705	1400	940
6	G	1157	197	855	1700	1020
8	H	1407	105	855	1700	1065
11.5	J	1757	256	1211	2400	1230

Note: minR is minimum rail gauge when second brake is supplied  
 Standard rail gauges are 1200, 1400, 1700, 2000, and 2400 mm.  
 The brake is mounted on the gearcase on drum lengths H and J.

This document is the absolute property of R&M Materials Handling, Inc. This document must not be copied without the written permission of R&M Materials Handling, Inc. The contents thereof must not be disclosed to a third party nor be used for any unauthorized purpose. Contravention will be prosecuted.

ETTATA	ETTAV	Appd	Ref Drawing	QC-H-28
Design	Chd			
2002-10-17	TROLLEY; DOUBLE GIRDER			1 of 12 Folder
Date	HIGH, 2X8 ROPE FALLS			
SLEQDOCV				Issue
Owner Dept				4
R&M	R&M MATERIALS HANDLING, INC. HOIST & CRANE PRODUCTS SARASOTA, FL 34235			
	D002246-A			