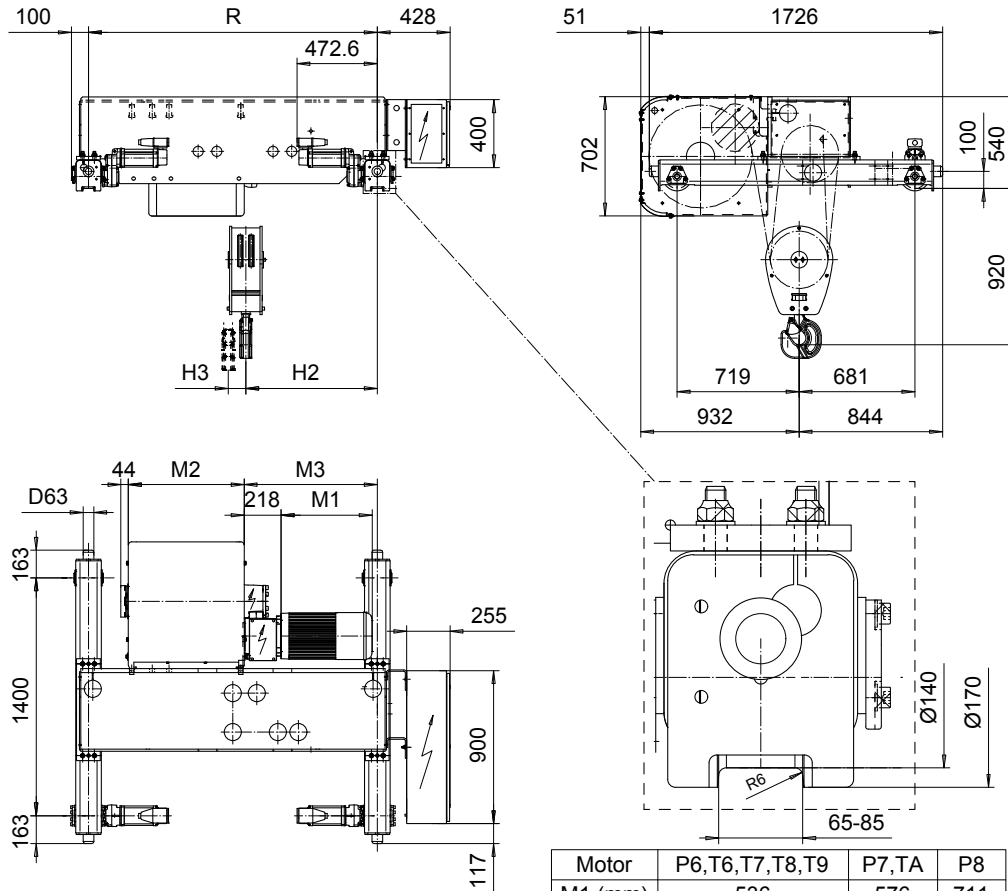


**DOUBLE GIRDER, MEDIUM, 4 PART SINGLE**  
**Hoist type:**  
**SX6 041...D0**

SI-50Hz



|         |                    |        |     |
|---------|--------------------|--------|-----|
| Motor   | P6, T6, T7, T8, T9 | P7, TA | P8  |
| M1 (mm) | 536                | 576    | 711 |

| HOL (m) | Length code | M2 (mm) | M3 (mm) | H2 (mm) | H3 (mm) | min R-max R (mm) | Weight (kg) |
|---------|-------------|---------|---------|---------|---------|------------------|-------------|
| 7.5     | C           | 462     | 658     | 668     | 69      | 1400-2400        | 1690        |
| 10.5    | D           | 562     | 783     | 788     | 94      | 1700-2400        | 1790        |
| 14      | E           | 682     | 783     | 788     | 125     | 1700-3100        | 1850        |
| 18      | F           | 832     | 933     | 914     | 161     | 2000-3800        | 1950        |
| 23.5    | G           | 1022    | 1143    | 1068    | 210     | 2400-4200        | 2110        |
| 30.5    | H           | 1272    | 1479    | 1395    | 273     | 3100-4200        | 2300        |
| 40      | J           | 1622    | 1543    | 1494    | 360     | 3400-4200        | 2610        |
| 48.5    | K           | 1922    | 1969    | 1856    | 434     | 4200             | 2960        |

| Load (kg) | Class Fem/ISO | Hoisting motor                    |          |            |      |       |
|-----------|---------------|-----------------------------------|----------|------------|------|-------|
|           |               | Hoisting speed (m/min): Gear code |          |            |      |       |
|           |               | 4/0.7: E                          | 5/0.8: F | 6.3/1.1: G | 8: H | 10: J |
| 12500     | 3m/M6         | P6, T6                            | P6, T6   | P7, T7     | T8   | T9    |
| 16000     | 2m/M5         | P6, T6                            | P6, T6   | P7, T7     | T8   | T9    |
| 20000     | 1Am/M4        | P6, T6                            | P7, T7   | P8, T8     | T9   | TA    |

Note: minR is minimum rail gauge when service platform is supplied  
 Standard rail gauges are 1400, 1700, 2000, 2400, 2700, 3100, 3400  
 3800, and 4200 mm  
 H2, M3 and weight are calculated at minR

This document is the absolute property of R&M Materials Handling, Inc. This document must not be copied without the written permission of R&M Materials Handling, Inc. The contents thereof must not be disclosed to a third party nor be used for any unauthorized purpose. Contravention will be prosecuted.

|               |                        |      |             |                   |
|---------------|------------------------|------|-------------|-------------------|
| ETFPAL Design | ETFPAL Chd             | Appd | Ref Drawing | QD-M-04           |
| 2002-09-02    | TROLLEY; DOUBLE GIRDER |      |             | 1 of 19<br>Folder |
| SLEQDCV Date  | MEDIUM, 4 ROPE FALLS   |      |             |                   |
| R&M           | D002144-A              |      |             | Issue 5           |