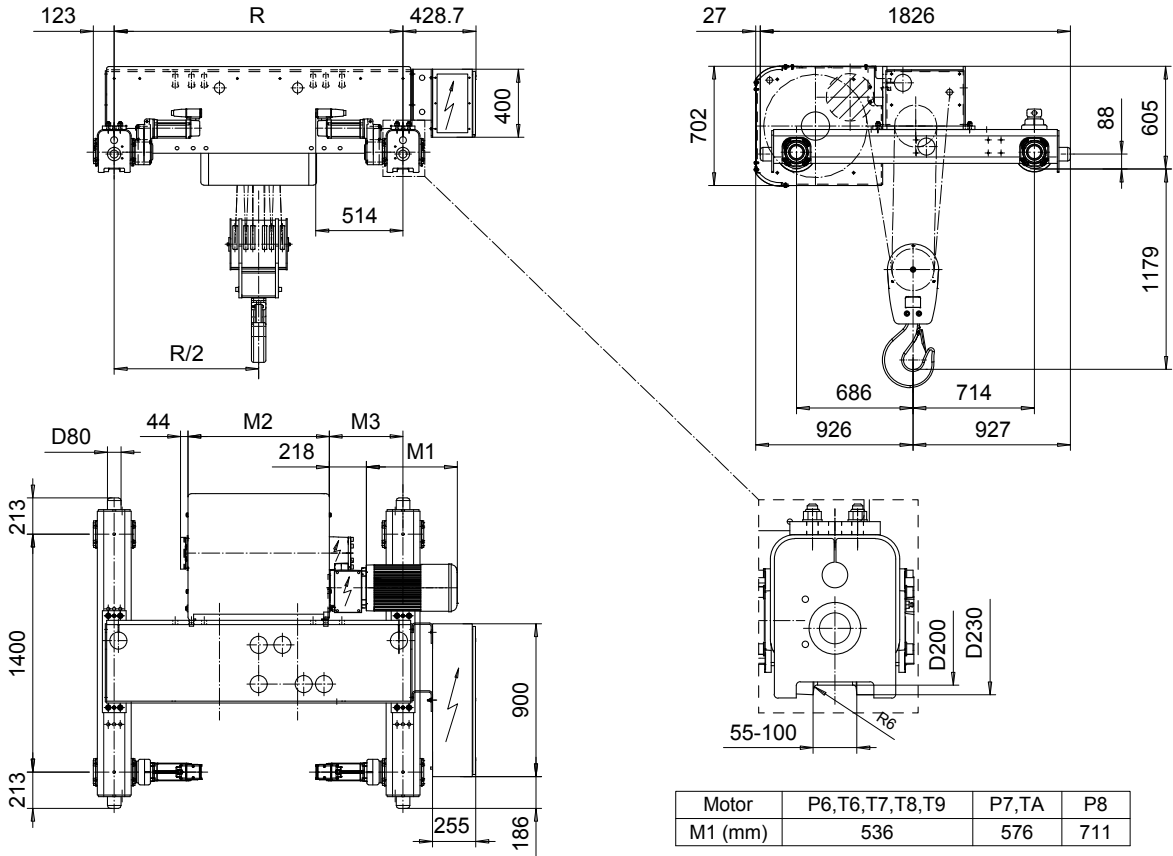


DOUBLE GIRDER, MEDIUM, 6 PART DOUBLE
Hoist type:
SX6 062...D0

SI-50Hz



| | | | |
|---------|----------------|-------|-----|
| Motor | P6,T6,T7,T8,T9 | P7,TA | P8 |
| M1 (mm) | 536 | 576 | 711 |

| HOL (m) | Length code | M2 (mm) | M3 (mm) | min R-max R (mm) | Weight (kg) |
|---------|-------------|---------|---------|------------------|-------------|
| 5.5 | E | 682 | 359 | 1400-2400 | 2060 |
| 7.5 | F | 832 | 434 | 1700-2400 | 2170 |
| 10 | G | 1022 | 489 | 2000-2700 | 2230 |
| 13 | H | 1272 | 364 | 2000-3100 | 2390 |
| 17.5 | J | 1622 | 389 | 2400-3400 | 2590 |
| 21.5 | K | 1922 | 389 | 2700-4200 | 2820 |
| 26 | L | 2272 | 414 | 3100-4200 | 3050 |
| 29 | M | 2522 | 439 | 3400-4200 | 3230 |
| 33 | N | 2822 | 489 | 3800-4200 | 3490 |

| Load (kg) | Class Fem/ISO | Hoisting motor | | | | | |
|-----------|---------------|-----------------------------------|------------|----------|------|--------|--|
| | | Hoisting speed (m/min): Gear code | | | | | |
| | | 2.5/0.4: E | 3.2/0.5: F | 4/0.7: G | 5: H | 6.3: J | |
| 20000 | 3m/M6 | P6,T6 | P6,T6 | P7,T7 | T8 | T9 | |
| 25000 | 2m/M5 | P6,T6 | P6,T6 | P7,T7 | T8 | T9 | |
| 30000 | 1Am/M4 | P6,T6 | P7,T7 | P8,T8 | T9 | TA | |

Note: minR is minimum rail gauge when service platform is supplied
 Standard rail gauges are 1400, 1700, 2000, 2400, 2700, 3100, 3400
 3800, and 4200 mm
 M3 and weight are calculated at minR

This document is the absolute property of R&M Materials Handling, Inc. This document must not be copied without the written permission of R&M Materials Handling, Inc. The contents thereof must not be disclosed to a third party nor be used for any unauthorized purpose. Contravention will be prosecuted.

| | | | | |
|-----------------------|------------------------|------|-------------|-------------------|
| ETTFAL Design | ETTFAL Chd | Appd | Ref Drawing | QD-M-26 |
| 2002-09-03 Date | TROLLEY; DOUBLE GIRDER | | | 1 of 19 Folder |
| SLEQDCV Owner Dept | MEDIUM, 2x6 ROPE FALLS | | | |
| R&M | D002158-A | | | Issue 6 |