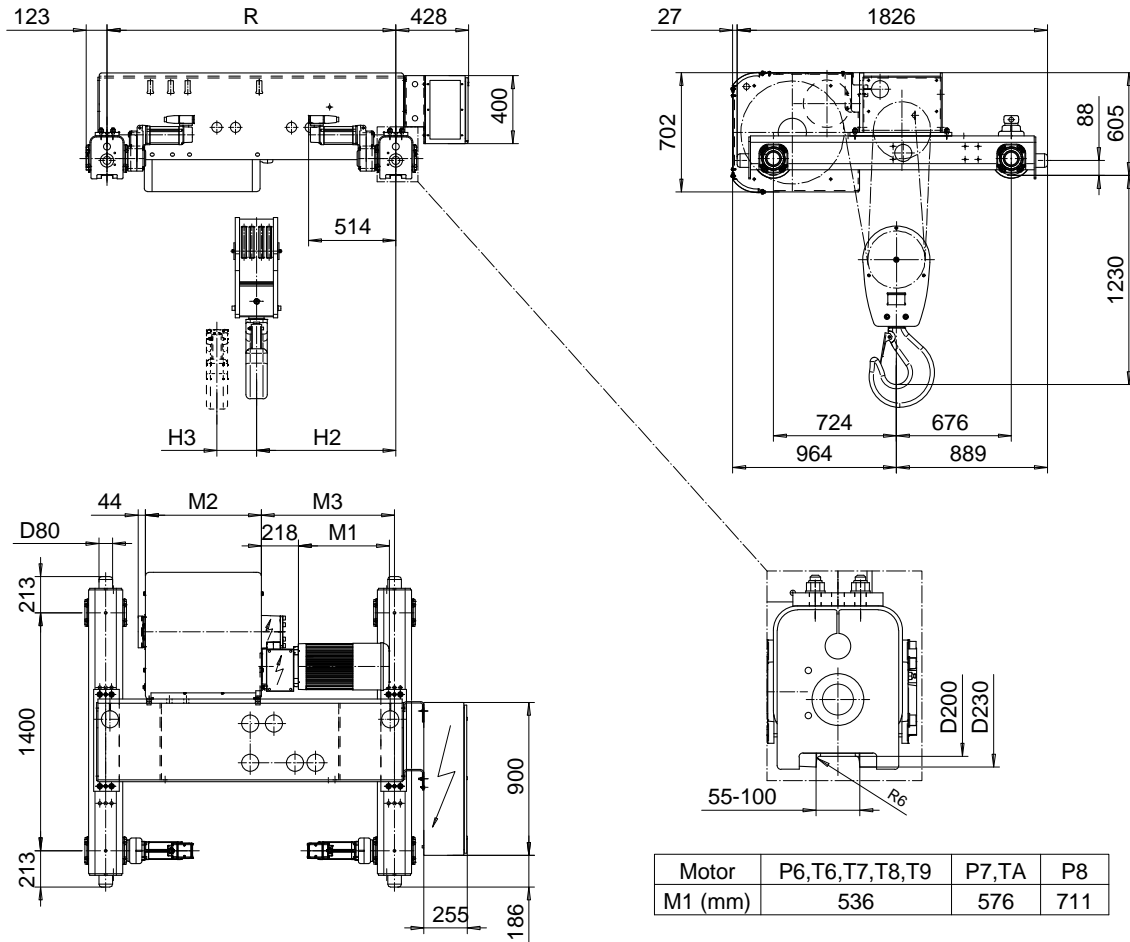


DOUBLE GIRDER, MEDIUM, 8 PART SINGLE

Hoist type:
SX6 081...D0

SI-50Hz



Motor	P6,T6,T7,T8,T9	P7,TA	P8
M1 (mm)	536	576	711

HOL (m)	Length code	M2 (mm)	M3 (mm)	H2 (mm)	H3 (mm)	min R-max R (mm)	Weight (kg)
7	E	682	784	817	63	1700-3100	2280
9	F	832	934	959	81	2000-3800	2400
11.5	G	1022	1144	1145	105	2400-4200	2560
15	H	1272	1480	1497	137	3100-4200	2840
20	J	1622	1544	1582	180	3800-4200	3180
24	K	1922	1970	1989	217	4200	3410

Load (kg)	Class Fem/ISO	Hoisting motor						
		Hoisting speed (m/min): Gear code						
		2/0.3: E	2.5/0.4: F	3.2/0.5: G	3.2: G	4: H	5: J	
32000	2m/M5	P6,T6	P7,T7		T8	T9	TA	
40000	1Am/M4	P6,T6	P7,T7	P8,T8		T9	TA	

Note: minR is minimum rail gauge when service platform is supplied
Standard rail gauges are 1400, 1700, 2000, 2400, 2700, 3100, 3400
3800, and 4200 mm

H2, M3 and weight are calculated at minR

This document is the absolute property of R&M Materials Handling, Inc. This document must not be copied without the written permission of R&M Materials Handling, Inc. The contents thereof must not be disclosed to a third party nor be used for any unauthorized purpose. Contravention will be prosecuted.

ETFPAL Design	ETFPAL Chd	Appd	Ref Drawing	QD-M-08
2002-09-02 Date	TROLLEY; DOUBLE GIRDER			1 of 19 Folder
SLEQDOCV Owner Dept	MEDIUM, 8 ROPE FALLS			
R&M MATERIALS HANDLING, INC. STEEL & CRANE PRODUCTS SHEPHERD, OHIO	D002149-A			Issue 6