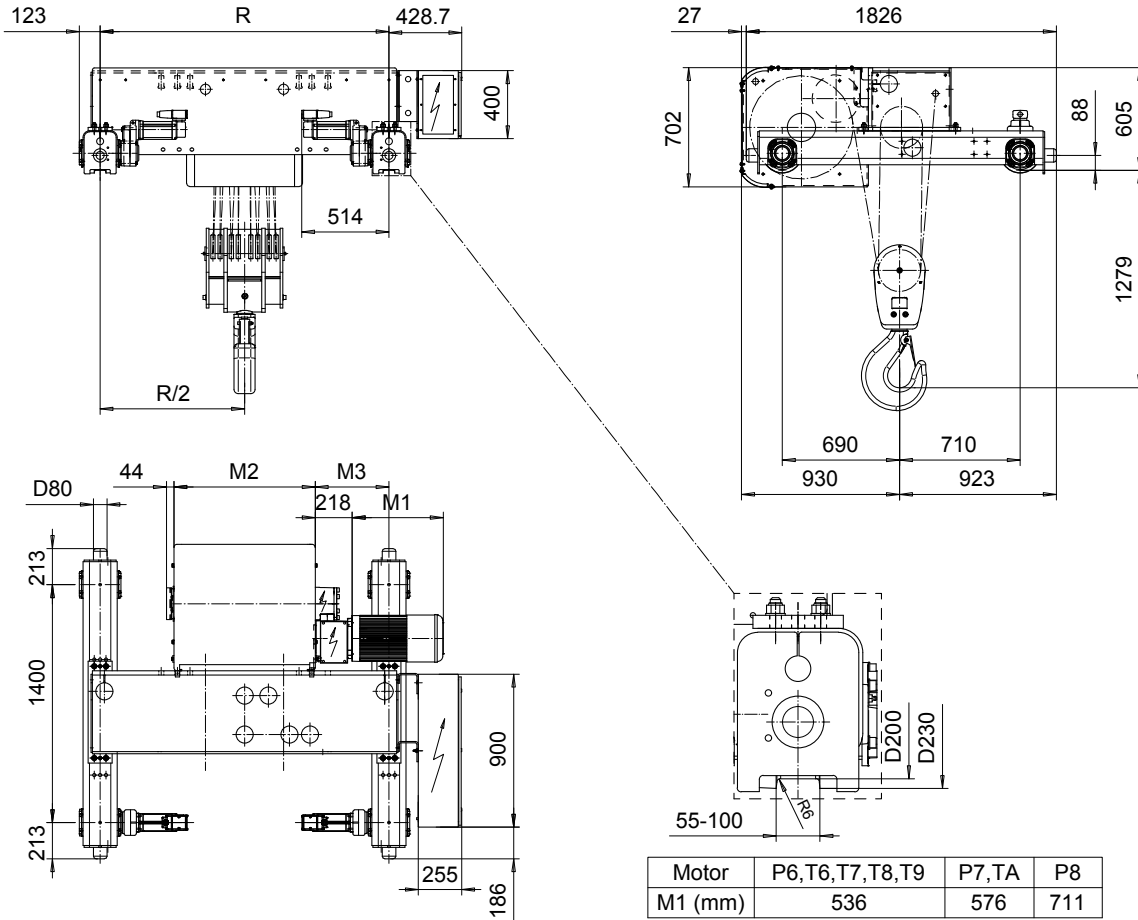


DOUBLE GIRDER, MEDIUM, 8 PART DOUBLE
Hoist type:
SX6 082...D0

SI-50Hz



HOL (m)	Length code	M2 (mm)	M3 (mm)	min R-max R (mm)	Weight (kg)
5.5	F	832	434	1700-2400	2190
7	G	1022	489	2000-2700	2250
9.5	H	1272	364	2000-3100	2410
13	J	1622	389	2400-3400	2610
15.5	K	1922	389	2700-4200	2840
19	L	2272	414	3100-4200	3070
21.5	M	2522	439	3400-4200	3250
24.5	N	2822	489	3800-4200	3510

Load (kg)	Class Fem/IS	Hoisting motor					
		Hoisting speed (m/min): Gear code					
		2/0.3: E	2.5/0.4: F	3.2/0.5: G	3.2: G	4: H	5: J
32000	2m/M5	P6,T6	P7,T7	---	T8	T9	TA
40000	1Am/M4	P6,T6	P7,T7	P8	T8	T9	TA

Note: minR is minimum rail gauge when service platform is supplied
 Standard rail gauges are 1400, 1700, 2000, 2400, 2700, 3100, 3400
 3800, and 4200 mm
 M3 and weight are calculated at minR

This document is the absolute property of R&M Materials Handling, Inc. This document must not be copied without the written permission of R&M Materials Handling, Inc. The contents thereof must not be disclosed to a third party nor be used for any unauthorized purpose. Contravention will be prosecuted.

ETFPAL Design 2002-09-03 Date	ETFPAL Chd	Appd	Ref Drawing	QD-M-28
SLEQDCV Owner Dept	TROLLEY; DOUBLE GIRDER MEDIUM, 2X8 ROPE FALLS			1 of 19 Folder
R&M R&M MATERIALS HANDLING, INC. HOIST & CRANE PRODUCTS INTERNATIONAL, LLC	D002160-A			Issue 6