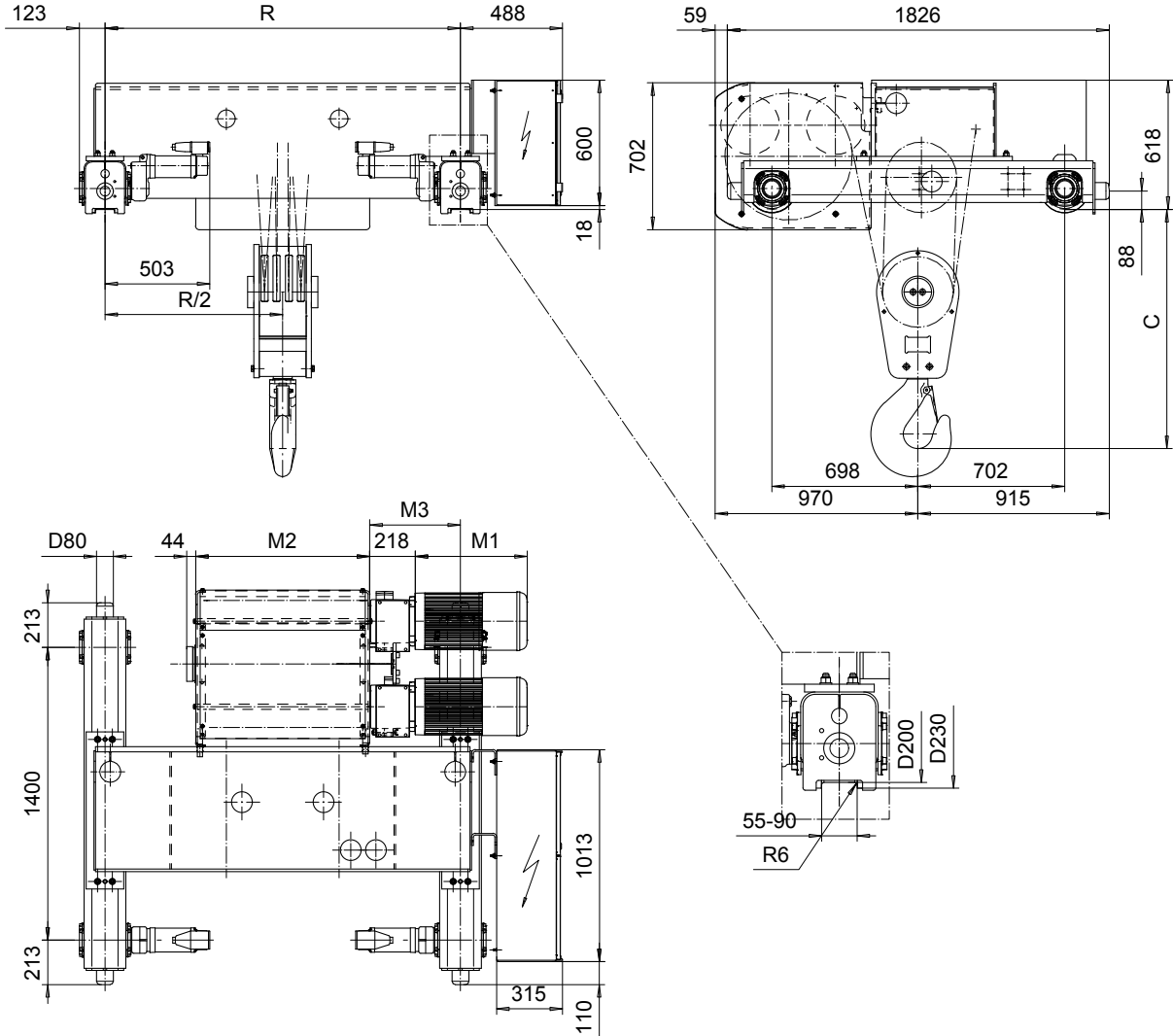


DOUBLE GIRDER, MEDIUM, 4 PART DOUBLE
Hoist type:
SX7 042...D0

SI-50Hz



Motor	P6,T6,T7	P7
M1 (mm)	536	576

Load (kg)	Class Fem/ISO	Hoisting motor				
		Hoisting speed (m/min): Gear code				
		4/0,6: E	5/0,8: F	6,3/1: G	8: H	10: J
25000	3m/M6	P6,T6	P6,T6	P7,T7	T8	T9
32000	2m/M5	P6,T6	P6,T6	P7,T7	T8	T9
40000	1Am/M4	P6,T6	P7,T7	T8	T9	-

HOL (m)	Length code	C (mm)	M2 (mm)	M3 (mm)	min R-max R (mm)	Weight (kg)
7.5	F	1440	832	434	1700-2000	2300
10	G	1440	1022	339	2000-2400	2400
13.5	H	1440	1272	364	2000-2700	2600
18.5	J	1554	1622	389	2400-3100	2850
23	K	1554	1922	389	2700-3400	3100
27.5	L	1554	2272	414	3100-3800	3400
31	M	1554	2522	439	3400-4200	3650
35.5	N	1554	2822	489	3800-4200	3950

Note: minR is minimum rail gauge when service platform is supplied
 Standard rail gauges are 1400, 1700, 2000, 2400, 2700, 3100, 3400
 3800, and 4200 mm
 M3 and weight are calculated at minR

This document is the absolute property of R&M Materials Handling, Inc. This document must not be copied without the written permission of R&M Materials Handling, Inc. The contents thereof must not be disclosed to a third party nor be used for any unauthorized purpose. Contravention will be prosecuted.

ETFPAL	ETFPAL	Appd	Ref Drawing	QE-M-24
Design	2003-01-13	TROLLEY; DOUBLE GIRDER		
Date		MEDIUM, 2X4 ROPE FALLS		
SLEQDCV	Owner Dept	1 of 15		
R&M	S&M MATERIALS HANDLING, INC.	Folder		
	HOIST & CRANE PRODUCTS	D002334-A		
	BRIDGEWORK, LLC	Issue		
		6		