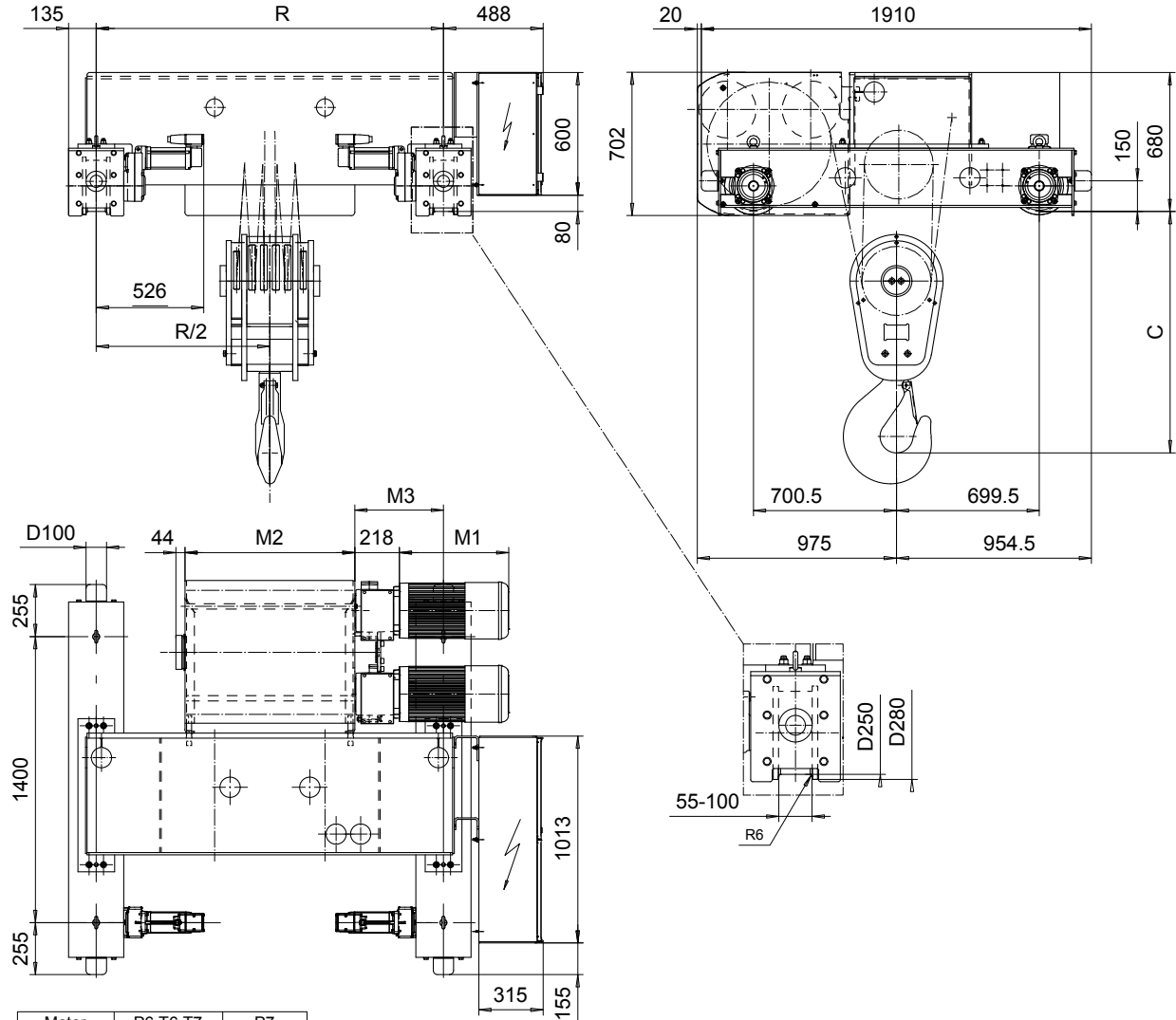


**DOUBLE GIRDER, MEDIUM, 6 PART DOUBLE**  
**Hoist type:**  
**SX7 062...D0**

SI-50Hz



Motor	P6,T6,T7	P7
M1 (mm)	536	576

HOL (m)	Length code	C (mm)	M2 (mm)	M3 (mm)	min R-max R (mm)	Weight (kg)
5	F	1516	832	434	1700-2000	2800
6.5	G	1516	1022	339	2000-2400	2900
9	H	1516	1272	364	2000-2700	3200
12.5	J	1570	1622	389	2400-3100	3450
15	K	1570	1922	389	2700-3400	3750
18.5	L	1624	2272	414	3100-3800	4050
20.5	M	1624	2522	439	3400-4200	4300
23.5	N	1624	2822	489	3800-4200	4550

Load (kg)	Class	Hoisting motor				
		Hoisting speed (m/min): Gear code				
	Fem/ISO	2.5/0.4: E	3.2/0.5: F	4/0.6: G	5: H	6.3: J
40000	3m/M6	P6,T6	P6,T6	P7,T7	T8	T9
50000	2m/M5	P6,T6	P6,T6	P7,T7	T8	T9
60000	1Am/M4	P6,T6	P7,T7	T8	T9	-

Note: minR is minimum rail gauge when service platform is supplied  
 Standard rail gauges are 1400, 1700, 2000, 2400, 2700, 3100, 3400  
 3800, and 4200 mm  
 M3 and weight are calculated at minR

This document is the absolute property of R&M Materials Handling, Inc. This document must not be copied without the written permission of R&M Materials Handling, Inc. The contents thereof must not be disclosed to a third party nor be used for any unauthorized purpose. Contravention will be prosecuted.

ETFPAL Design 2003-01-13 Date	ETFPAL Ctd	Appd	Ref Drawing	QE-M-26
SLEQDCV Owner Dept	TROLLEY; DOUBLE GIRDER MEDIUM, 2X6 ROPE FALLS			1 of 15 Folder
R&M MATERIALS HANDLING, INC. HOIST & CRANE PRODUCTS SERRAVALLO, OHIO	D002336-A			Issue 7