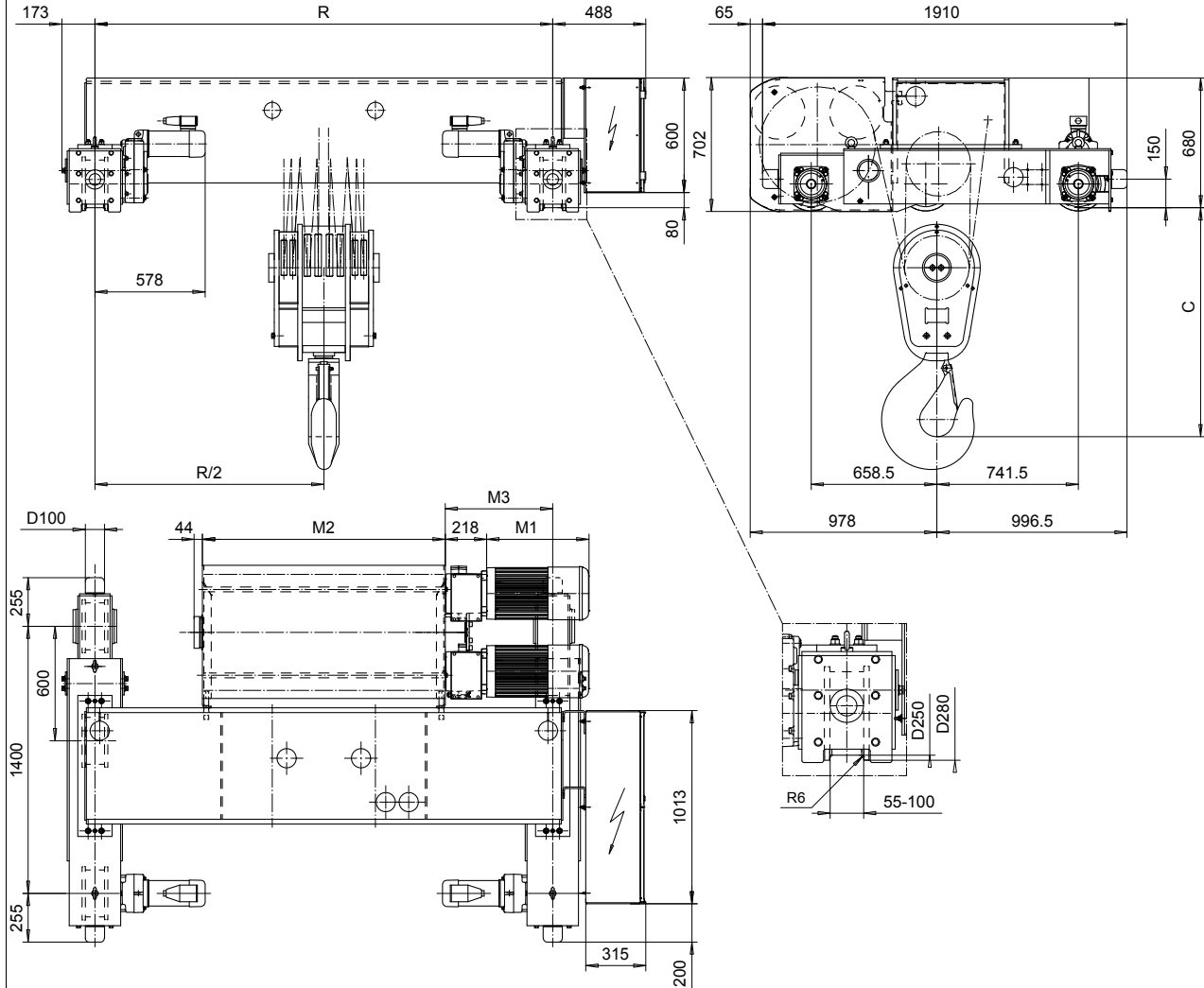


DOUBLE GIRDER, MEDIUM, 8 PART DOUBLE

Hoist type:

SX7 082...D0

SI-50Hz



Motor	P6,T6,T7	P7
M1 (mm)	536	576

Load (kg)	Class	Hoisting motor				
		Hoisting speed (m/min): Gear code				
	Fem/ISO	2/0.3: E	2.5/0.4: F	3.2/0.5: G	4: H	5: J
63000	2m/M5	P6,T6	P6,T6	P7,T7	T8	T9
80000	1Am/M4	P6,T6	P7,T7	T8	T9	-

HOL (m)	Length code	C (mm)	M2 (mm)	M3 (mm)	min R-max R (mm)	Weight (kg)
6.5	H	1519	1272	564	2400-2700	3650
9	J	1519	1622	389	2400-3100	4000
11	K	1519	1922	389	2700-3400	4300
13.5	L	1774	2272	414	3100-3800	4650
15.5	M	1774	2522	439	3400-4200	4950
17.5	N	1774	2822	489	3800-4200	5300

Note: minR is minimum rail gauge when service platform is supplied
 Standard rail gauges are 1400, 1700, 2000, 2400, 2700, 3100, 3400
 3800, and 4200 mm

M3 and weight are calculated at minR

This document is the absolute property of R&M Materials Handling, Inc. This document must not be copied without the written permission of R&M Materials Handling, Inc. The contents thereof must not be disclosed to a third party nor be used for any unauthorized purpose. Contravention will be prosecuted.

ETFPAL Design	ETFPAL Chd	Appd	Ref Drawing	QE-M-28
2003-01-13 Date	TROLLEY; DOUBLE GIRDER			
SLEQDOCV Owner Dept	MEDIUM, 2X8 ROPE FALLS			
	R&M MATERIALS HANDLING, INC. HOIST & GEAR PRODUCTS SPRINGFIELD, OHIO			Issue
	D002338-A			6