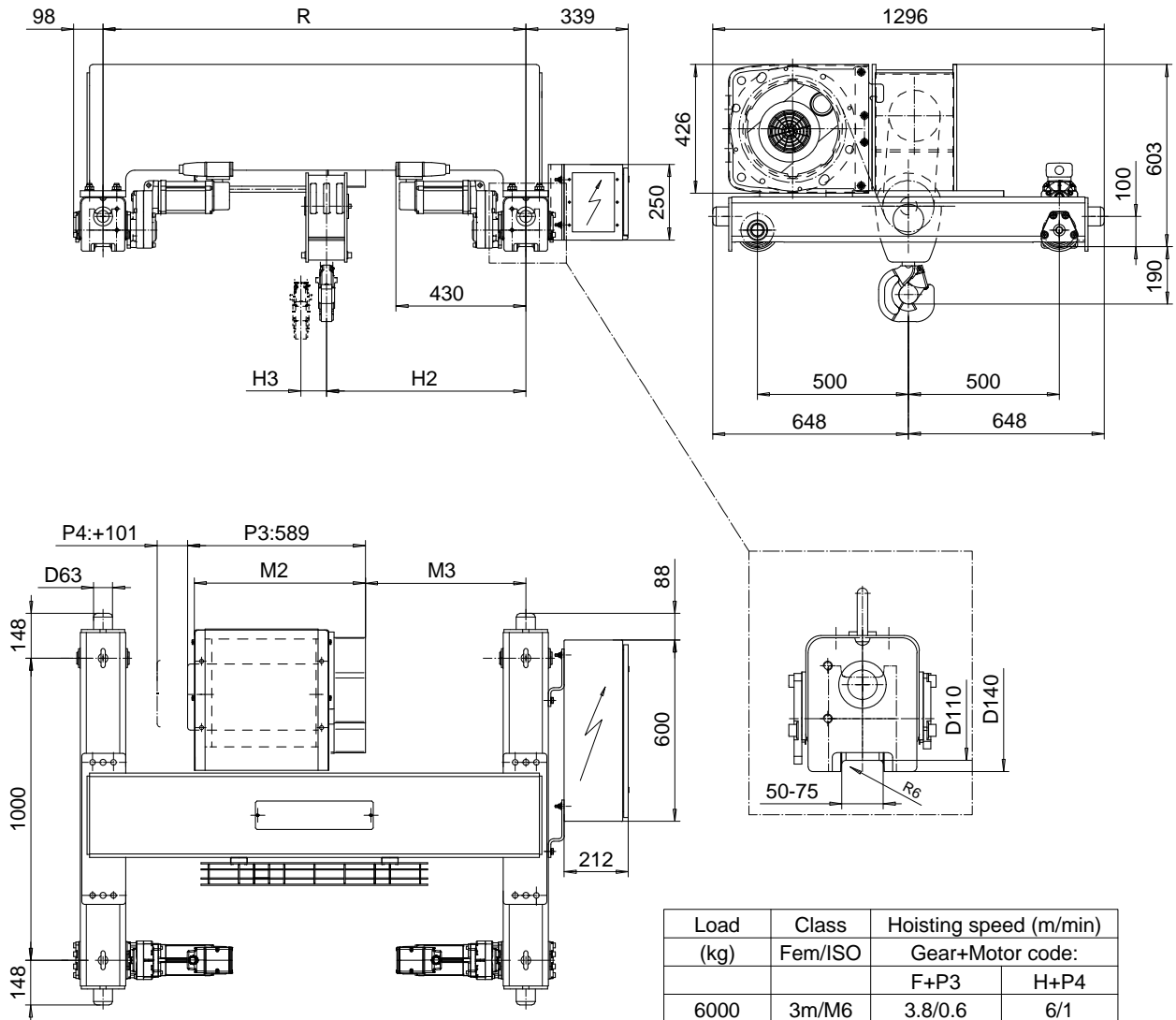


DOUBLE GIRDER, HIGH CONNECTION, 6 PART SINGLE

Hoist type:

SX4 061...DH

SI-60Hz



Load (kg)	Class Fem/ISO	Hoisting speed (m/min)	
		Gear+Motor code:	
		F+P3	H+P4
6000	3m/M6	3.8/0.6	6/1
7500	2m/M5	3.8/0.6	6/1
+ weight (kg):		-	20

HOL (m)	Length code	M2 (mm)	M3 (mm)	H2 (mm)	H3 (mm)	min R (mm)	Weight (kg)
6	C	567	431	560	49	1200	555
8	D	667	431	560	65	1200	565
10	E	787	531	660	85	1400	595

Note: minR is minimum rail gauge when second brake is supplied
Standard rail gauges are 900, 1200, 1400, 1700, and 2000 mm

This document is the absolute property of R&M Materials Handling, Inc. This document must not be copied without the written permission of R&M Materials Handling, Inc. The contents thereof must not be disclosed to a third party nor be used for any unauthorized purpose. Contravention will be prosecuted.

ETTATA	ETTFAL	Appd	Ref Drawing	QB-H-06
Design	Chd			
2002-10-11	TROLLEY; DOUBLE GIRDER			1:10 Folder
Date	HIGH, 6 ROPE FALLS			
SLEQDOCV				Issue
Owner Dept				5
R&M	R&M MATERIALS HANDLING, INC. STEEL & CRANE PRODUCTS SHELDONVILLE, OHIO			
	D002236-A			