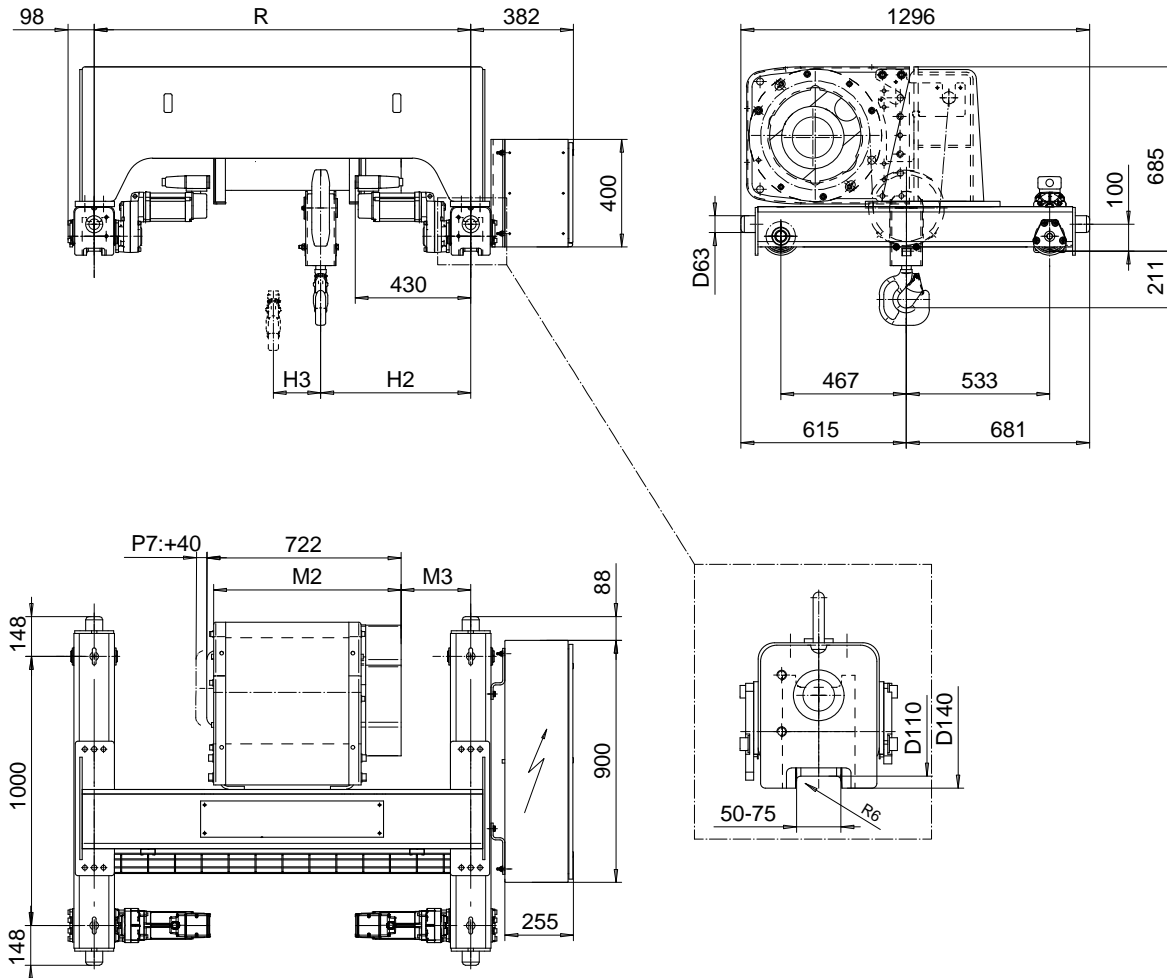


DOUBLE GIRDER, HIGH CONNECTION, 2 PART SINGLE
Hoist type:
SX5 021...DH

SI-60Hz



Load (kg)	Class Fem/ISO	Hoisting speed (m/min)			
		Gear+Motor code:			
		E+P5	F+P5	H+P6	J+P7
4000	3m/M6	9.5/1.6	12/2	19/3.2	24/4
5000	2m/M5	9.5/1.6	12/2	19/3.2	24/4
+ weight (kg):		-	-	30	40

HOL	Length	M2	M3	H2	H3	min R	Weight
(m)	code	(mm)	(mm)	(mm)	(mm)	(mm)	(kg)
18	D	697	159	458	176	1200	665
24	E	817	159	458	235	1200	690
32	F	967	122	421	309	1200	715
40	G	1157	372	671	403	1700	795

Note: minR is minimum rail gauge when second brake is supplied
 Standard rail gauges are 1200, 1400, 1700, and 2000 mm

This document is the absolute property of R&M Materials Handling, Inc. This document must not be copied without the written permission of R&M Materials Handling, Inc. The contents thereof must not be disclosed to a third party nor be used for any unauthorized purpose. Contravention will be prosecuted.

ETTATA	ETTAV	Appd	Ref Drawing	QC-H-02
Design	Chd			
2002-10-14			TROLLEY; DOUBLE GIRDER	1 of 12 Folder
Date			HIGH, 2 ROPE FALLS	
SLEQDOCV				Issue
Owner Dept				4
R&M	R&M MATERIALS HANDLING, INC.			
	HOIST & CRANE PRODUCTS			
	BRIDGEWORK, INC.			
			D002238-A	