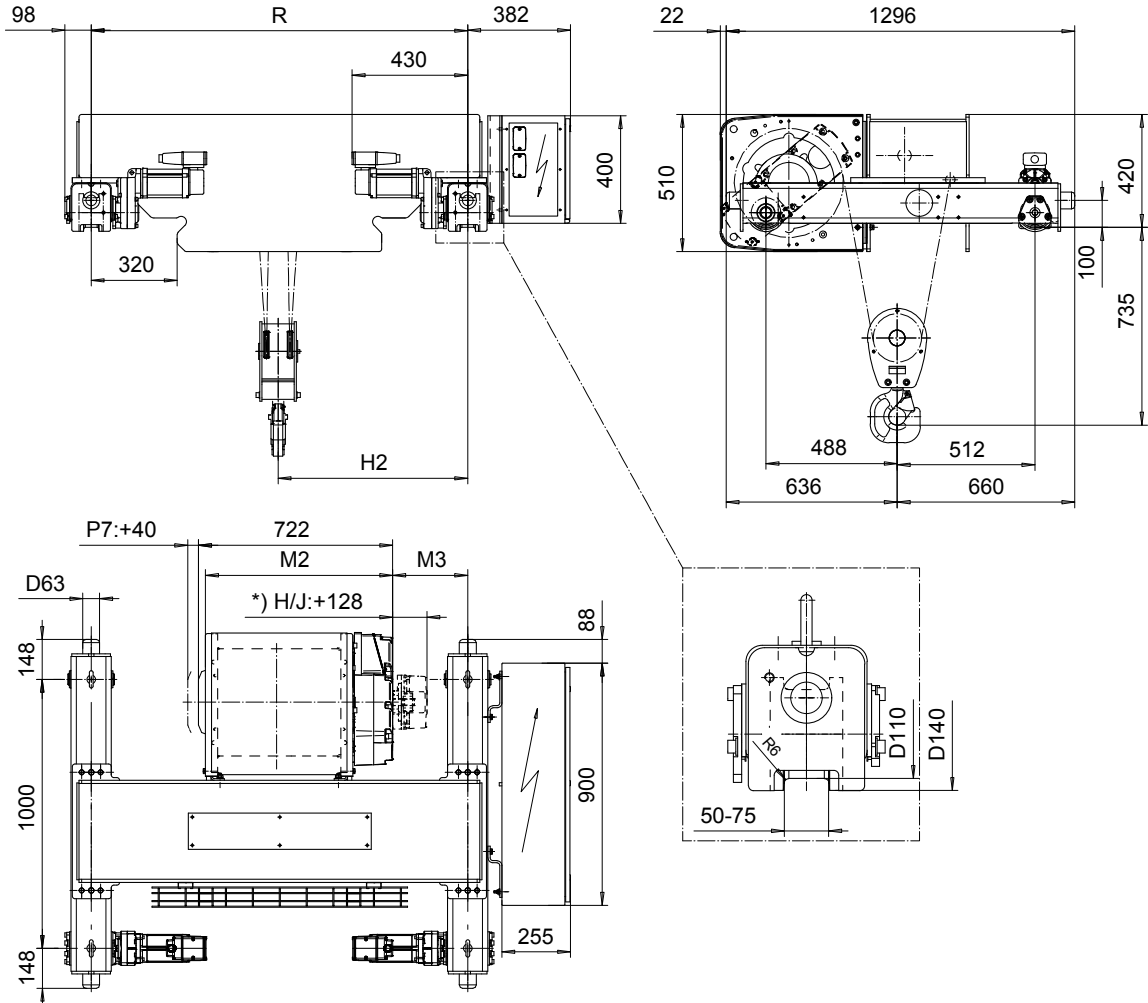


**DOUBLE GIRDER, MEDIUM, 2 PART DOUBLE  
Hoist type:**

**SX5 022...D0**

**SI-60Hz**



| Load<br>(kg)   | Class<br>Fem/ISO | Hoisting speed (m/min) |        |      |
|----------------|------------------|------------------------|--------|------|
|                |                  | Gear+Motor code:       |        |      |
|                |                  | F+P5                   | H+P6   | J+P7 |
| 4000           | 3m/M6            | 12/2                   | 19/3.2 | 24/4 |
| 5000           | 2m/M5            | 12/2                   | 19/3.2 | 24/4 |
| + weight (kg): |                  | -                      | 30     | 40   |

| HOL<br>(m) | Length<br>code | M2<br>(mm) | M3<br>(mm) | H2<br>(mm) | min R<br>(mm) | Weight<br>(kg) |
|------------|----------------|------------|------------|------------|---------------|----------------|
| 8.5        | D              | 697        | 279        | 705        | 1400          | 720            |
| 13         | E              | 817        | 217        | 705        | 1400          | 780            |
| 18         | F              | 967        | 292        | 855        | 1700          | 790            |
| 25         | G              | 1157       | 197        | 855        | 1700          | 850            |
| 33.5       | H              | 1407       | 256        | 1036       | 2000          | 880            |
| 46         | J              | 1757       | 256        | 1211       | 2400          | 985            |

Note: minR is minimum rail gauge when second brake is supplied  
 Primary brake is mounted on gearcase for drum lengths H and J  
 Standard rail gauges are 1400, 1700, 2000, and 2400 mm

This document is the absolute property of R&M Materials Handling, Inc. This document must not be copied without the written permission of R&M Materials Handling, Inc. The contents thereof must not be disclosed to a third party nor be used for any unauthorized purpose. Contravention will be prosecuted.

|   |                        |      |             |                   |
|---|------------------------|------|-------------|-------------------|
| ETFPAL<br>Design  | ETFPAL<br>Chd          | Appd | Ref Drawing | QC-M-22           |
| 2002-08-30<br>Date  | TROLLEY; DOUBLE GIRDER |      |             | 1 of 12<br>Folder |
| SLEQDCV<br>Owner Dept                                     | MEDIUM, 2x2 ROPE FALLS |      |             |                   |
| R&M<br>MATERIALS HANDLING, INC.<br>HOIST & CRANE PRODUCTS | D002134-A              |      |             | Issue<br>4        |