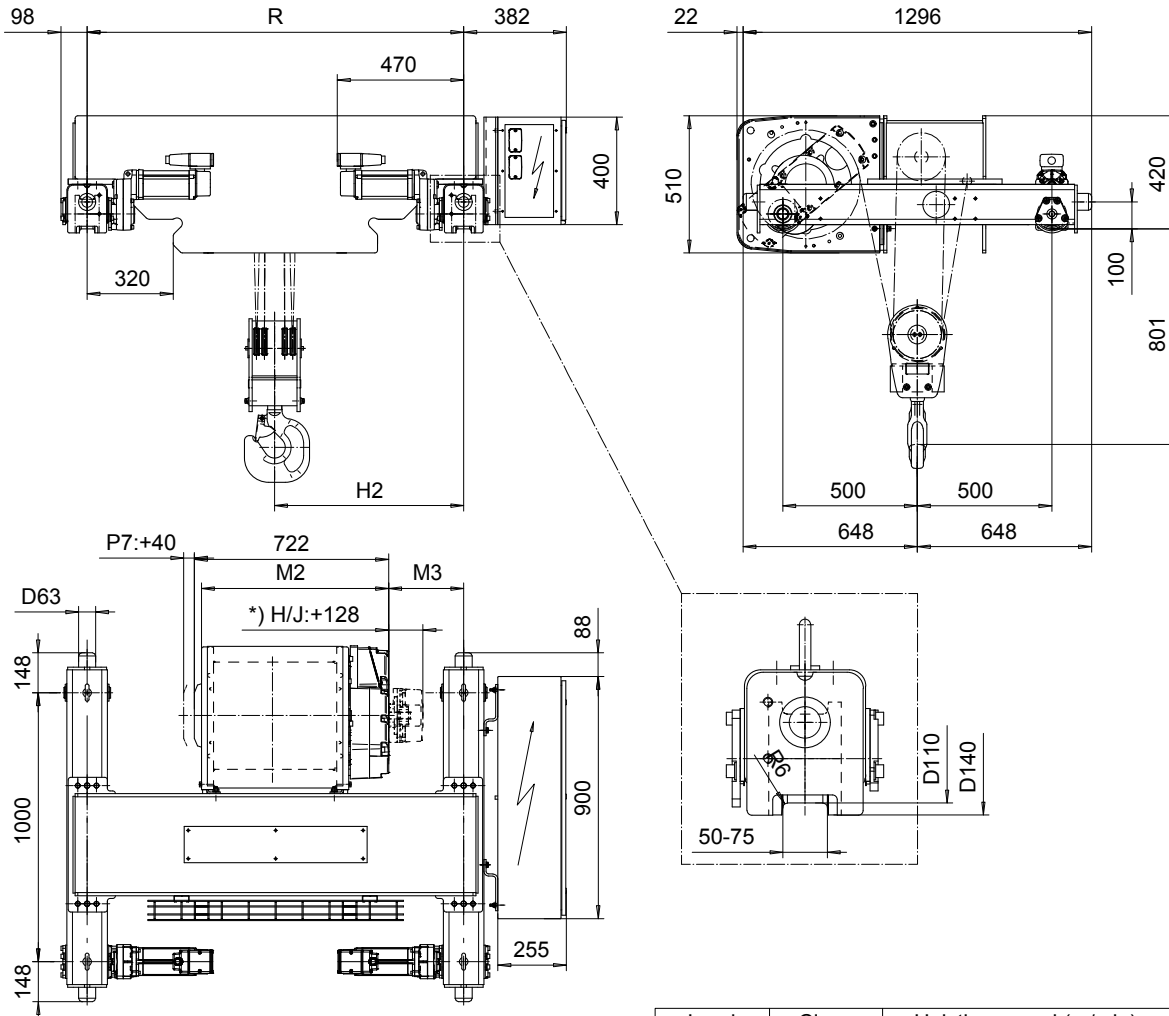


DOUBLE GIRDER, MEDIUM, 4 PART DOUBLE
Hoist type:

SX5 042...D0

SI-60Hz



Load (kg)	Class Fem/ISO	Hoisting speed (m/min)		
		Gear+Motor code:		
		F+P5	H+P6	J+P7
8000	3m/M6	6/1	9.5/1.6	12/2
10000	2m/M5	6/1	9.5/1.6	12/2
+ weight (kg):		-	30	40

HOL (m)	Length code	M2 (mm)	M3 (mm)	H2 (mm)	min R (mm)	Weight (kg)
4	D	697	279	703	1400	780
6.5	E	817	217	705	1400	840
9	F	967	292	853	1700	850
12.5	G	1157	197	855	1700	910
16.5	H	1404	256	1034	2000	940
23	J	1757	256	1209	2400	1045

Note: minR is minimum rail gauge when second brake is supplied
 Primary brake is mounted on gearcase for drum lengths H and J
 Standard rail gauges are 1400, 1700, 2000, and 2400 mm

This document is the absolute property of R&M Materials Handling, Inc. This document must not be copied without the written permission of R&M Materials Handling, Inc. The contents thereof must not be disclosed to a third party nor be used for any unauthorized purpose. Contravention will be prosecuted.

ETFPAL Design 2002-08-30 Date	ETFPAL Chd Appd	Ref Drawing	QC-M-24
SLEQDOCV Owner Dept	TROLLEY; DOUBLE GIRDER MEDIUM, 2x4 ROPE FALLS		1 of 12 Folder
R&M R&M MATERIALS HANDLING, INC. HOIST & CRANE PRODUCTS GREENSBORO, NC	D002135-A		Issue 4