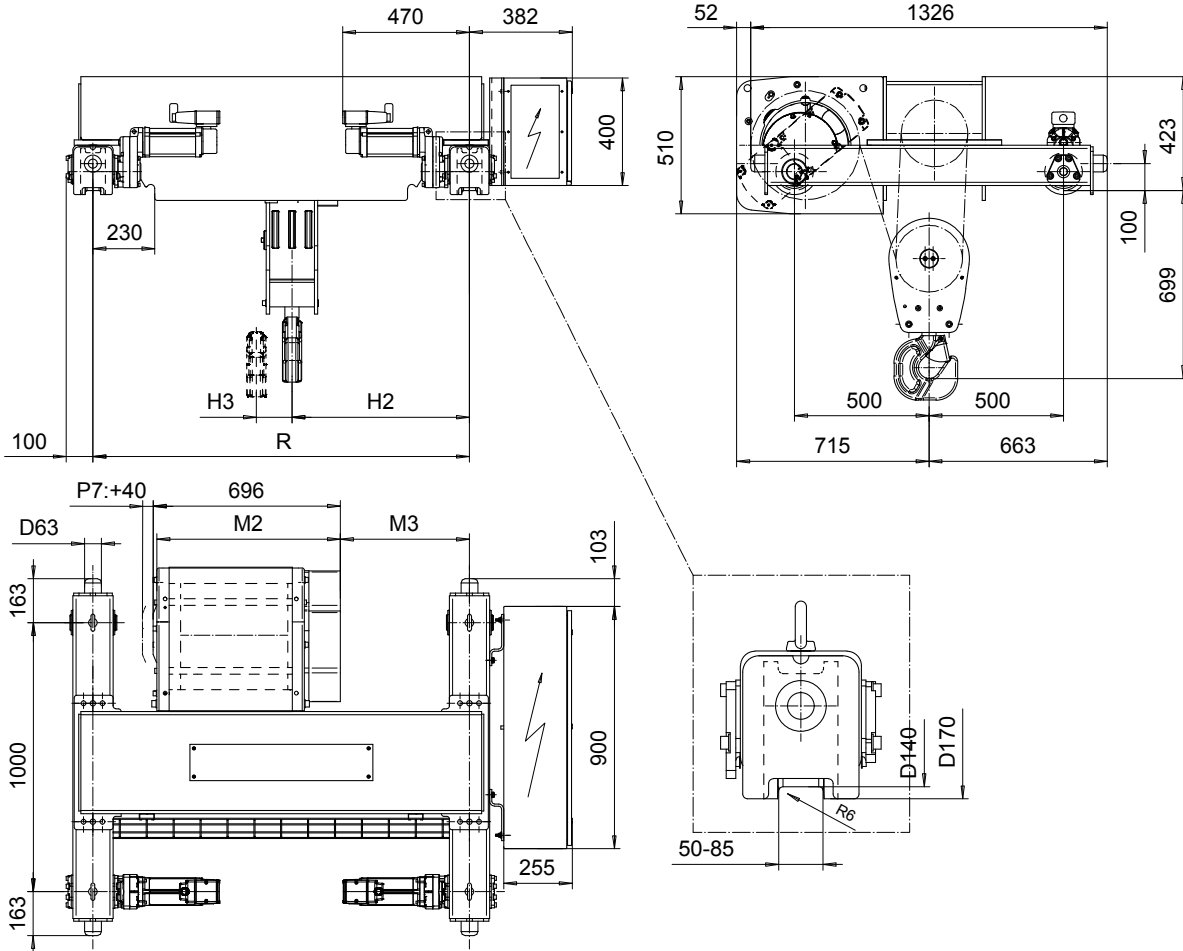


DOUBLE GIRDER, MEDIUM, 6 PART SINGLE
Hoist type:
SX5 061...D0

SI-60Hz



Load (kg)	Class Fem/ISO	Hoisting speed (m/min)		
		Gear+Motor code:		
		F+P5	H+P6	J+P7
12000	3m/M6	3.8/0,6	6/1	7.5/1.3
15000	2m/M5	3.8/0.6	6/1	7.5/1.3
+ weight (kg):		-	30	40

HOL (m)	Length code	M2 (mm)	M3 (mm)	H2 (mm)	H3 (mm)	min R (mm)	Weight (kg)
6	D	682	480	657	53	1400	775
8	E	802	630	807	78	1700	820
10	F	952	770	952	98	2000	855
13	G	1142	970	1152	132	2400	885

Note: minR is minimum rail gauge when second brake is supplied
 Standard rail gauges are 1400, 1700, 2000, and 2400 mm

This document is the absolute property of R&M Materials Handling, Inc. This document must not be copied without the written permission of R&M Materials Handling, Inc. The contents thereof must not be disclosed to a third party nor be used for any unauthorized purpose. Contravention will be prosecuted.

ETFPAL Design	ETFPAL Chd	Appd	Ref Drawing	QC-M-06
2002-08-30 Date	TROLLEY; DOUBLE GIRDER			1 of 12 Folder
SLEQDOCV Owner Dept	MEDIUM, 6 ROPE FALLS			
R&M MATERIALS HANDLING, INC. HOIST & CRANE PRODUCTS	D002124-A			Issue 5