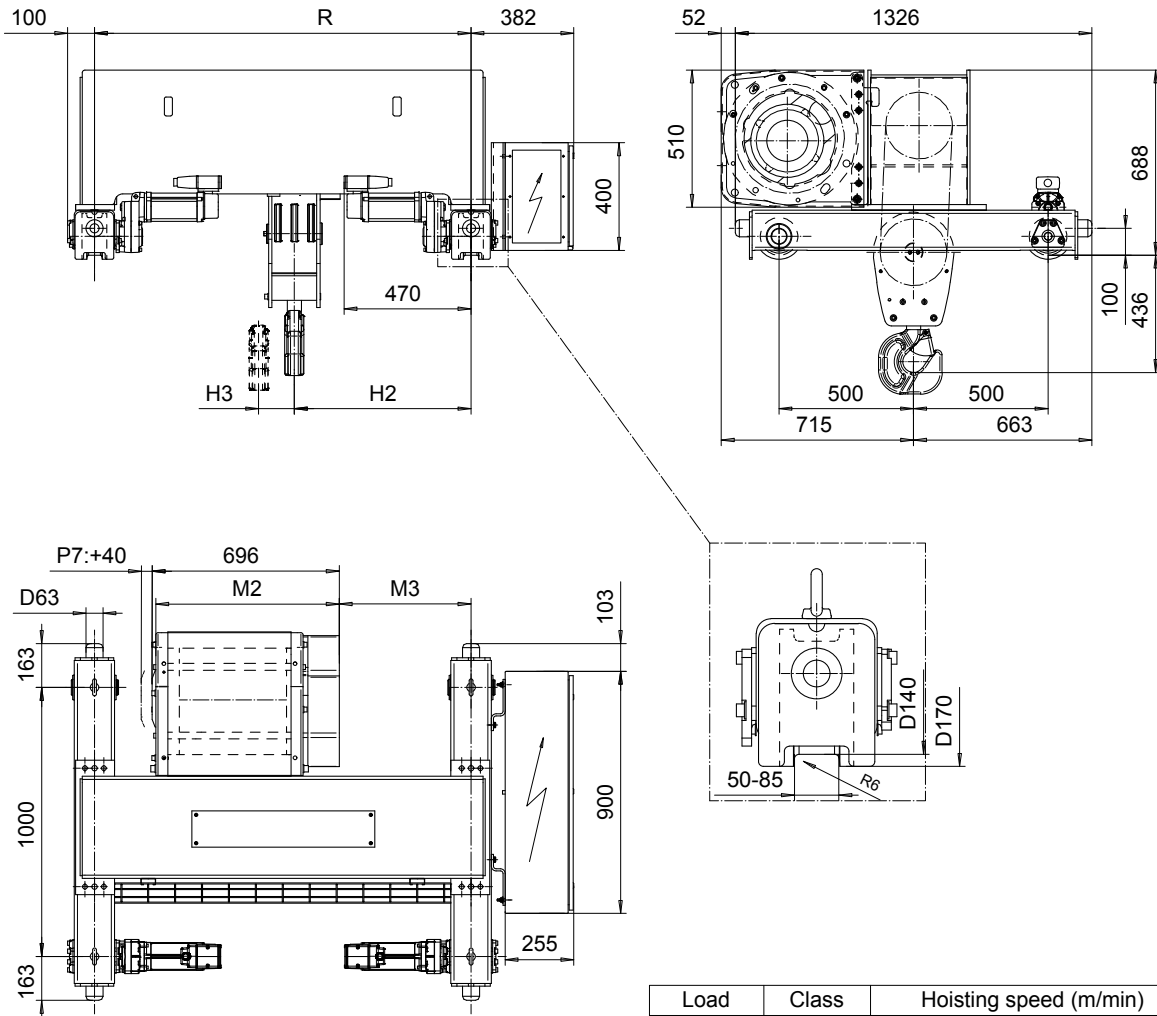


DOUBLE GIRDER, HIGH CONNECTION, 6 PART SINGLE

Hoist type:

SX5 061...DH

SI-60Hz



Load (kg)	Class Fem/ISO	Hoisting speed (m/min)		
		Gear+Motor code:		
		F+P5	H+P6	J+P7
12000	3m/M6	3.8/0.6	6/1	7.5/1.3
15000	2m/M5	3.8/0.6	6/1	7.5/1.3
+ weight (kg):		-	30	40

HOL (m)	Length code	M2 (mm)	M3 (mm)	H2 (mm)	H3 (mm)	min R (mm)	Weight (kg)
6	D	682	390	557	53	1200	825
8	E	802	490	657	78	1400	876
10	F	952	620	802	98	1700	945
13	G	1142	770	952	132	2000	1020

Note: minR is minimum rail gauge when second brake is supplied
Standard rail gauges are 1200, 1400, 1700, 2000, and 2400 mm

This document is the absolute property of R&M Materials Handling, Inc. This document must not be copied without the written permission of R&M Materials Handling, Inc. The contents thereof must not be disclosed to a third party nor be used for any unauthorized purpose. Contravention will be prosecuted.

ETTATA Design	ETTAV Chd	Appd	Ref Drawing	QC-H-06
2002-10-15 Date	TROLLEY; DOUBLE GIRDER			1 of 12 Folder
SLEQDCV Owner Dept	HIGH, 6-ROPE FALLS			
R&M MATERIALS HANDLING, INC. HOIST & CRANE PRODUCTS SHEPPARD AVENUE ANN ARBOR, MI 48106	D002241-A			Issue 5