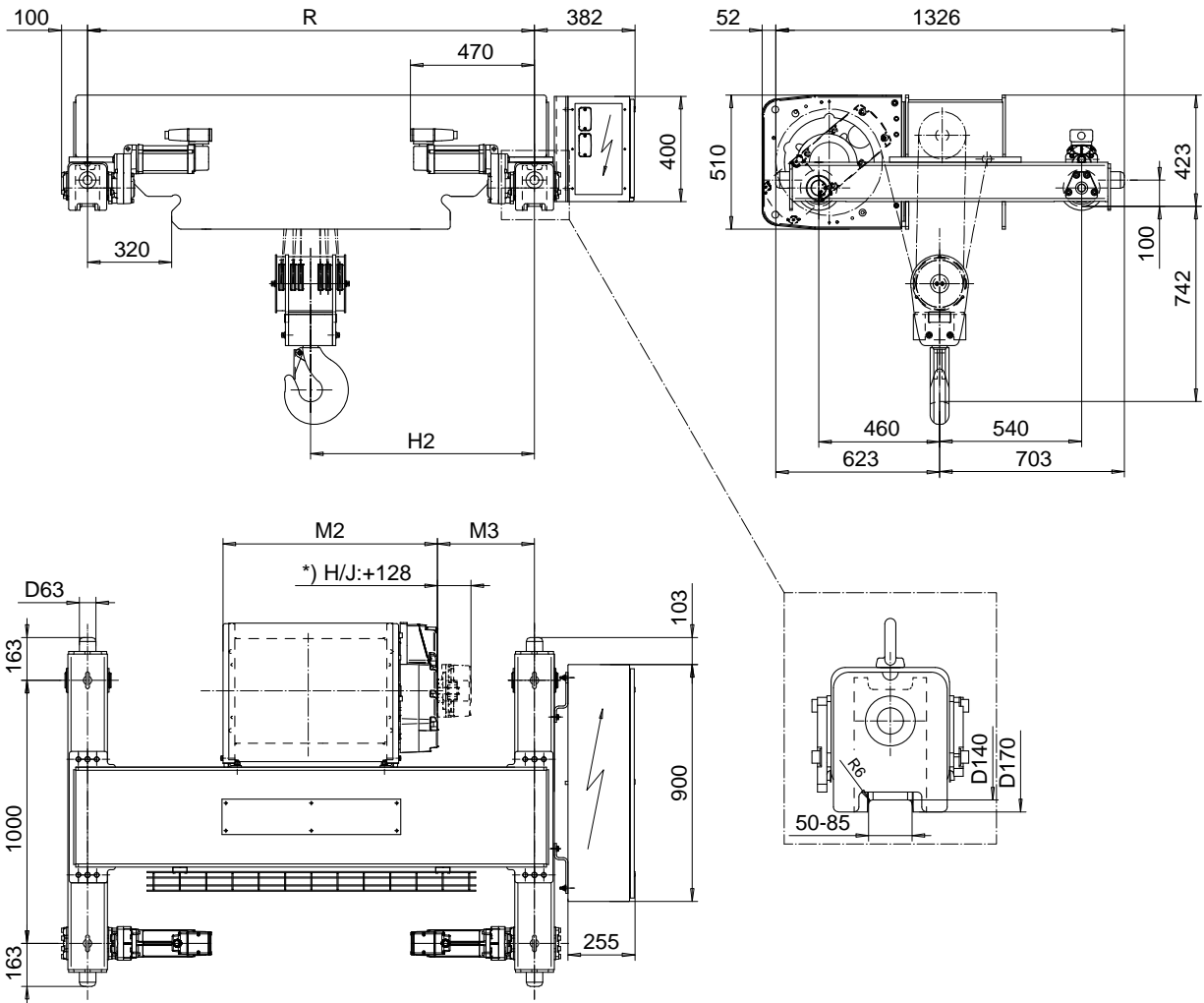


DOUBLE GIRDER, MEDIUM, 6 PART DOUBLE
Hoist type:

SI-60Hz

SX5 062...D0



Load (kg)	Class Fem/ISO	Hoisting speed (m/min)		
		Gear+Motor code:		
		F+P5	H+P6	J+P7
12000	3m/M6	3.8/0.6	6/1	7.5/1.3
15000	2m/M5	3.8/0.6	6/1	7.5/1.3
+ weight (kg):		-	30	40

HOL (m)	Length code	M2 (mm)	M3 (mm)	H2 (mm)	min R (mm)	Weight (kg)
4	E	817	217	705	1400	60
6	F	967	292	852	1700	870
8	G	1157	197	855	1700	930
11	H	1404	256	1033	2000	960
15	J	1757	256	1208	2400	1065

Note: minR is minimum rail gauge when second brake is supplied
 Primary brake is mounted on gearcase for drum lengths H and J
 Standard rail gauges are 1400, 1700, 2000, and 2400 mm

This document is the absolute property of R&M Materials Handling, Inc. This document must not be copied without the written permission of R&M Materials Handling, Inc. The contents thereof must not be disclosed to a third party nor be used for any unauthorized purpose. Contravention will be prosecuted.

ETTPAL Design	ETTPAL Chd	Appd	Ref Drawing	QC-M-26
2002-08-30 Date	TROLLEY; DOUBLE GIRDER MEDIUM, 2x6 ROPE FALLS			1 of 12 Folder
SLEODCV Owner Dept	R&M MATERIALS HANDLING, INC. HOIST & CRANE PRODUCTS SPRINGFIELD, MA			Issue 5
D002132-A				

D002132-A_5

QC-M-26