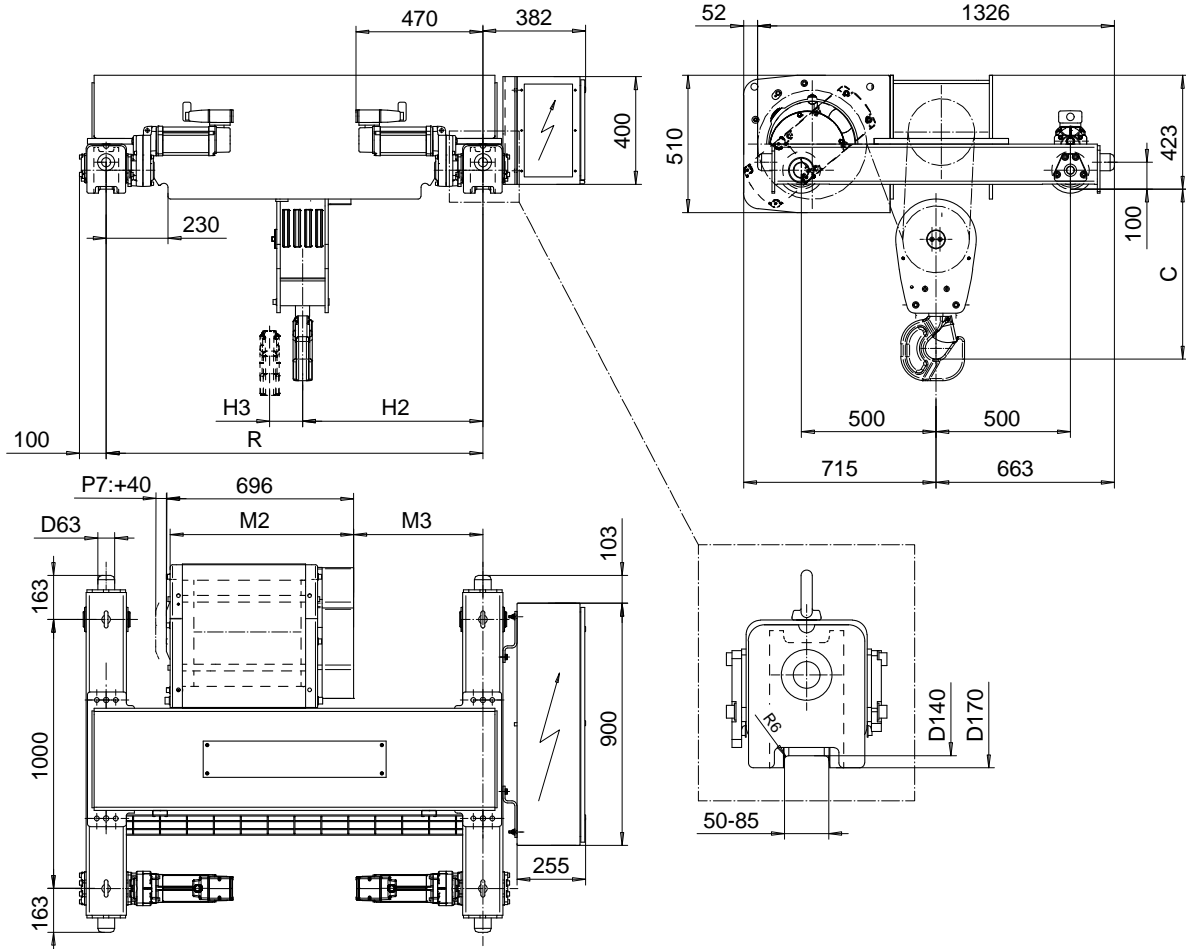


DOUBLE GIRDER, MEDIUM, 8 PART SINGLE

Hoist type:

SX5 081...D0

SI-60Hz



Load (kg)	Class Fem/ISO	Hoisting speed (m/min)		
		Gear+Motor code:		
		F+P5	H+P6	J+P7
16000	2m/M5	3/0.5	4.8/0.8	6/1
20000	1Am/M4	3/0.5	4.8/0.8	6/1
+ weight (kg):		-	30	40

HOL (m)	Length code	M2 (mm)	M3 (mm)	H2 (mm)	H3 (mm)	C (mm)	min R (mm)	Weight (kg)
4.5	D	682	480	668	44	632	1400	780
6	E	802	630	818	53	632	1700	825
8	F	952	770	948	76	682	2000	860
10	G	1142	970	1148	98	682	2400	890

Note: minR is minimum rail gauge when second brake is supplied
Standard rail gauges are 1400, 1700, 2000, and 2400 mm

This document is the absolute property of R&M Materials Handling, Inc. This document must not be copied without the written permission of R&M Materials Handling, Inc. The contents thereof must not be disclosed to a third party nor be used for any unauthorized purpose. Contravention will be prosecuted.

ETFPAL Design	ETFPAL Chd	Appd	Ref Drawing	QC-M-08
2002-08-30 Date	TROLLEY; DOUBLE GIRDER			1 of 12 Folder
SLEQDOCV Owner Dept	MEDIUM, 8 ROPE FALLS			
R&M MATERIALS HANDLING, INC. 5001 S. GARDNER ROAD SPRINGFIELD, OHIO	D002127-A			Issue 5