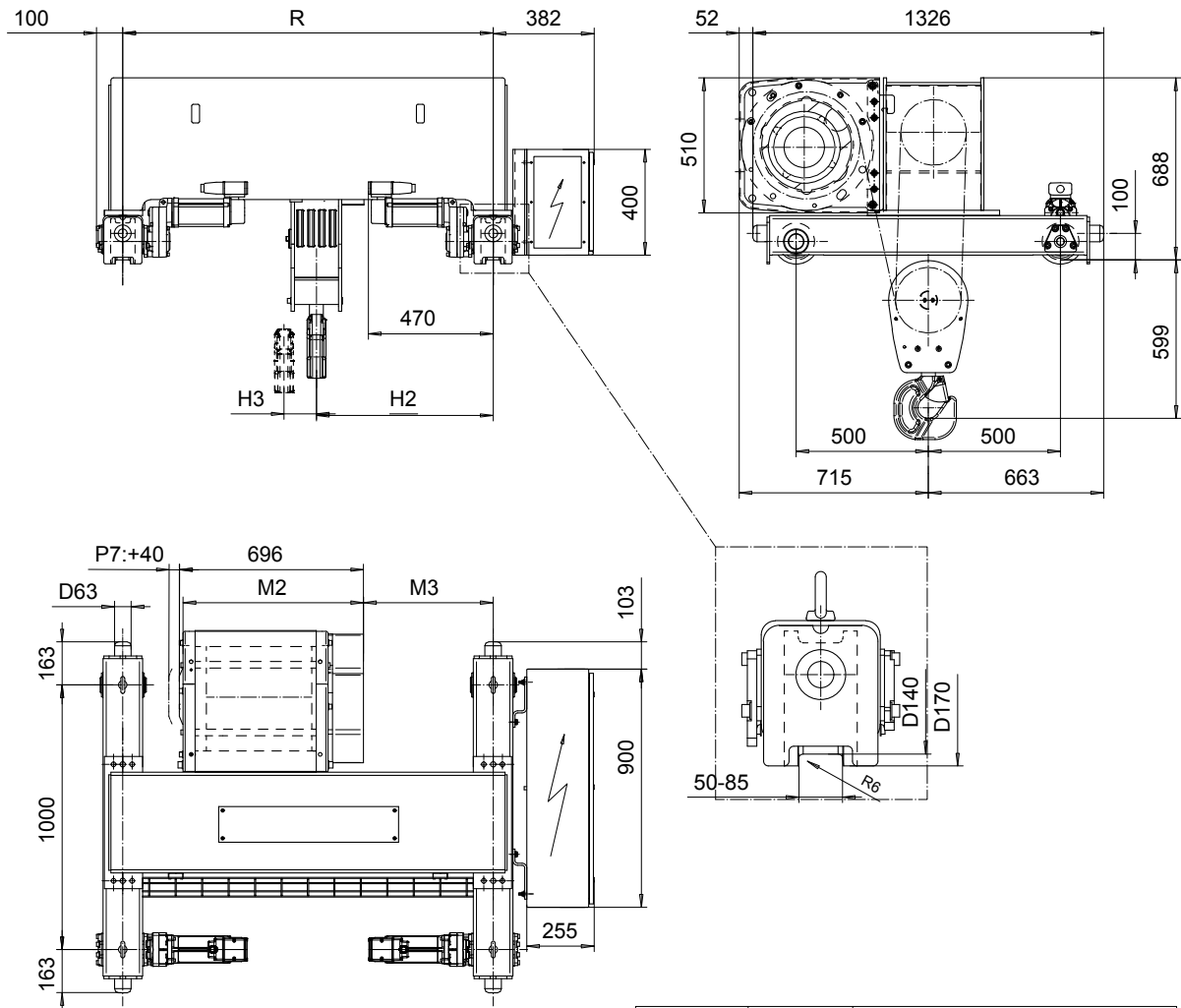


DOUBLE GIRDER, HIGH CONNECTION, 8 PART SINGLE

Hoist type:

SX5 081...DH

SI-60Hz



| Load (kg) | Class Fem/ISO | Hoisting speed (m/min) | | |
|----------------|---------------|------------------------|---------|------|
| | | Gear+Motor code: | | |
| | | F+P5 | H+P6 | J+P7 |
| 16000 | 2m/M5 | 3/0.5 | 4.8/0.8 | 6/1 |
| 20000 | 1Am/M4 | 3/0.5 | 4.8/0.8 | 6/1 |
| + weight (kg): | | - | 30 | 40 |

| HOL (m) | Length code | M2 (mm) | M3 (mm) | H2 (mm) | H3 (mm) | min R (mm) | Weight (kg) |
|---------|-------------|---------|---------|---------|---------|------------|-------------|
| 4.5 | D | 682 | 390 | 568 | 44 | 1200 | 845 |
| 6 | E | 802 | 490 | 668 | 53 | 1400 | 896 |
| 8 | F | 952 | 620 | 798 | 76 | 1700 | 965 |
| 10 | G | 1142 | 770 | 948 | 98 | 2000 | 1040 |

Note: minR is minimum rail gauge when second brake is supplied
Standard rail gauges are 1200, 1400, 1700, 2000, and 2400 mm

This document is the absolute property of R&M Materials Handling, Inc. This document must not be copied without the written permission of R&M Materials Handling, Inc. The contents thereof must not be disclosed to a third party nor be used for any unauthorized purpose. Contravention will be prosecuted.

| | | | | |
|---|------------------------|------|-------------|-------------------|
| ETTATA Design | ETTAV Chd | Appd | Ref Drawing | QC-H-08 |
| 2002-10-16 Date | TROLLEY; DOUBLE GIRDER | | | 1 of 12 Folder |
| SLEQDOCV Owner Dept | HIGH, 8-ROPE FALLS | | | |
| R&M MATERIALS HANDLING, INC. HOIST & CRANE PRODUCTS | D002242-A | | | Issue 5 |