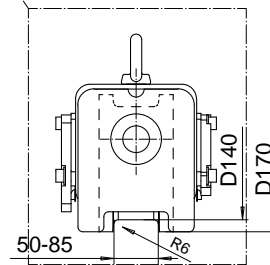
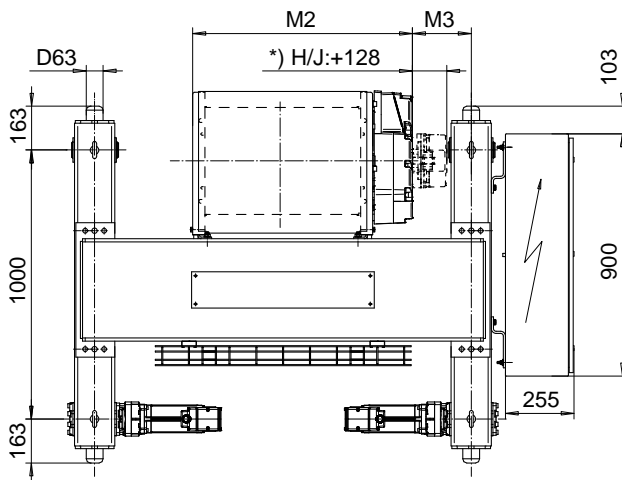
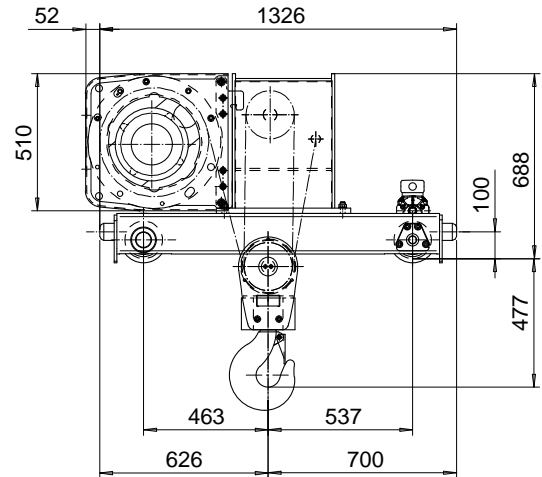
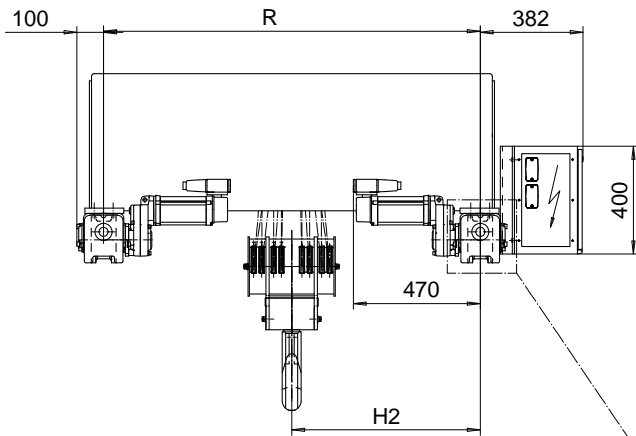


DOUBLE GIRDER, HIGH CONNECTION, 8 PART DOUBLE  
 Hoist type:  
 SX5 082...DH

SI-60Hz



Load (kg)	Class Fem/ISO	Hoisting speed (m/min)		
		Gear+Motor code:		
		F+P5	H+P6	J+P7
16000	2m/M5	3/0.5	4.8/0.8	6/1
20000	1Am/M4	3/0.5	4.8/0.8	6/1
+ weight (kg):		-	30	40

HOL (m)	Length code	M2 (mm)	M3 (mm)	H2 (mm)	min R (mm)	Weight (kg)
4.5	F	967	143	705	1400	940
6	G	1157	197	855	1700	1020
8	H	1407	105	855	1700	1065
11.5	J	1757	256	1211	2400	1230

Note: minR is minimum rail gauge when second brake is supplied  
 Standard rail gauges are 1200, 1400, 1700, 2000, and 2400 mm.  
 The brake is mounted on the gearcase for drum length H and J.

This document is the absolute property of R&M Materials Handling, Inc. This document must not be copied without the written permission of R&M Materials Handling, Inc. The contents thereof must not be disclosed to a third party nor be used for any unauthorized purpose. Contravention will be prosecuted.

ETTATA Design	ETTAV Chd	Appd	Ref Drawing	QC-H-28
2002-10-17 Date	TROLLEY; DOUBLE GIRDER			1 of 12 Folder
SLEQDOCV Owner Dept	HIGH, 2X8 ROPE FALLS			
R&M MATERIALS HANDLING, INC. HOIST & CRANE PRODUCTS SARASOTA, FL 34237	D002246-A			Issue 4