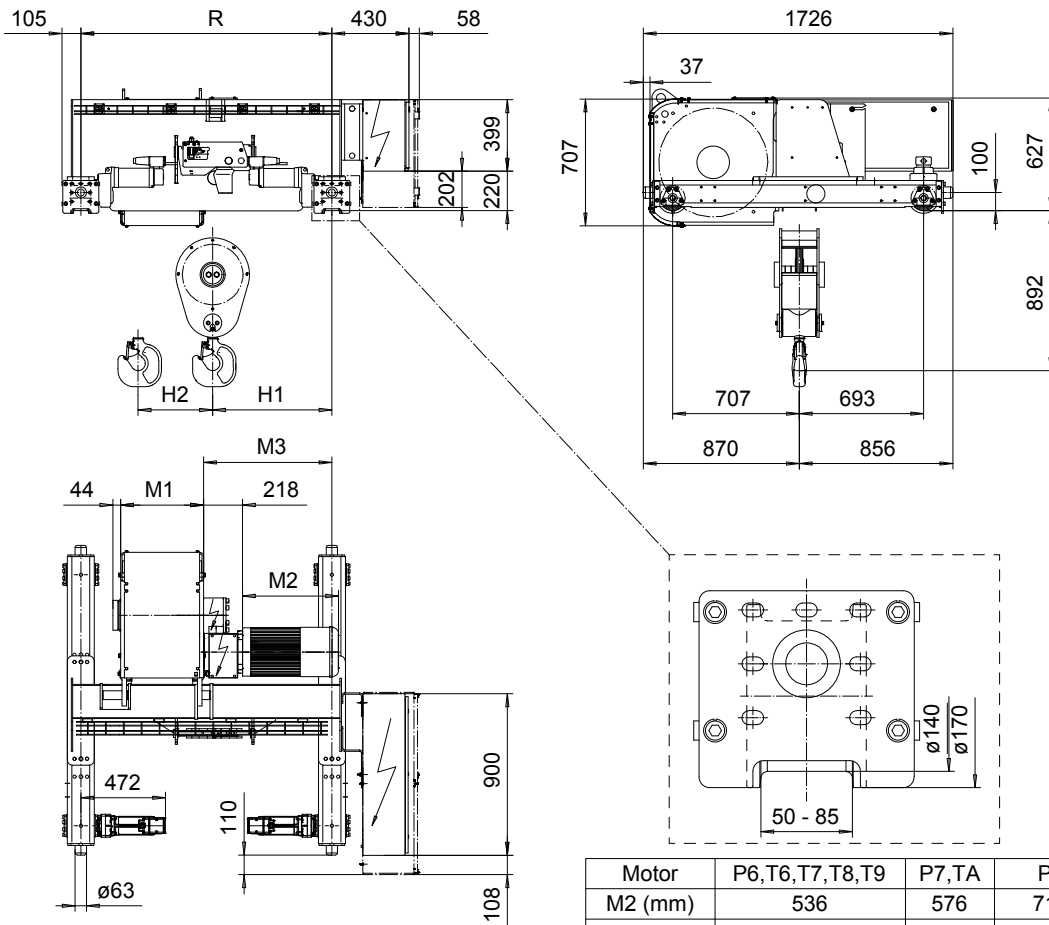


**DOUBLE GIRDER, MEDIUM, 2 PART SINGLE**  
**Hoist type:**  
**SX6 021...D0**

SI-60Hz



Motor	P6,T6,T7,T8,T9	P7,TA	P8
M2 (mm)	536	576	711
Weight (kg)	85	106	106

HOL	Length	M1	M3	H1	H2	min R-max R	Weight*
(m)	code	(mm)	(mm)	(mm)	(mm)	(mm)	(kg)
15.5	C	462	716	665	139	1400	1340
21	D	562	801	750	188	1700	1340
28	E	682	801	750	251	1700-2000	1380
36	F	832	951	950	322	2000-2700	1470
47	G	1022	1151	1100	421	2400-3100	1580
61	H	1272	1471	1420	546	3100-3800	1780
80.5	J	1622	1561	1510	721	3400-4200	1980
97	K	1922	1946	1895	868	4200	2230

Load (kg)	Class Fem/ISO	Hoisting motor				
		Hoisting speed (m/min): Gear code				
		9.5/1.6: E	12/2: F	15/2.5: G	19: H	24: J
6300	3m/M6	P6,T6	P6,T6	P7,T7	T8	T9
8000	2m/M5	P6,T6	P6,T6	P7,T7	T8	T9
10000	1Am/M4	P6,T6	P7,T7	P8,T8	T9	TA

\*Weight calculated with P6 motor.

Note: minR is minimum rail gauge when service platform is supplied  
 Standard rail gauges are 1400, 1700, 2000, 2400, 2700, 3100, 3400  
 3800, and 4200 mm

H2, M3 and weight calculated at minR

This document is the absolute property of R&M Materials Handling, Inc. This document must not be copied without the written permission of R&M Materials Handling, Inc. The contents thereof must not be disclosed to a third party nor be used for any unauthorized purpose. Contravention will be prosecuted.

ETTFAL	ETTFAL	Appd	Ref Drawing	QD-M-02
Design	2002-09-02	TROLLEY; DOUBLE GIRDER		
Date	MEDIUM, 2 ROPE FALLS			1 of 18
SLEQDCV	Folder			Issue
Owner Dept	D006647-A			0