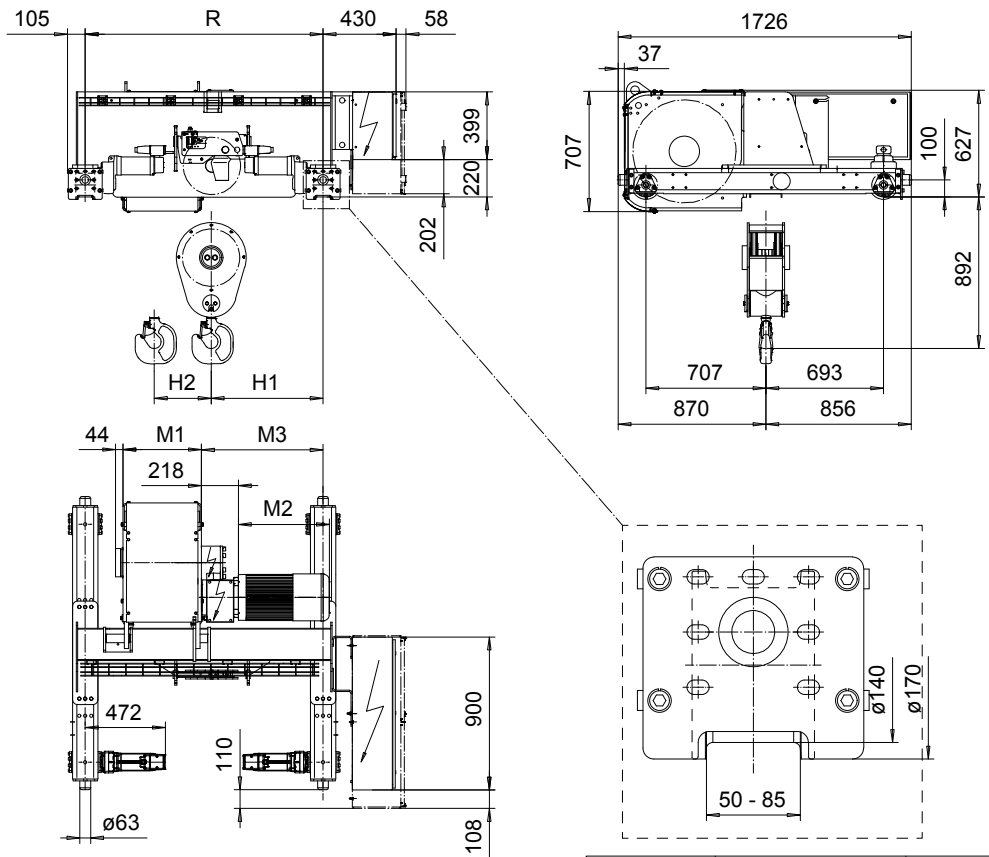


DOUBLE GIRDER, MEDIUM, 4 PART SINGLE
Hoist type:
SX6 041...D0

SI-60Hz



| | | | |
|-------------|----------------|-------|-----|
| Motor | P6,T6,T7,T8,T9 | P7,TA | P8 |
| M2 (mm) | 536 | 576 | 711 |
| Weight (kg) | 85 | 106 | 106 |

| HOL | Length | M1 | M3 | H1 | H2 | min R-max R | Weight* |
|------|--------|------|------|------|------|-------------|---------|
| (m) | code | (mm) | (mm) | (mm) | (mm) | (mm) | (kg) |
| 7.5 | C | 462 | 716 | 659 | 69 | 1400 | 1380 |
| 10.5 | D | 562 | 801 | 744 | 94 | 1700 | 1380 |
| 14 | E | 682 | 801 | 744 | 125 | 1700-2000 | 1430 |
| 18 | F | 832 | 951 | 894 | 161 | 2000-2700 | 1510 |
| 23.5 | G | 1022 | 1151 | 1094 | 210 | 2400-3100 | 1620 |
| 30.5 | H | 1272 | 1471 | 1414 | 273 | 3100-3800 | 1820 |
| 40 | J | 1622 | 1561 | 1504 | 360 | 3400-4200 | 2030 |
| 48.5 | K | 1922 | 1946 | 1889 | 434 | 4200 | 2270 |

| Load | Class | Hoisting motor | | | | |
|-------|---------|-----------------------------------|--------|------------|-------|-------|
| | | Hoisting speed (m/min): Gear code | | | | |
| (kg) | Fem/ISO | 4.8/0.7: E | 6/1: F | 7.5/1.3: G | 9.5 H | 12: J |
| 12500 | 3m/M6 | P6,T6 | P6,T6 | P7,T7 | T8 | T9 |
| 16000 | 2m/M5 | P6,T6 | P6,T6 | P7,T7 | T8 | T9 |
| 20000 | 1Am/M4 | P6,T6 | P7,T7 | P8,T8 | T9 | TA |

*Weight calculated with P6 motor.

Note: minR is minimum rail gauge when service platform is supplied
 Standard rail gauges are 1400, 1700, 2000, 2400, 2700, 3100, 3400
 3800, and 4200 mm
 H2, M3 and weight are calculated at minR

This document is the absolute property of R&M Materials Handling, Inc. This document must not be copied without the written permission of R&M Materials Handling, Inc. The contents thereof must not be disclosed to a third party nor be used for any unauthorized purpose. Contravention will be prosecuted.

| | | | | |
|------------|--------|------|------------------------|-------------------|
| ETFPAL | ETFPAL | Appd | Ref Drawing | QD-M-04 |
| Design | Chd | | | |
| 2002-09-02 | | | TROLLEY; DOUBLE GIRDER | 1 of 19 Folder |
| Date | | | MEDIUM, 4 ROPE FALLS | |
| SLEQDCV | | | | |
| Owner Dept | | | | |
| R&M | | | | |
| | | | | |
| | | | D006648-A | Issue 0 |