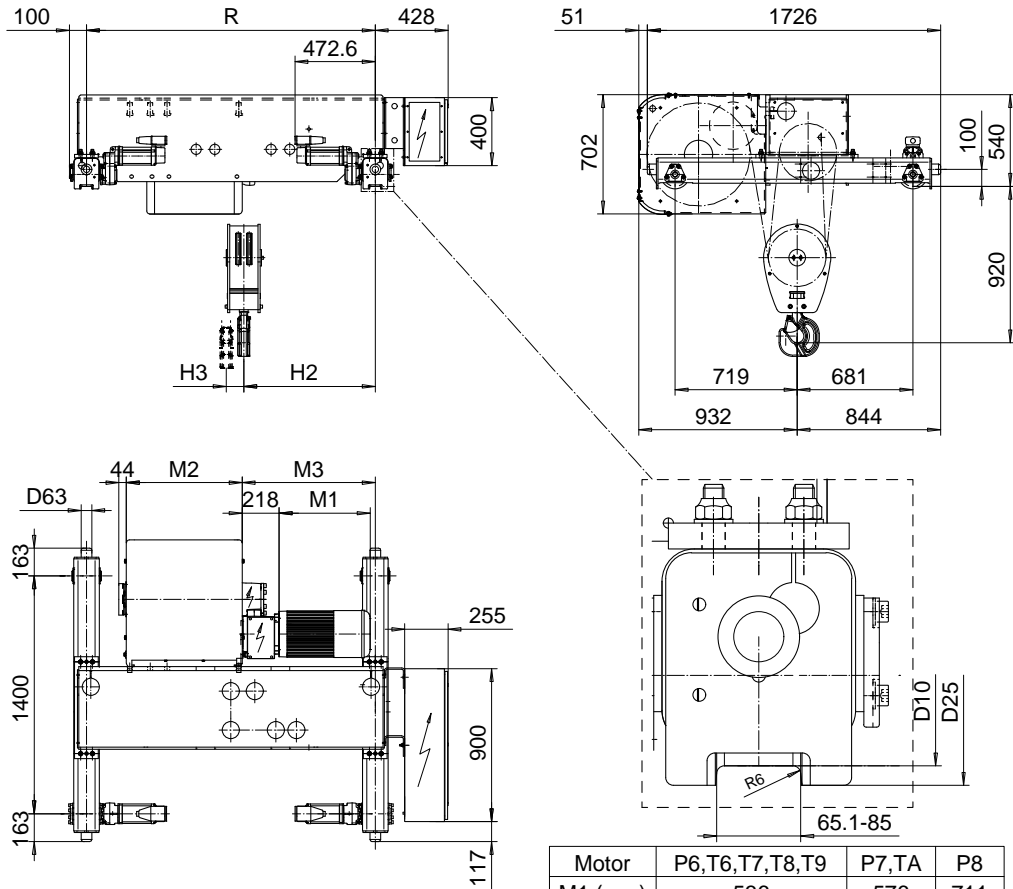


DOUBLE GIRDER, MEDIUM, 4 PART SINGLE
Hoist type:
SX6 041...D0

SI-60Hz



Motor	P6, T6, T7, T8, T9	P7, TA	P8
M1 (mm)	536	576	711

HOL	Length	M2	M3	H2	H3	min R-max R	Weight
(m)	code	(mm)	(mm)	(mm)	(mm)	(mm)	(kg)
7.5	C	462	658	668	69	1400-2400	1690
10.5	D	562	783	788	94	1700-2400	1790
14	E	682	783	788	125	1700-3100	1850
18	F	832	933	914	161	2000-3800	1950
23.5	G	1022	1143	1068	210	2400-4200	2110
30.5	H	1272	1479	1395	273	3100-4200	2300
40	J	1622	1543	1494	360	3400-4200	2610
48.5	K	1922	1969	1856	434	4200	2960

Load	Class	Hoisting motor				
		Hoisting speed (m/min): Gear code				
(kg)	Fem/ISO	4.8/0.7: E	6/1: F	7.5/1.3: G	9.5 H	12: J
12500	3m/M6	P6, T6	P6, T6	P7, T7	T8	T9
16000	2m/M5	P6, T6	P6, T6	P7, T7	T8	T9
20000	1Am/M4	P6, T6	P7, T7	P8, T8	T9	TA

Note: minR is minimum rail gauge when service platform is supplied
 Standard rail gauges are 1400, 1700, 2000, 2400, 2700, 3100, 3400
 3800, and 4200 mm

H2, M3 and weight are calculated at minR

This document is the absolute property of R&M Materials Handling, Inc. This document must not be copied without the written permission of R&M Materials Handling, Inc. The contents thereof must not be disclosed to a third party nor be used for any unauthorized purpose. Contravention will be prosecuted.

ETPAL Design	ETPAL Chd	Appd	Ref Drawing	QD-M-04
2002-09-02 Date	TROLLEY; DOUBLE GIRDER			1 of 19 Folder
SLEQDOCV Owner Dept	MEDIUM, 4 ROPE FALLS			Issue
R&M MATERIALS HANDLING, INC. HOIST & CRANE PRODUCTS SARASOTA, FL 34237	D002144-A			5