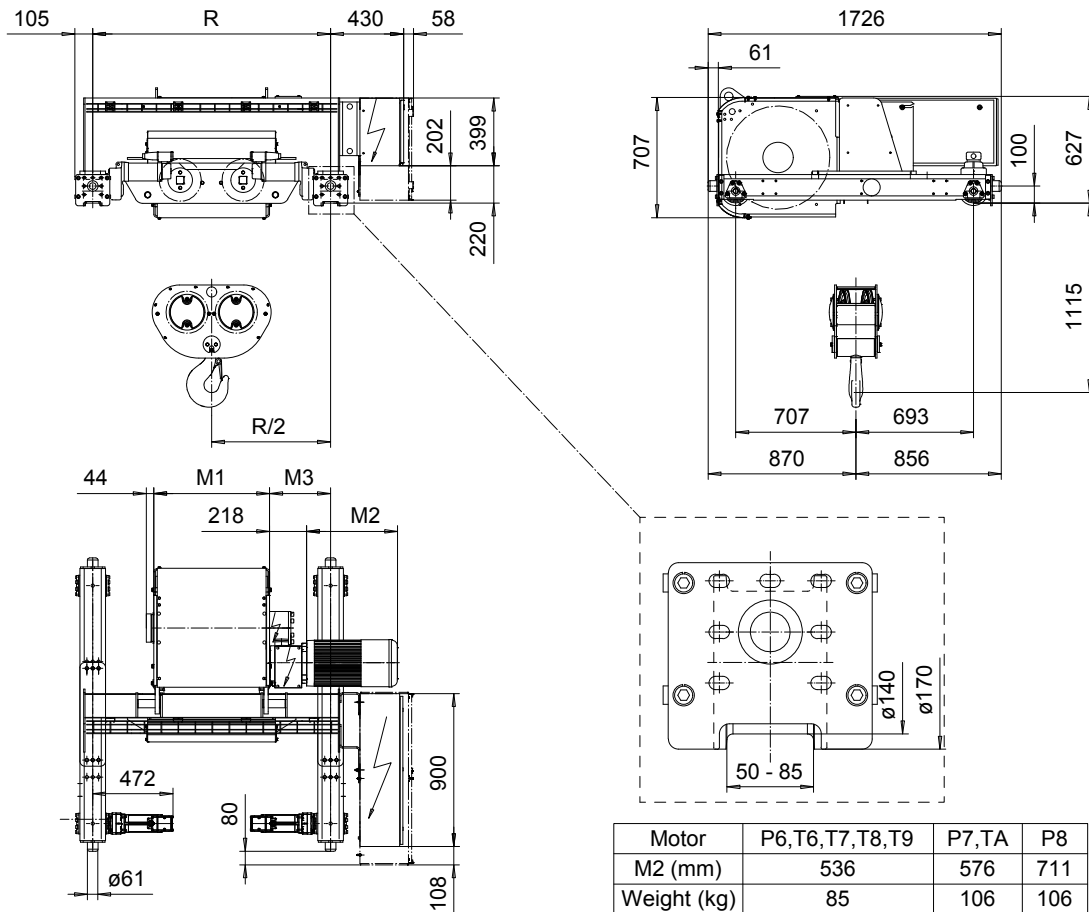


**DOUBLE GIRDER, MEDIUM, 4 PART DOUBLE**  
**Hoist type:**  
**SX6 042...D0**

SI-60Hz



Motor	P6,T6,T7,T8,T9	P7,TA	P8
M2 (mm)	536	576	711
Weight (kg)	85	106	106

HOL (m)	Length code	M1 (mm)	M3 (mm)	min R-max R (mm)	Weight* (kg)
8	E	682	359	1400	1350
11	F	832	434	1700	1440
14.5	G	1022	339	1700-2000	1510
19.5	H	1272	364	2000-2400	1620
26	J	1622	389	2400-2700	1770
31.5	K	1922	389	2700-3100	1950
38.5	L	2272	414	3100-3400	2190
43	M	2522	439	3400-3800	2340
49	N	2822	489	3800-4200	2520

Load (kg)	Class Fem/ISO	Hoisting motor				
		Hoisting speed (m/min): Gear code				
		4.8/0.8: E	6/1: F	7.5/1.3: G	9.5: H	12: J
12500	3m/M6	P6,T6	P6,T6	P7,T7	T8	T9
16000	2m/M5	P6,T6	P6,T6	P7,T7	T8	T9
20000	1Am/M4	P6,T6	P7,T7	P8,T8	T9	TA

\*Weight calculated with P6 motor.

Note: minR is minimum rail gauge when service platform is supplied  
 Standard rail gauges are 1400, 1700, 2000, 2400, 2700, 3100, 3400, 3800, and 4200 mm  
 M3 and weight are calculated at minR

This document is the absolute property of R&M Materials Handling, Inc. This document must not be copied without the written permission of R&M Materials Handling, Inc. The contents thereof must not be disclosed to a third party nor be used for any unauthorized purpose. Contravention will be prosecuted.

ETFPAL Design 2002-09-03 Date	ETFPAL Chd Appd	Ref Drawing	QD-M-24
SLEQDCV Owner Dept	TROLLEY; DOUBLE GIRDER MEDIUM, 2X4 ROPE FALLS		1 of 19 Folder
R&M R&M MATERIALS HANDLING, INC. HOIST & CRANE PRODUCTS SHEWAN-WATSON, USA	D006652-A		Issue 0