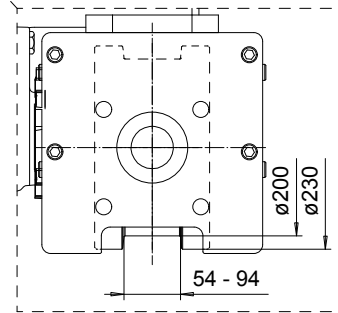
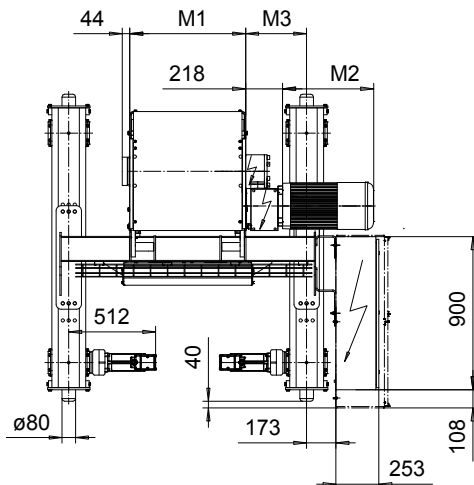
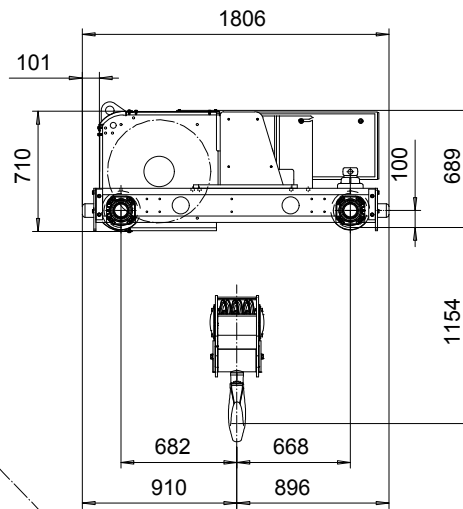
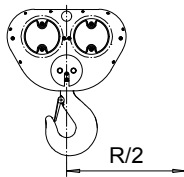
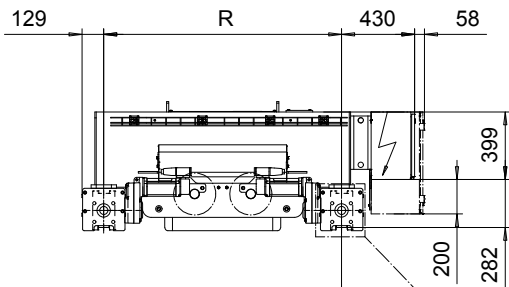


DOUBLE GIRDER, MEDIUM, 6 PART DOUBLE
Hoist type:
SX6 062...D0

SI-60Hz



Motor	P6,T6,T7,T8,T9	P7,TA	P8
M2 (mm)	536	576	711
Weight (kg)	85	106	106

HOL	Length	M1	M3	min R-max R	Weight*
(m)	code	(mm)	(mm)	(mm)	(kg)
5.5	E	682	359	1400	1600
7	F	832	434	1700	1690
9.5	G	1022	339	1700-200	1750
13	H	1272	364	2000-2400	1870
17	J	1622	389	2400-2700	2070
21	K	1922	389	2700-3100	2260
25.5	L	2272	414	3100-3400	2510
28.5	M	2522	439	3400-3800	2670
32.5	N	2822	489	3800-4200	2880

Load (kg)	Class Fem/ISO	Hoisting motor				
		Hoisting speed (m/min): Gear code				
		3/0.5: E	3.8/0.6: F	4.8/0.8: G	6: H	7.5: J
20000	3m/M6	P6,T6	P6,T6	P7,T7	T8	T9
25000	2m/M5	P6,T6	P6,T6	P7,T7	T8	T9
30000	1Am/M4	P6,T6	P7,T7	P8,T8	T9	TA

*Weight calculated with P6 motor.

Note: minR is minimum rail gauge when service platform is supplied
 Standard rail gauges are 1400, 1700, 2000, 2400, 2700, 3100, 3400
 3800, and 4200 mm
 M3 and weight are calculated at minR

This document is the absolute property of R&M Materials Handling, Inc. This document must not be copied without the written permission of R&M Materials Handling, Inc. The contents thereof must not be disclosed to a third party nor be used for any unauthorized purpose. Contravention will be prosecuted.

ETFPAL Design	ETFPAL Chd	Appd	Ref Drawing	QD-M-26
2002-09-03 Date	TROLLEY; DOUBLE GIRDER			1 of 19 Folder
SLEQDCV Owner Dept	MEDIUM, 2x6 ROPE FALLS			
R&M	D006653-A			Issue 0