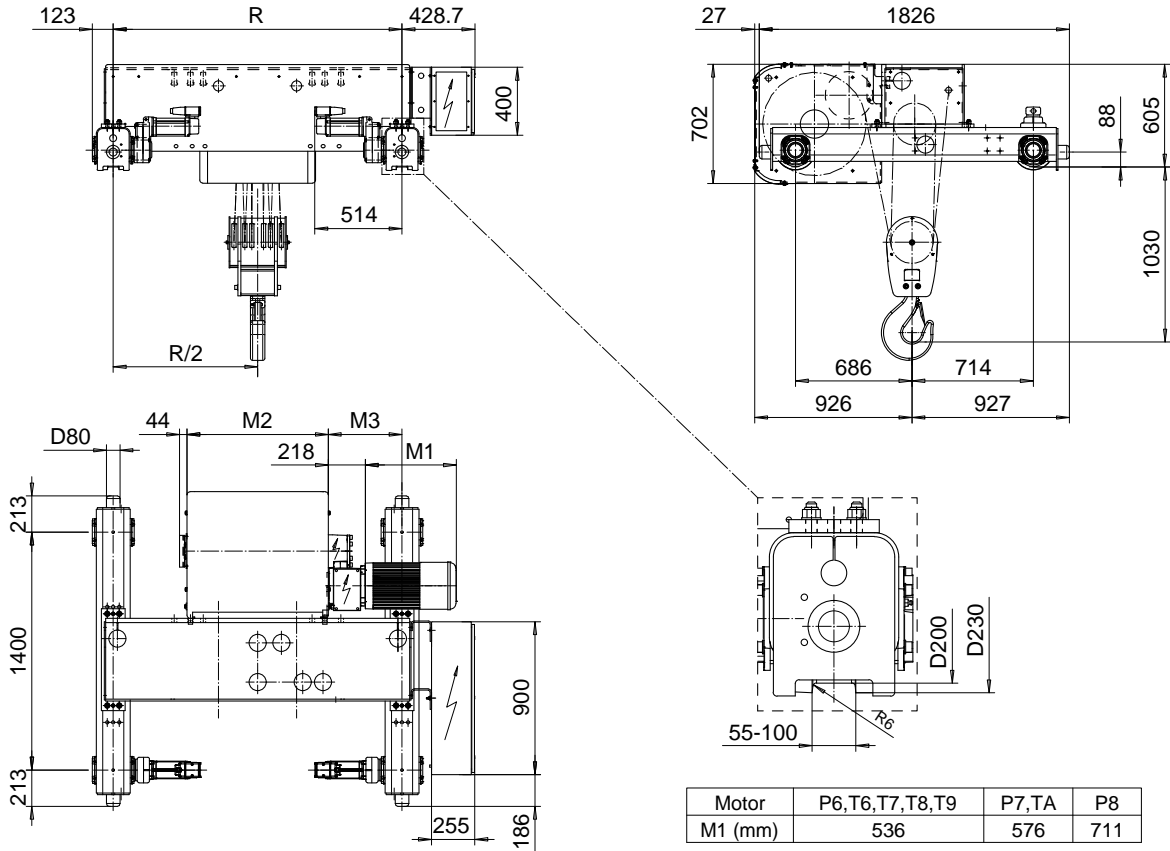


DOUBLE GIRDER, MEDIUM, 6 PART DOUBLE
Hoist type:
SX6 062...D0

SI-60Hz



Motor	P6,T6,T7,T8,T9	P7,TA	P8
M1 (mm)	536	576	711

HOL (m)	Length code	M2 (mm)	M3 (mm)	min R-max R (mm)	Weight (kg)
5.5	E	682	359	1400-2400	2060
7	F	832	434	1700-2400	2170
9.5	G	1022	339	2000-2700	2230
13	H	1272	364	2000-3100	2390
17	J	1622	389	2400-3400	2590
21	K	1922	389	2700-4200	2820
25.5	L	2272	414	3100-4200	3050
28.5	M	2522	439	3400-4200	3230
32.5	N	2822	489	3800-4200	3490

Load (kg)	Class Fem/ISO	Hoisting motor				
		Hoisting speed (m/min): Gear code				
		3/0.5: E	3.8/0.6: F	4.8/0.8: G	6: H	7.5: J
20000	3m/M6	P6,T6	P6,T6	P7,T7	T8	T9
25000	2m/M5	P6,T6	P6,T6	P7,T7	T8	T9
30000	1Am/M4	P6,T6	P7,T7	P8,T8	T9	TA

Note: minR is minimum rail gauge when service platform is supplied
 Standard rail gauges are 1400, 1700, 2000, 2400, 2700, 3100, 3400
 3800, and 4200 mm

M3 and weight are calculated at minR

This document is the absolute property of R&M Materials Handling, Inc. This document must not be copied without the written permission of R&M Materials Handling, Inc. The contents thereof must not be disclosed to a third party nor be used for any unauthorized purpose. Contravention will be prosecuted.

ETFPAL Design	ETFPAL Chd	Appd	Ref Drawing	QD-M-26
2002-09-03 Date	TROLLEY; DOUBLE GIRDER			1 of 19 Folder
SLEQDOCV Owner Dept	MEDIUM, 2x6 ROPE FALLS			
R&M MATERIALS HANDLING, INC. HOIST & CRANE PRODUCTS SARASOTA, FLORIDA, USA	D002158-A			Issue 6