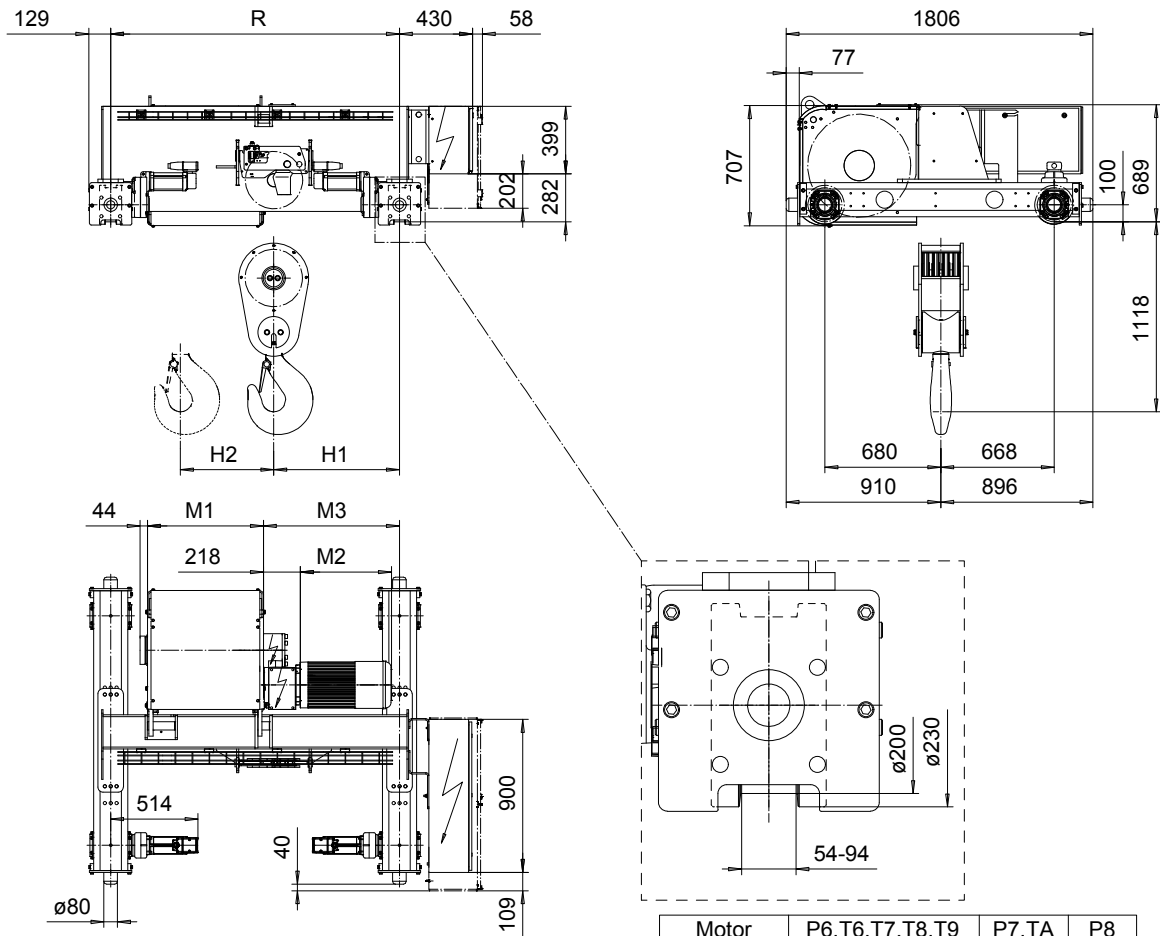


DOUBLE GIRDER, MEDIUM, 8 PART SINGLE

Hoist type:

SX6 081...D0

SI-60Hz



Motor	P6,T6,T7,T8,T9	P7,TA	P8
M2 (mm)	536	576	711
Weight (kg)	85	234	234

HOL (m)	Length code	M1 (mm)	M3 (mm)	H1 (mm)	H2 (mm)	min R-max R (mm)	Weight* (kg)
7	E	682	801	740	63	1700-2000	2280
9	F	832	951	890	81	2000-2700	2400
11.5	G	1022	1151	1090	105	2400-3100	2560
15	H	1272	1471	1410	137	3100-3800	2840
20	J	1622	1561	1500	180	3400-4200	3180
24	K	1922	1946	1885	217	4200	3410

*Weight calculated with P6 motor.

Load (kg)	Class Fem/ISO	Hoisting motor					
		Hoisting speed (m/min): Gear code					
		2.4/0.4: E	3/0.5: F	3.8/0.6: G	3.8: G	4.8: H	6: J
32000	2m/M5	P6,T6	P7,T7	---	T8	T9	TA
40000	1Am/M4	P6,T6	P7,T7	P8,T8	---	T9	TA

Note: minR is minimum rail gauge when service platform is supplied
 Standard rail gauges are 1400, 1700, 2000, 2400, 2700, 3100, 3400
 3800, and 4200 mm
 H2, M3 and weight are calculated at minR

This document is the absolute property of R&M Materials Handling, Inc. This document must not be copied without the written permission of R&M Materials Handling, Inc. The contents thereof must not be disclosed to a third party nor be used for any unauthorized purpose. Contravention will be prosecuted.

ETPAL Design	ETPAL Chd	Appd	Ref Drawing	QD-M-08
2002-09-02	TROLLEY; DOUBLE GIRDER			1 of 19 Folder
SLEQDCV Date	MEDIUM, 8 ROPE FALLS			
R&M	D006650-A			Issue 0