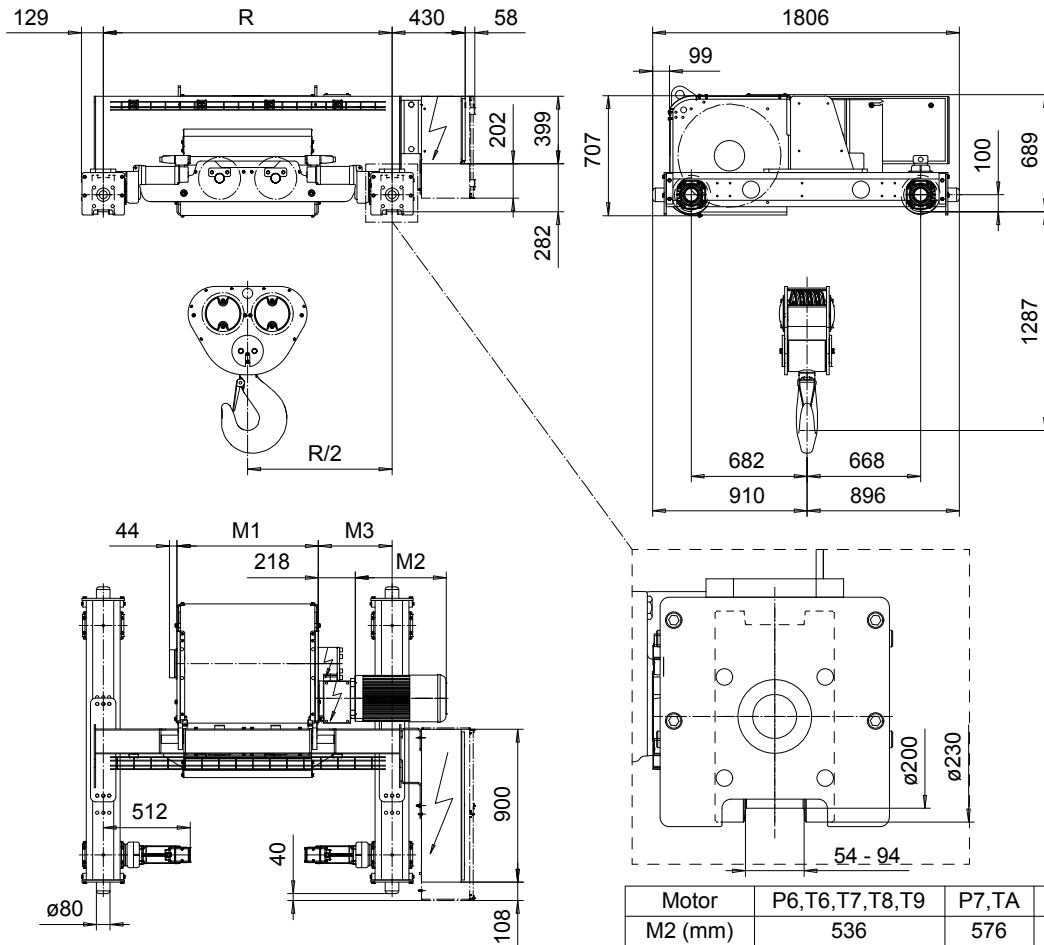


DOUBLE GIRDER, MEDIUM, 8 PART DOUBLE
Hoist type:
SX6 082...D0

SI-60Hz



Motor	P6,T6,T7,T8,T9	P7,TA	P8
M2 (mm)	536	576	711
Weight (kg)	85	106	106

HOL	Length	M2	M3	min R-max R	Weight*
(m)	code	(mm)	(mm)	(mm)	(kg)
5.5	F	832	434	1700	1800
7	G	1022	489	1700-2000	1870
9.5	H	1272	364	2000-2400	2000
13	J	1622	389	2400-2700	2190
15.5	K	1922	389	2700-3100	2390
19	L	2272	414	3100-3400	2630
21.5	M	2522	439	3400-3800	2800
24.5	N	2822	489	3800-4200	3010

*Weight calculated with P6 motor.

Load	Class	Hoisting motor					
		Hoisting speed (m/min): Gear code					
(kg)	Fem/ISO	2.4/0.4: E	3/0.5: F	3.8/0.6: G	3.8: G	4.8: H	6: J
32000	2m/M5	P6,T6	P7,T7	---	T8	T9	TA
40000	1Am/M4	P6,T6	P7,T7	P8	T8	T9	TA

Note: minR is minimum rail gauge when service platform is supplied
 Standard rail gauges are 1400, 1700, 2000, 2400, 2700, 3100, 3400
 3800, and 4200 mm
 M3 and weight are calculated at minR

This document is the absolute property of R&M Materials Handling, Inc. This document must not be copied without the written permission of R&M Materials Handling, Inc. The contents thereof must not be disclosed to a third party nor be used for any unauthorized purpose. Contravention will be prosecuted.

ETFPAL Design	ETFPAL Chd	Appd	Ref Drawing	QD-M-28
2002-09-03 Date	TROLLEY; DOUBLE GIRDER			1 of 19 Folder
SLEQDCV Owner Dept	MEDIUM, 2X8 ROPE FALLS			
R&M	D006654-A			Issue 0