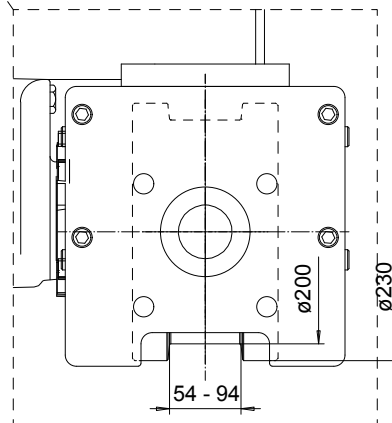
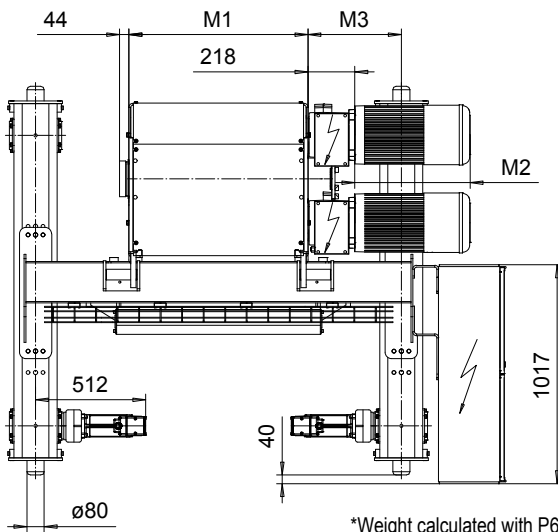
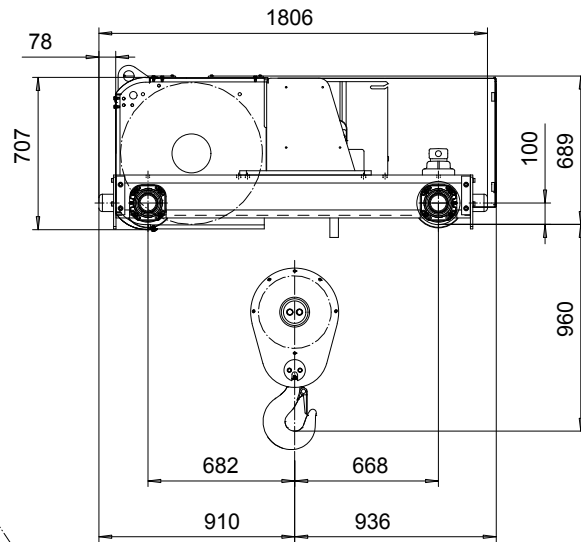
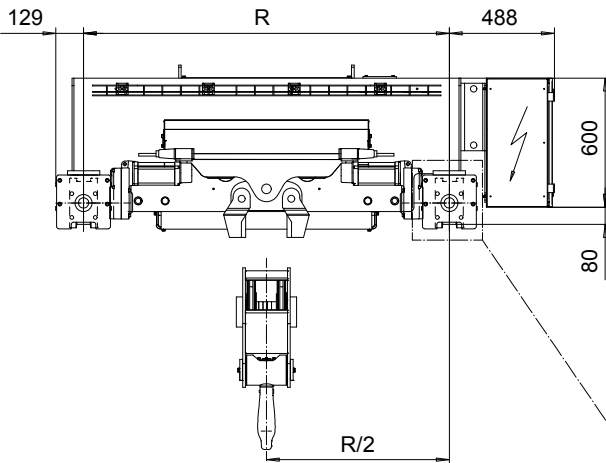


DOUBLE GIRDER, MEDIUM, 2 PART DOUBLE
 Hoist type:
 SX7 022...D0

SI-60Hz



*Weight calculated with P6 motor.

HOL (m)	Length code	M1 (mm)	M3 (mm)	min R-max R (mm)	Weight* (kg)
15.5	F	832	434	1700	1580
20.5	G	1022	339	1700-2000	1720
27.5	H	1272	364	2000-2400	1840
37.5	J	1622	389	2400-2700	2060
46	K	1922	389	2700-3100	2240
55.5	L	2272	414	3100-3400	2460
62.5	M	2522	439	3400-3800	2610
71	N	2822	489	3800-4200	2810

Load (kg)	Class Fem/ISO	Hoisting motor				
		Hoisting speed (m/min): Gear code				
		9.6/1.4: E	12/1.9: F	15/2.4: G	19.2: H	24: J
12500	3m/M6	P6,T6	P6,T6	P7,T7	T8	T9
16000	2m/M5	P6,T6	P6,T6	P7,T7	T8	T9
20000	1Am/M4	P6,T6	P7,T7	T8	T9	-

Motor	P6,T6,T7, T9	P7
M2 (mm)	536	576
Weight (kg)	85	106

Note: minR is minimum rail gauge when service platform is supplied
 Standard rail gauges are 1400, 1700, 2000, 2400, 2700, 3100, 3400
 3800, and 4200 mm
 M3 and weight are calculated at minR

This document is the absolute property of R&M Materials Handling, Inc. This document must not be copied without the written permission of R&M Materials Handling, Inc. The contents thereof must not be disclosed to a third party nor be used for any unauthorized purpose. Contravention will be prosecuted.

ETFPAL Design	ETFPAL Cnd	Appd	Ref Drawing	QE-M-22
2003-01-13				
SLEQDOCV	TROLLEY; DOUBLE GIRDER			1 of 15
Owner Dept	MEDIUM, 2X2 ROPE FALLS			Folder
R&M	D006655-A			Issue
				0