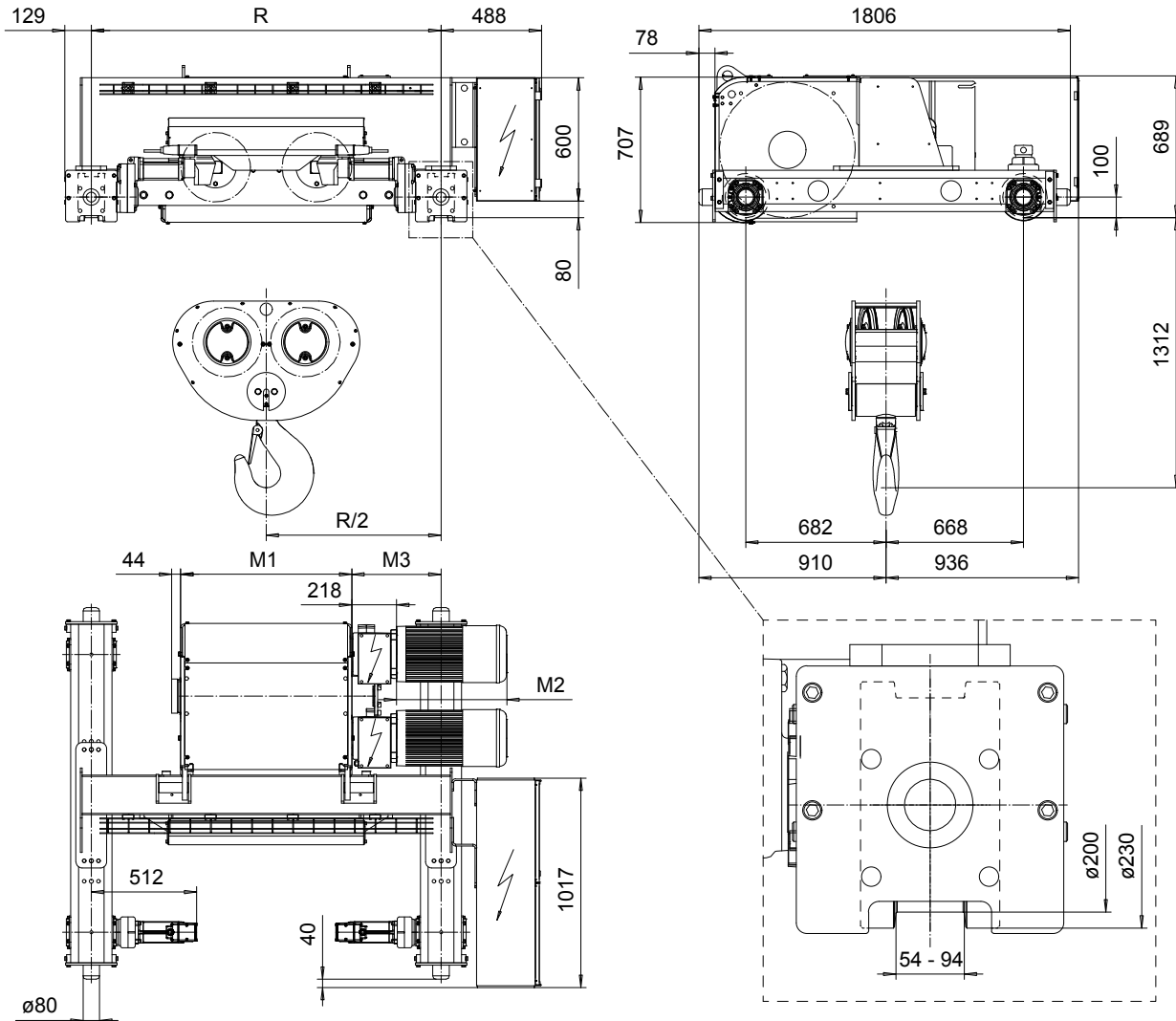


DOUBLE GIRDER, MEDIUM, 4 PART DOUBLE
Hoist type:
SX7 042...D0

SI-60Hz



Motor	P6,T6,T7, T9	P7
M2 (mm)	536	576
Weight (kg)	85	106

Load (kg)	Class	Hoisting motor				
		Hoisting speed (m/min): Gear code				
		4.8/0.7: E	6/1: F	7.5/1.2: G	9.6: H	12: J
25000	3m/M6	P6,T6	P6,T6	P7,T7	T8	T9
32000	2m/M5	P6,T6	P6,T6	P7,T7	T8	T9
40000	1Am/M4	P6,T6	P7,T7	T8	T9	-

HOL (m)	Length code	C (mm)	M2 (mm)	M3 (mm)	min R-max R (mm)	Weight* (kg)
7.5	F	1440	832	434	1700	1990
10	G	1440	1022	339	1700-2000	2140
13.5	H	1440	1272	364	2000-2400	2260
18.5	J	1554	1622	389	2400-2700	2480
23	K	1554	1922	389	2700-3100	2660
27.5	L	1554	2272	414	3100-3400	2880
31	M	1554	2522	439	3400-3800	3030
35.5	N	1554	2822	489	3800-4200	3230

*Weight calculated with P6 motor.

Note: minR is minimum rail gauge when service platform is supplied
 Standard rail gauges are 1400, 1700, 2000, 2400, 2700, 3100, 3400
 3800, and 4200 mm
 M3 and weight are calculated at minR

This document is the absolute property of R&M Materials Handling, Inc. This document must not be copied without the written permission of R&M Materials Handling, Inc. The contents thereof must not be disclosed to a third party nor be used for any unauthorized purpose. Contravention will be prosecuted.

ETPAL Design 2003-01-13 Date	ETPAL Chd SLEQDCV Owner Dept	Appd	Ref Drawing	QE-M-24
TROLLEY; DOUBLE GIRDER			1 of 15	
MEDIUM, 2X4 ROPE FALLS			Folder	
R&M	S&M MATERIALS HANDLING, INC. HOIST & CRANE PRODUCTS SERVING THE WORLD	D006656-A		Issue 0