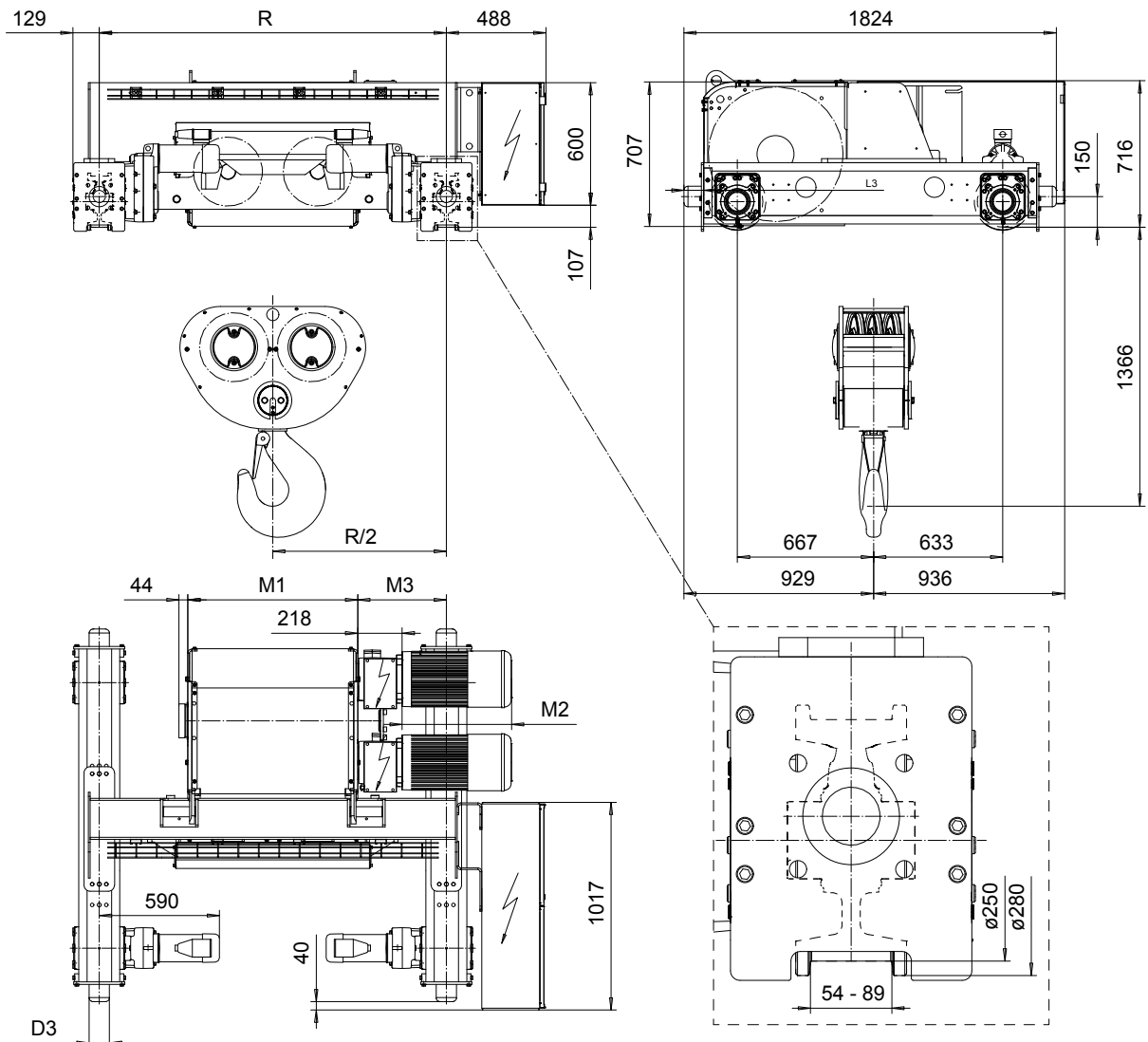


DOUBLE GIRDER, MEDIUM, 6 PART DOUBLE

Hoist type:

SX7 062...D0

SI-60Hz



Motor	P6,T6,T7, T9	P7
M1 (mm)	536	576
Weight (kg)	85	106

Load (kg)	Class	Hoisting motor				
		Hoisting speed (m/min): Gear code				
	Fem/ISO	3/0.5: E	3.8/0.6: F	4.8/0.7: G	6: H	7.5: J
40000	3m/M6	P6,T6	P6,T6	P7,T7	T8	T9
50000	2m/M5	P6,T6	P6,T6	P7,T7	T8	T9
60000	1Am/M4	P6,T6	P7,T7	T8	T9	-

HOL (m)	Length code	M1 (mm)	M3 (mm)	min R-max R (mm)	Weight* (kg)
5	F	832	434	1700	2330
6.5	G	1022	339	1700-2000	2480
9	H	1272	364	2000-2400	2650
12.5	J	1622	389	2400-2700	2920
15	K	1922	389	2700-3100	3180
18.5	L	2272	414	3100-3400	3440
20.5	M	2522	439	3400-3800	3640
23.5	N	2822	489	3800-4200	3900

Note: minR is minimum rail gauge when service platform is supplied  
 Standard rail gauges are 1400, 1700, 2000, 2400, 2700, 3100, 3400  
 3800, and 4200 mm  
 M3 and weight are calculated at minR

\*Weight calculated with P6 motor.

This document is the absolute property of R&M Materials Handling, Inc. This document must not be copied without the written permission of R&M Materials Handling, Inc. The contents thereof must not be disclosed to a third party nor be used for any unauthorized purpose. Contravention will be prosecuted.

ETFPAL	ETFPAL	App'd	Ref Drawing	QE-M-26
Design	Chd			
2003-01-13			TROLLEY; DOUBLE GIRDER	1 of 15 Folder
Date			MEDIUM, 2X6 ROPE FALLS	
SLEQDCV				
Owner Dept				
R&M	R&M MATERIALS HANDLING, INC.			
	HOIST & CRANE PRODUCTS			
	BRIDGEPORT, OHIO		D006657-A	Issue 0