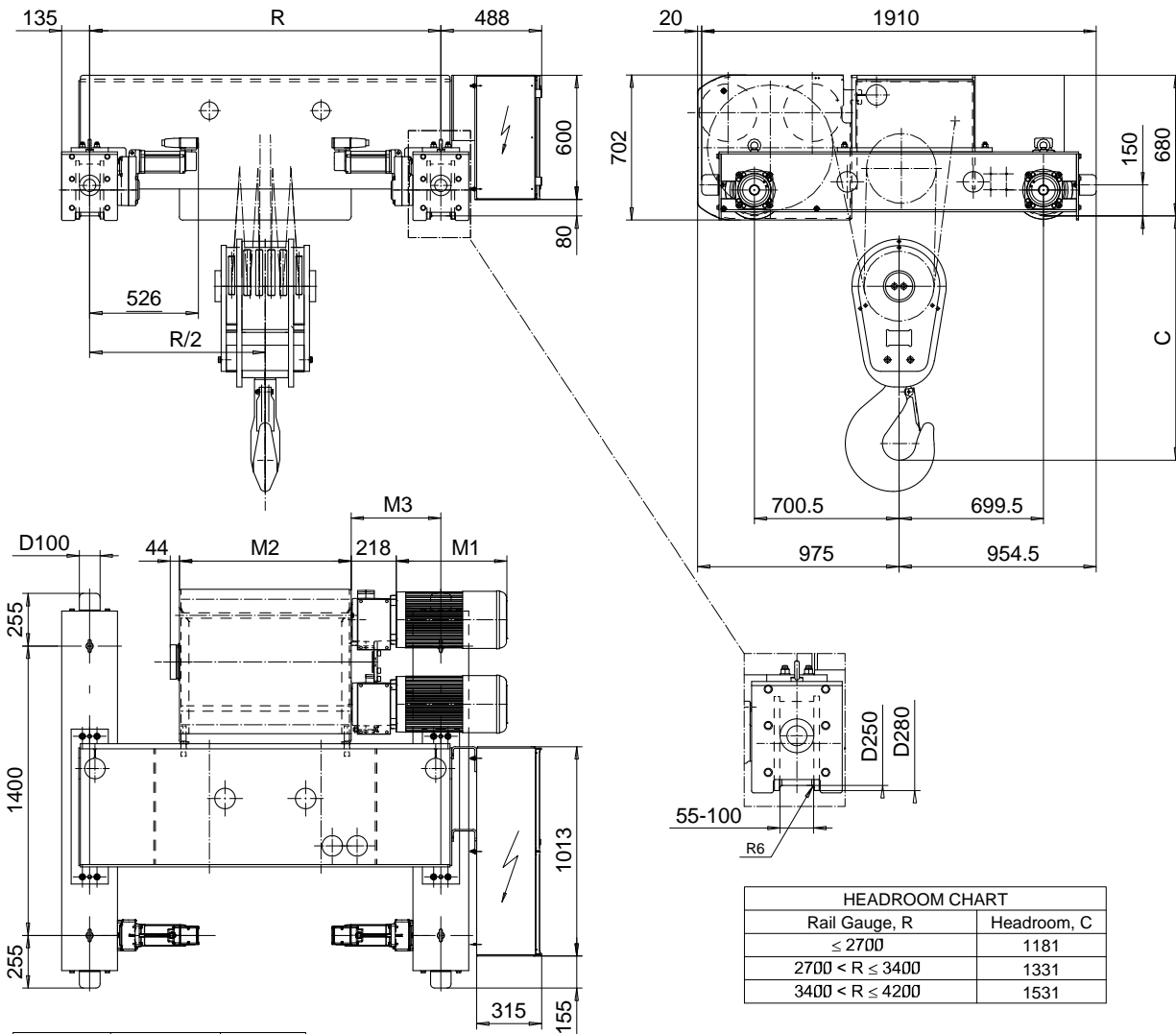


# DOUBLE GIRDER, MEDIUM, 6 PART DOUBLE

Hoist type:

SX7 062...D0

SI-60Hz



Motor	P6,T6,T7	P7
M1 (mm)	536	576

Rail Gauge, R	Headroom, C
≤ 2700	1181
2700 < R ≤ 3400	1331
3400 < R ≤ 4200	1531

Load (kg)	Class Fem/ISO	Hoisting motor					
		Hoisting speed (m/min): Gear code					
		3/0.5: E	3.8/0.6: F	4.8/0.7: G	6: H	7.5: J	
40000	3m/M6	P6,T6	P6,T6	P7,T7	T8	T9	
50000	2m/M5	P6,T6	P6,T6	P7,T7	T8	T9	
60000	1Am/M4	P6,T6	P7,T7	T8	T9	-	

HOL (m)	Length code	M2 (mm)	M3 (mm)	min R-max R (mm)	Weight (kg)
5	F	832	434	1700-2000	2800
6.5	G	1022	339	2000-2400	2900
9	H	1272	364	2000-2700	3200
12.5	J	1622	389	2400-3100	3450
15	K	1922	389	2700-3400	3750
18.5	L	2272	414	3100-3800	4050
20.5	M	2522	439	3400-4200	4300
23.5	N	2822	489	3800-4200	4550

Note: minR is minimum rail gauge when service platform is supplied  
 Standard rail gauges are 1400, 1700, 2000, 2400, 2700, 3100, 3400  
 3800, and 4200 mm  
 M3 and weight are calculated at minR

This document is the absolute property of R&M Materials Handling, Inc. This document must not be copied without the written permission of R&M Materials Handling, Inc. The contents thereof must not be disclosed to a third party nor be used for any unauthorized purpose. Contravention will be prosecuted.

ETTPAL Design	ETTPAL Chd	Appd	Ref Drawing	QE-M-26
2003-01-13	TROLLEY; DOUBLE GIRDER			1 of 15 Folder
SLEQDOCV Date	MEDIUM, 2X6 ROPE FALLS			
SLEQDOCV Owner Dept	D002336-A			Issue 7