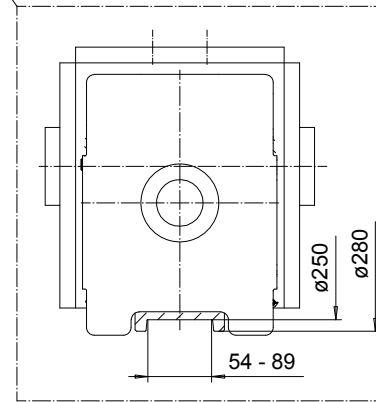
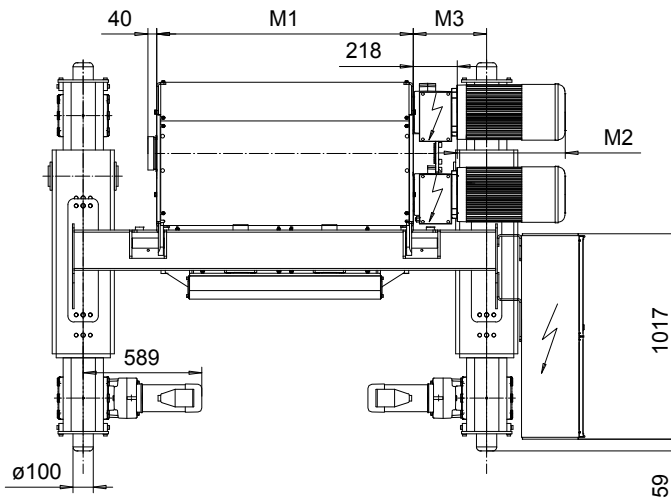
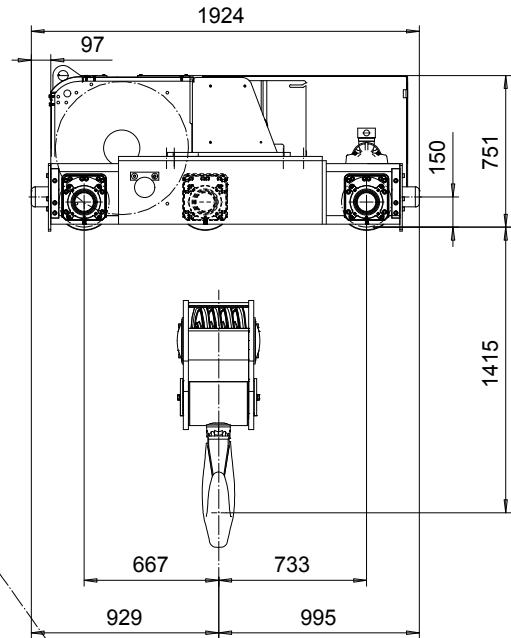
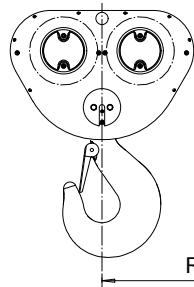
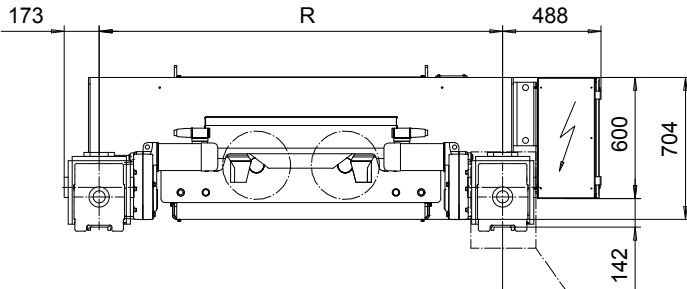


DOUBLE GIRDER, MEDIUM, 8 PART DOUBLE
Hoist type:
SX7 082...D0

SI-60Hz



Motor	P6,T6,T7, T8, T9	P7
M2 (mm)	536	576
Weight (kg)	85	106

Load (kg)	Class	Hoisting motor				
		Hoisting speed (m/min): Gear code				
		2.4/0.4: E	3/05: F	3.8/0.6: G	4.8: H	6: J
63000	2m/M5	P6,T6	P6,T6	P7,T7	T8	T9
80000	1Am/M4	P6,T6	P7,T7	T8	T9	-

HOL (m)	Length code	M1 (mm)	M3 (mm)	min R-max R (mm)	Weight* (kg)
6.5	H	1272	564	2400	3030
9	J	1622	389	2400-2700	3300
11	K	1922	389	2700-3100	3560
13.5	L	2272	414	3100-3400	3830
15.5	M	2522	439	3400-3800	4020
17.5	N	2822	489	3800-4200	4280

Note: minR is minimum rail gauge when service platform is supplied
Standard rail gauges are 1400, 1700, 2000, 2400, 2700, 3100, 3400
3800, and 4200 mm
M3 and weight are calculated at minR

*Weight calculated with P6 motor.

This document is the absolute property of R&M Materials Handling, Inc. This document must not be copied without the written permission of R&M Materials Handling, Inc.
The contents thereof must not be disclosed to a third party nor be used for any unauthorized purpose. Contravention will be prosecuted.

ETFPAL Design 2003-01-13 Date	ETFPAL Chd TROLLEY; DOUBLE GIRDER MEDIUM, 2X8 ROPE FALLS	Appd	Ref Drawing	QE-M-28
SLEQDOCV Owner Dept	R&M R&M MATERIALS HANDLING, INC. HOIST & GEAR PRODUCTS SPRINGFIELD, OHIO			Issue 0
	D006658-A			