

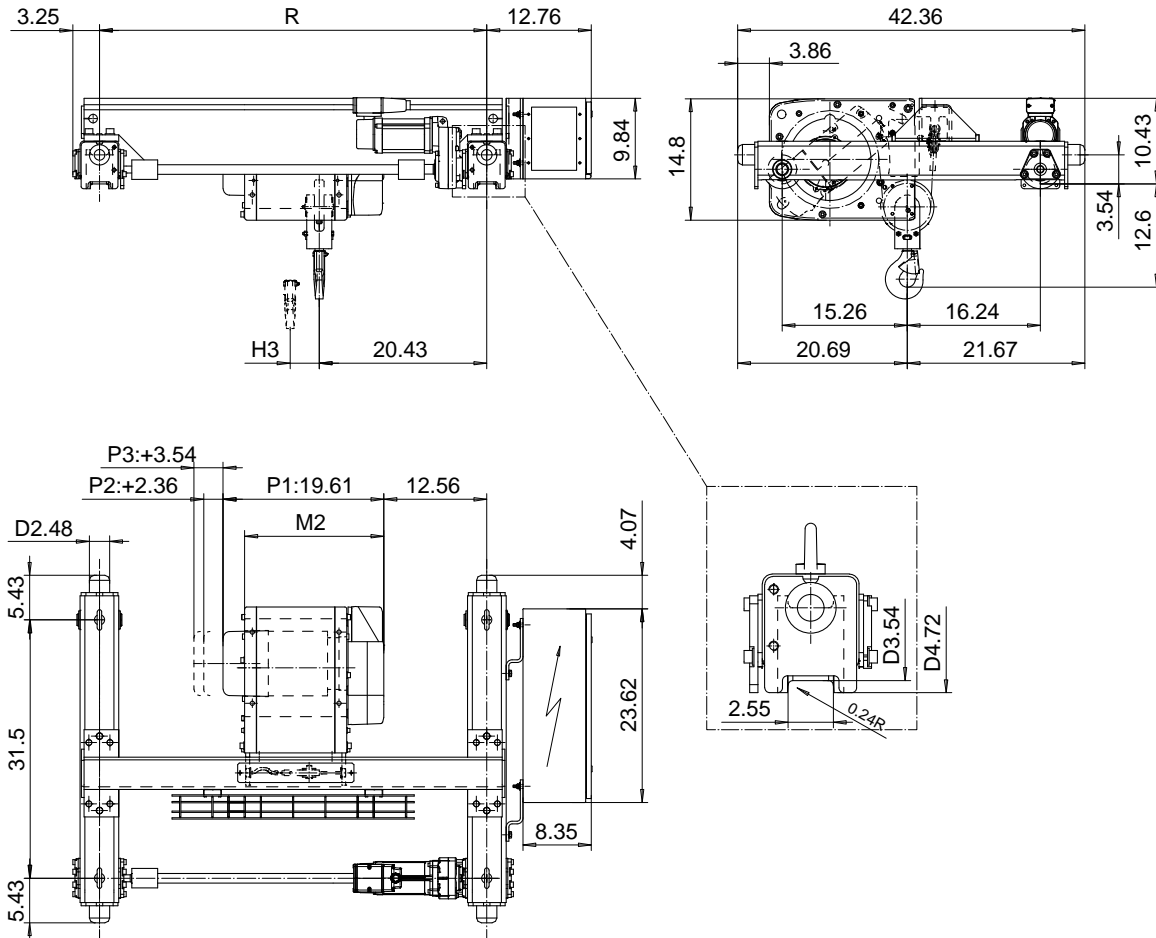
DOUBLE GIRDER, MEDIUM, 2 PART SINGLE

Hoist type:

SX2 021..D0

SX3 021..D0

US-60Hz



Load (T)	Class ASME	Hoisting speed (ft/min)			
		Gear+Motor code:			
		F+P1	F+P2	G+P2	H+P3
3/4	H4+	40/6.7	40/6.7	50/7.8	60/9.8
1	H4	40/6.7	40/6.7	50/7.8	60/9.8
1 1/4	H4+	-	40/6.7	50/7.8	60/9.8
1 1/2	H4	-	40/6.7	50/7.8	60/9.8
+ weight (lb):		-	20	20	26

HOL (ft-in)	Length code	M2 (inch)	H3 (inch)	min R (ft-in)	Weight (lb)
39'-4"	A	16.97	3.54	3'-11 1/4"	440
62'-4"	C	22.09	5.67	3'-11 1/4"	460

Note: minR is minimum rail gauge when second brake is supplied
Standard rail gauges are 3'-11 1/4", 4'-7 1/8", 5'-6 7/8", and 6'-6 3/4"

This document is the absolute property of R&M Materials Handling, Inc. This document must not be copied without the written permission of R&M Materials Handling, Inc. The contents thereof must not be disclosed to a third party nor be used for any unauthorized purpose. Contravention will be prosecuted.

Design	Chk	Appd	Ref Drawing	QA-M-02
Date	TROLLEY; DOUBLE GIRDER			1-10 Tol:Min
SIZE/MECE Owner Dept	MEDIUM, 2 ROPE FALLS			
R&M MATERIALS HANDLING, INC. 8001 & COLE BLVD SHELDON, IA	D002076-A			Drawn 5