

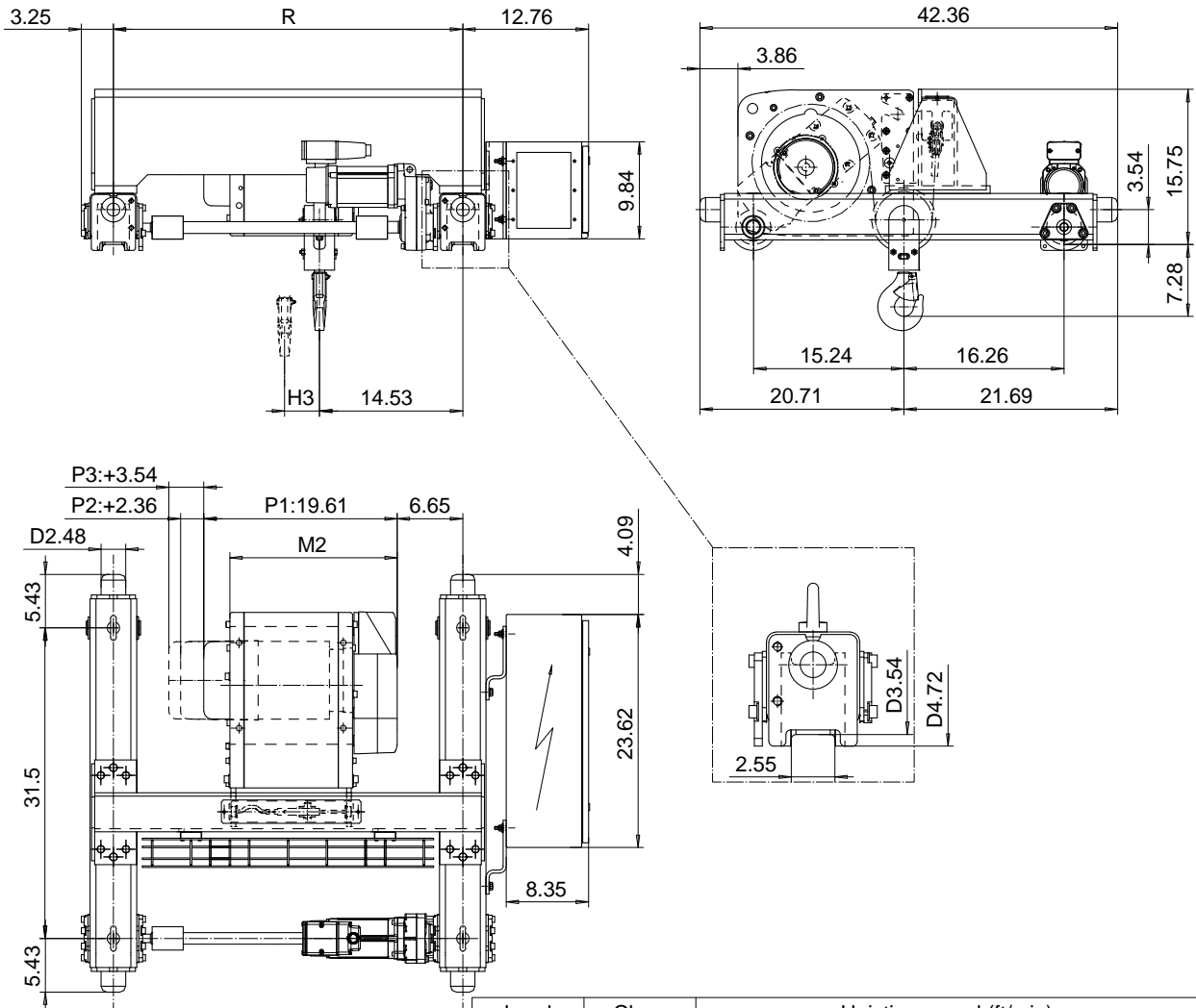
DOUBLE GIRDER, HIGH CONNECTION, 2 PART SINGLE

Hoist type:

SX2 021..DH

SX3 021..DH

US-60Hz



Load (TON)	Class ASME	Hoisting speed (ft/min)			
		Gear+Motor code:			
		F+P1	F+P2	G+P2	H+P3
3/4	H4+	40/6.7	40/6.7	50/7.8	60/9.8
1	H4	40/6.7	40/6.7	50/7.8	60/9.8
1 1/4	H4+	-	40/6.7	50/7.8	60/9.8
1 1/2	H4	-	40/6.7	50/7.8	60/9.8
+ weight (lb):		-	20	20	26

HOL (ft)	Length code	M2 (inch)	H3 (inch)	min R (ft)	Weight (lb)
39'-4"	A	16.97	3.54	2'-11 3/8"	420
62'-4"	C	22.09	5.67	2'-11 3/8"	440

Note: minR is minimum rail gauge when second brake is supplied
 Standard rail gauges are 2'-11 3/8", 3'-11 1/4", 4'-7 1/8", 5'-6 7/8", and 6'-6 3/4"

This document is the absolute property of R&M Materials Handling, Inc. This document must not be copied without the written permission of R&M Materials Handling, Inc. The contents thereof must not be disclosed to a third party nor be used for any unauthorized purpose. Contravention will be prosecuted.

Design	Chk	Appd	Ref Drawing	QA-H-02
Date	TROLLEY; DOUBLE GIRDER			
SLE/ME/CE Owner/Dept	HIGH, 2 ROPE FALLS			
R&M MATERIALS HANDLING, INC. 8021 & COBE BLVD SHEPHERD, OHIO	D002074-A			
	5			