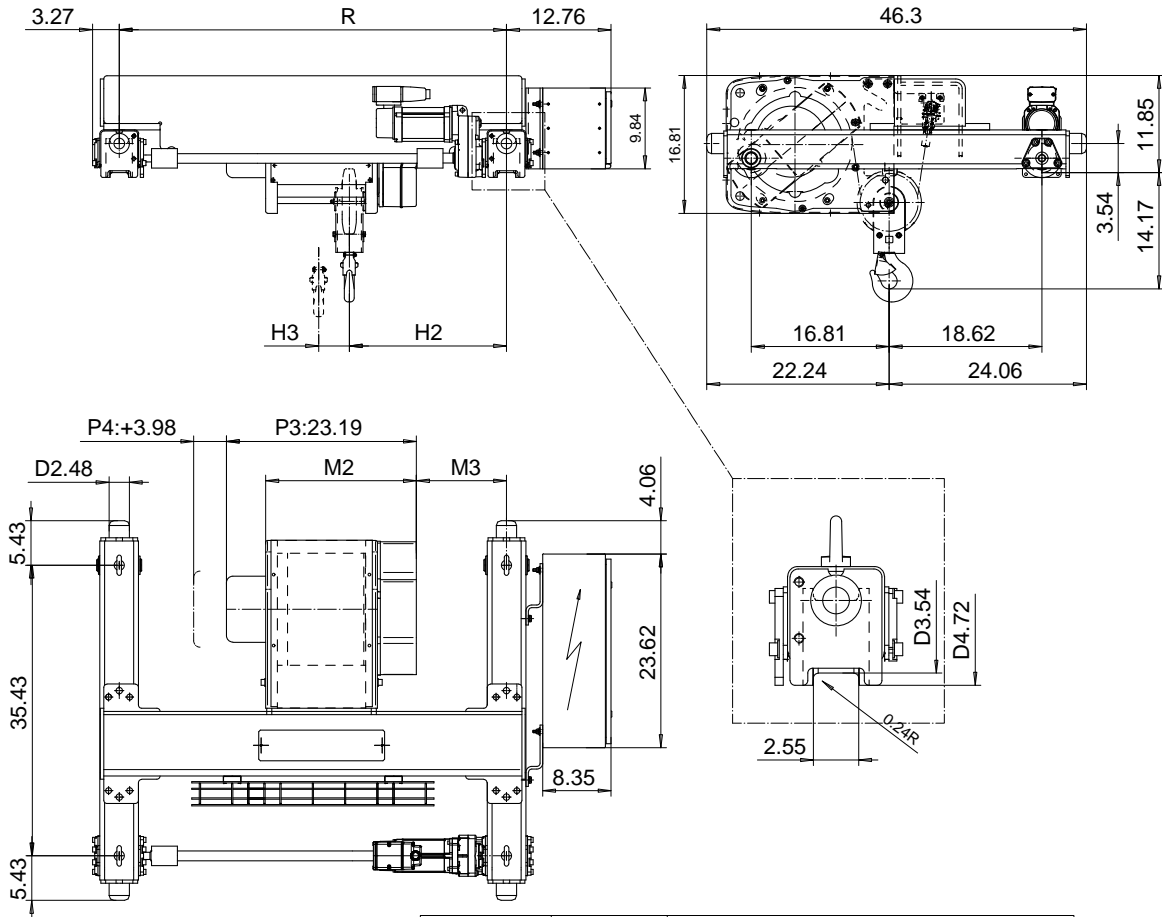


# DOUBLE GIRDER, MEDIUM, 2 PART SINGLE

Hoist type:

SX4 021...D0

US-60Hz



Load (T)	Class ASME	Hoisting speed (ft/min)		
		Gear+Motor code:		
1 1/2	H4+	E+P3 30/4.9	F+P3 40/6.7	H+P4 60/9.8
2	H4+	30/4.9	40/6.7	60/9.8
2 1/2	H4	30/4.9	40/6.7	60/9.8
+ weight (lb):		-	-	40

HOL (ft)	Length code	M2 (inch)	M3 (inch)	H2 (inch)	H3 (inch)	min R (ft)	Weight (lb)
39'-4"	B	18.38	11.02	19.17	3.74	3'-11 1/4"	620
59'-0"	C	22.32	11.02	19.17	5.66	3'-11 1/4"	640
78'-8"	D	26.25	13.85	22.00	7.59	4'-7 1/8"	670
98'-5"	E	30.98	13.85	22.00	9.92	4'-7 1/8"	700

Note: min R is minimum rail gauge when second brake is supplied  
Standard rail gauges are 3'-11 1/4", 4'-7 1/8", 5'-6 7/8", and 6'-6 3/4"

This document is the absolute property of R&M Materials Handling, Inc. This document must not be copied without the written permission of R&M Materials Handling, Inc. The contents thereof must not be disclosed to a third party nor be used for any unauthorized purpose. Contravention will be prosecuted.

Design	Chk	Appd	Ref Drawing	QB-M-02
Date	TROLLEY; DOUBLE GIRDER			1:10 Tol:Min
SLEPQEN01 Owner Dept	MEDIUM, 2 ROPE FALLS			
R&M MATERIALS HANDLING, INC. DESIGN & CONSTRUCTION SOLUTIONS, INC.	D002088-A			Drawn 4