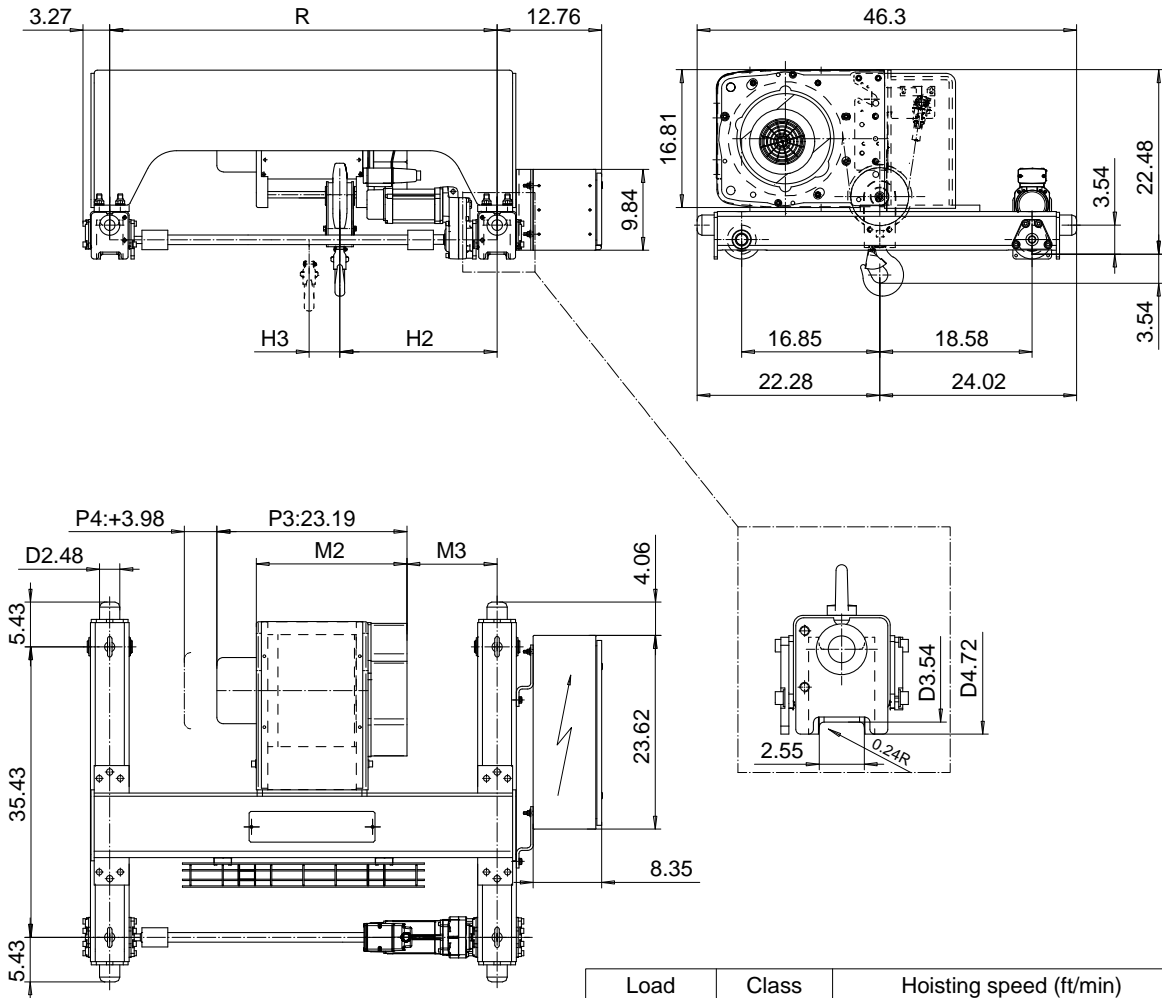


DOUBLE GIRDER, HIGH CONNECTION, 2 PART SINGLE

Hoist type:
SX4 021...DH

US-60Hz



Load (T)	Class ASME	Hoisting speed (ft/min)		
		Gear+Motor code:		
		E+P3	F+P3	H+P4
1 1/2	H4+	30/4.9	40/6.7	60/9.8
2	H4+	30/4.9	40/6.7	60/9.8
2 1/2	H4	30/4.9	40/6.7	60/9.8
+ weight (lb):		-	-	40

HOL (ft)	Length code	M2 (inch)	M3 (inch)	H2 (inch)	H3 (inch)	min R (ft)	Weight (lb)
39'-4"	B	18.38	5.11	13.26	3.74	2'-11 3/8"	642
59'-0"	C	22.32	5.11	13.26	5.66	2'-11 3/8"	662
78'-8"	D	26.25	4.01	12.16	7.59	2'-11 3/8"	692
98'-5"	E	30.98	9.92	18.07	9.92	3'-11 1/4"	734

Note: minR is minimum rail gauge when second brake is supplied
Standard rail gauges are 2'-11 3/8", 3'-11 1/4", 4'-7 1/8", 5'-6 7/8",
and 6'-6 3/4"

This document is the absolute property of R&M Materials Handling, Inc. This document must not be copied without the written permission of R&M Materials Handling, Inc. The contents thereof must not be disclosed to a third party nor be used for any unauthorized purpose. Contravention will be prosecuted.

Design	Chd	Appd	Ref Drawing	QB-H-02
Date	TROLLEY; DOUBLE GIRDER			1-130 Folder
SLEQENGL Owner Dept	HIGH, 2 ROPE FALLS			
R&M	R&M MATERIALS HANDLING, INC. HOIST & CRANE PRODUCTS SHEWAN/UMESDA, OHIO			Issue
D002229-A				4