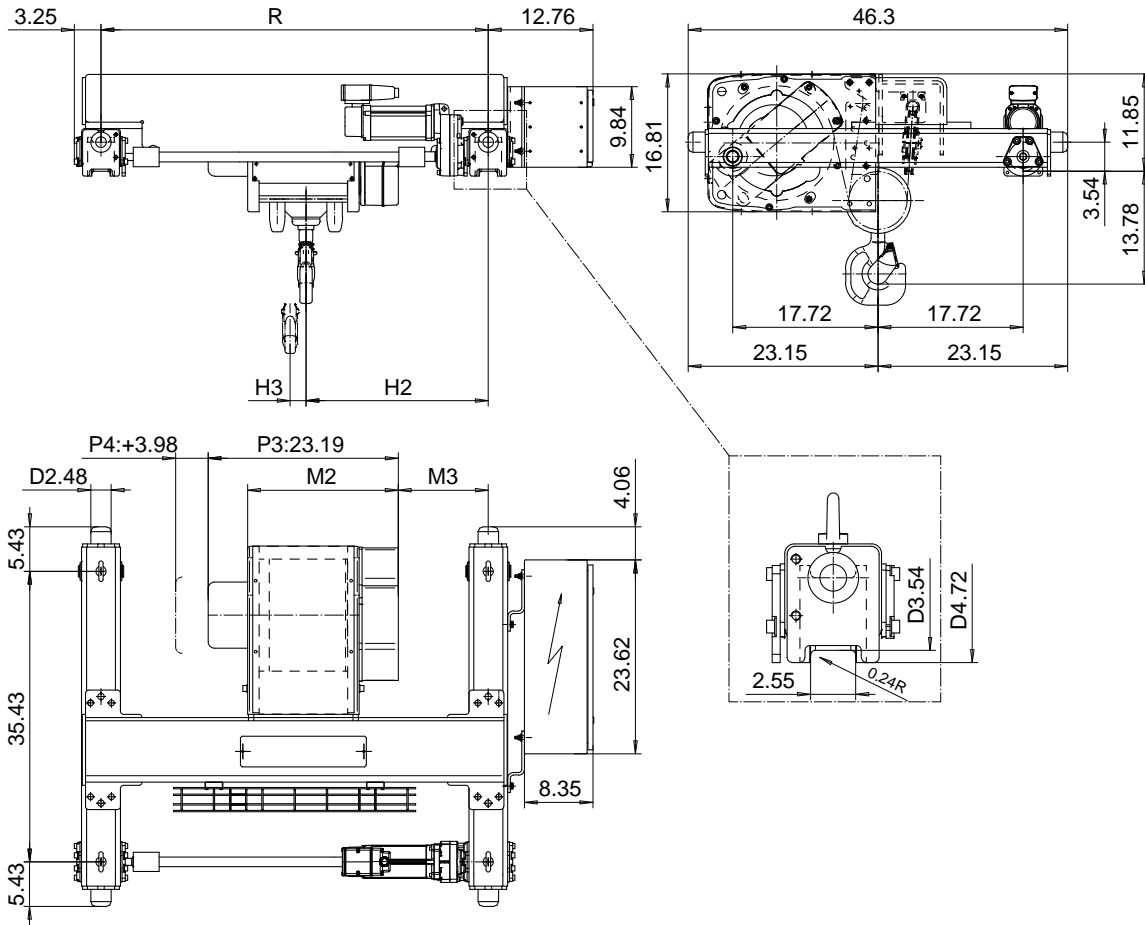


DOUBLE GIRDER, MEDIUM, 4 PART SINGLE

Hoist type:
SX4 041...D0

US-60Hz




Load (TON)	Class ASME	Hoisting speed (ft/min)		
		Gear+Motor code:		
		E+P3	F+P3	H+P4
3	H4+	16/2.4	20/3.1	30/4.9
4	H4+	16/2.4	20/3.1	30/4.9
5	H4	16/2.4	20/3.1	30/4.9
+ weight (lb):		-	-	40

HOL	Length	M2	M3	H2	H3	min R	Weight
(ft)	code	(inch)	(inch)	(inch)	(inch)	(ft)	(lb)
19'-8"	B	18.38	11.02	22.24	1.92	3'-11 1/4"	630
29'-6"	C	22.32	11.02	22.24	2.91	3'-11 1/4"	650
39'-4"	D	26.25	13.85	25.07	3.89	4'-7 1/8"	680
49'-2"	E	30.98	13.85	25.07	5.07	4'-7 1/8"	720

Note: minR is minimum rail gauge when second brake is supplied
Standard rail gauges are 3'-11 1/4", 4'-7 1/8", 5'-6 7/8", and 6'-6 3/4"

This document is the absolute property of R&M Materials Handling, Inc. This document must not be copied without the written permission of R&M Materials Handling, Inc. The contents thereof must not be disclosed to a third party nor be used for any unauthorized purpose. Contravention will be prosecuted.

Design	Chd	Appd	Ref Drawing	QB-M-04
Date	TROLLEY; DOUBLE GIRDER			 1:10 Tolerance
SLE/REN/01 Owner Dept	MEDIUM, 4 ROPE FALLS			
R&M MATERIALS HANDLING, INC. SHEWAN-WALMSLEY	D002095-A			Drawn 4