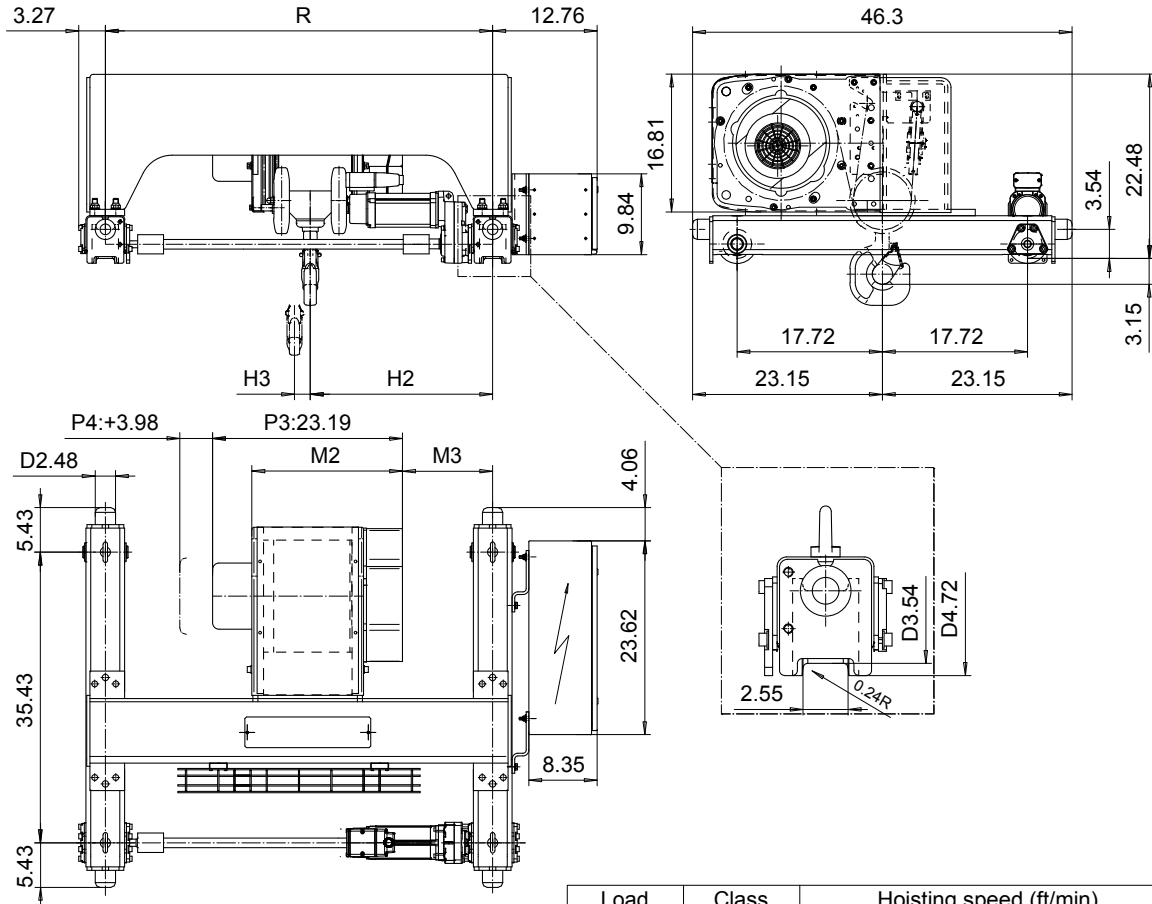


DOUBLE GIRDER, HIGH CONNECTION, 4 PART SINGLE
 Hoist type:
 SX4 041...DH

US-60Hz

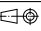


Load (T)	Class ASME	Hoisting speed (ft/min)		
		Gear+Motor code:		
		E+P3	F+P3	H+P4
3	H4+	16/2.4	20/3.1	30/4.9
4	H4+	16/2.4	20/3.1	30/4.9
5	H4	16/2.4	20/3.1	30/4.9
+ weight (lb):		-	-	40

HOL (ft)	Length code	M2 (inch)	M3 (inch)	H2 (inch)	H3 (inch)	min R (ft)	Weight (lb)
19'-8"	B	18.38	5.11	16.33	1.92	2'-11 3/8"	650
29'-6"	C	22.32	5.11	16.33	2.91	2'-11 3/8"	670
39'-4"	D	26.25	4.01	15.23	3.89	2'-11 3/8"	710
49'-2"	E	30.98	9.92	21.14	5.07	3'-11 1/4"	750

Note: minR is minimum rail gauge when second brake is supplied
 Standard rail gauges are 2'-11 3/8", 3'-11 1/4", 4'-7 1/8", 5'-6 7/8",
 and 6'-6 3/4"

This document is the absolute property of R&M Materials Handling, Inc. This document must not be copied without the written permission of R&M Materials Handling, Inc. The contents thereof must not be disclosed to a third party nor be used for any unauthorized purpose. Contravention will be prosecuted.

Design	Chd	Appd	Ref Drawing	QB-H-04
Date	TROLLEY; DOUBLE GIRDER			 1:10 Folder
SLEQBNG1 Owner Dept	HIGH, 4 ROPE FALLS			
R&M	R&M MATERIALS HANDLING, INC. HOIST & CRANE PRODUCTS			Issue
	D002230-A			4