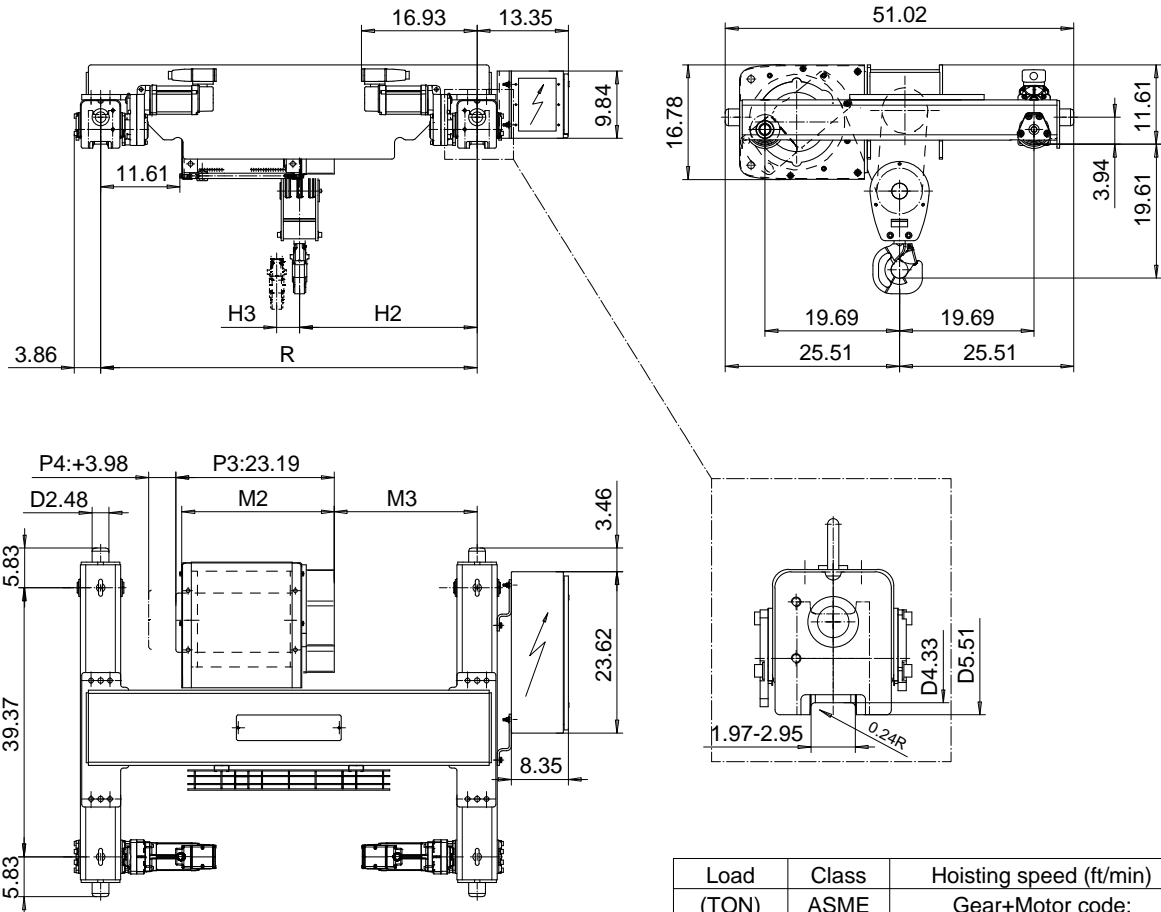


# DOUBLE GIRDER, MEDIUM, 6 PART SINGLE

Hoist type:  
SX4 061...D0

US-60Hz



Load (TON)	Class ASME	Hoisting speed (ft/min)	
		Gear+Motor code:	
		F+P3	H+P4
6	H4+	12.5/1.9	20/3.1
7 1/2	H4	12.5/1.9	20/3.1
+ weight (lb):		-	40

HOL (ft)	Length code	M2 (inch)	M3 (inch)	H2 (inch)	H3 (inch)	min R (ft)	Weight (lb)
19'-8"	C	22.32	20.90	25.98	1.92	4'-7 1/8"	1060
26'-2"	D	26.25	26.81	31.88	2.55	5'-6 7/8"	1140
32'-9"	E	30.98	32.71	37.79	3.34	6'-6 3/4"	1200

Note: minR is minimum rail gauge when second brake is supplied  
Standard rail gauges are 4'-7 1/8", 5'-6 7/8", and 6'-6 3/4"

This document is the absolute property of R&M Materials Handling, Inc. This document must not be copied without the written permission of R&M Materials Handling, Inc. The contents thereof must not be disclosed to a third party nor be used for any unauthorized purpose. Contravention will be prosecuted.

ETFPAL Design	ETFPAL Chd	Appd	Ref Drawing	QB-M-06
2002-08-28 Date	TROLLEY; DOUBLE GIRDER			1 of 12 Folder
SLEQDOCV Owner Dept	MEDIUM, 6 ROPE FALLS			
R&M MATERIALS HANDLING, INC. HOIST & CRANE PRODUCTS SHEPHERD, OHIO	D002099-A			Issue 6