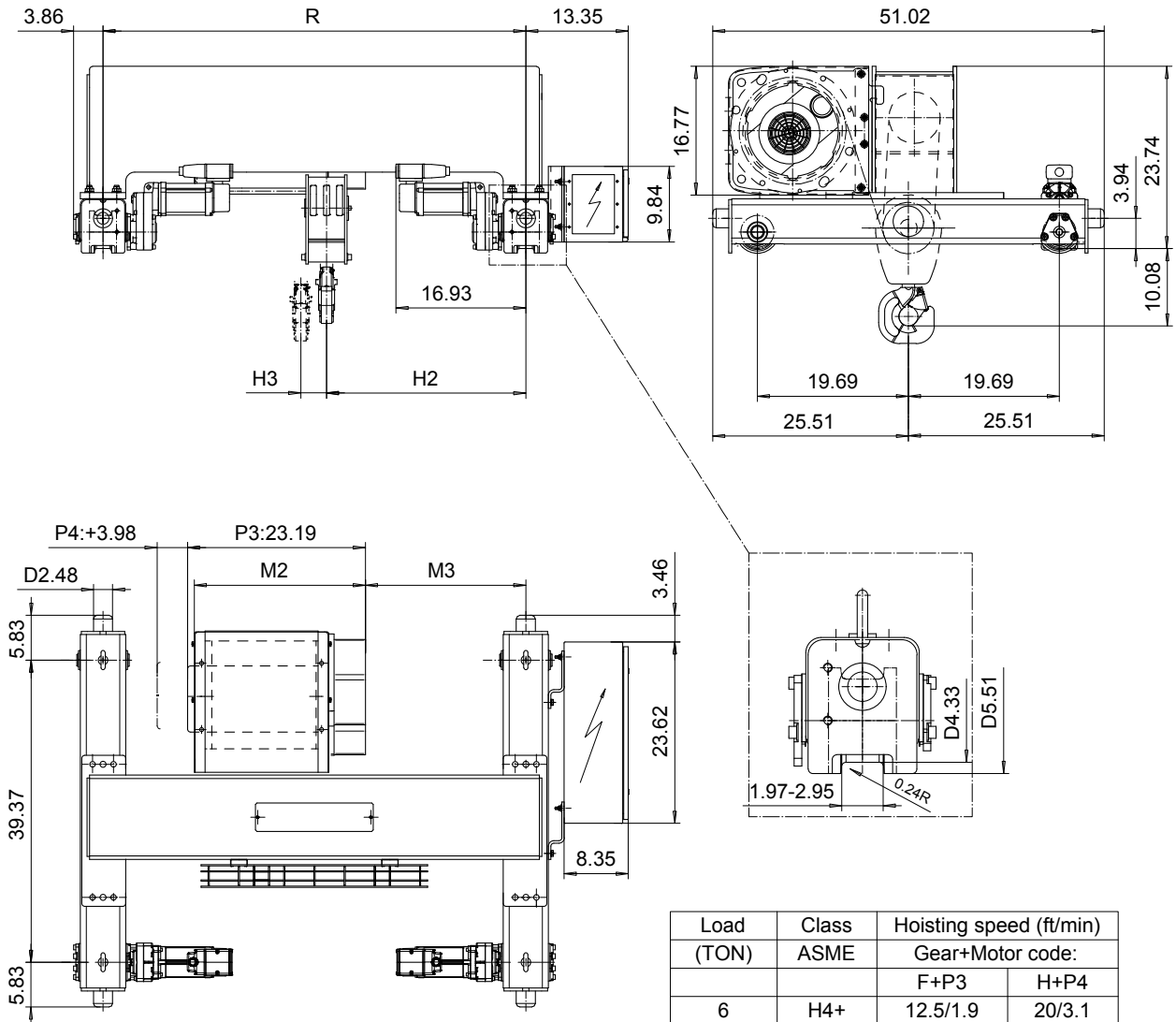


DOUBLE GIRDER, HIGH CONNECTION, 6 PART SINGLE
Hoist type:
SX4 061...DH

US-60Hz




Load (TON)	Class ASME	Hoisting speed (ft/min)	
		Gear+Motor code:	
		F+P3	H+P4
6	H4+	12.5/1.9	20/3.1
7 1/2	H4	12.5/1.9	20/3.1
+ weight (lb):		-	40

HOL (ft)	Length code	M2 (inch)	M3 (inch)	H2 (inch)	H3 (inch)	min R (ft)	Weight (lb)
19'-8"	C	22.32	16.96	22.04	1.92	3'-11 1/4"	1110
26'-2"	D	26.25	16.96	22.04	2.55	3'-11 1/4"	1130
32'-9"	E	30.98	20.90	25.98	3.4	4'-7 1/8"	1190

Note: minR is minimum rail gauge when second brake is supplied
 Standard rail gauges are 3'-11 1/4", 4'-7 1/8", 5'-6 7/8", and 6'-6 3/4"

This document is the absolute property of R&M Materials Handling, Inc. This document must not be copied without the written permission of R&M Materials Handling, Inc. The contents thereof must not be disclosed to a third party nor be used for any unauthorized purpose. Contravention will be prosecuted.

ETTATA Design	ETTFAL Chd	Appd	Ref Drawing	QB-H-06
2002-10-11 Date	TROLLEY; DOUBLE GIRDER			 1:10 Foldover
SLEQDCV Owner Dept	HIGH, 6 ROPE FALLS			
R&M MATERIALS HANDLING, INC. HOIST & CRANE PRODUCTS	D002236-A			Issue 5