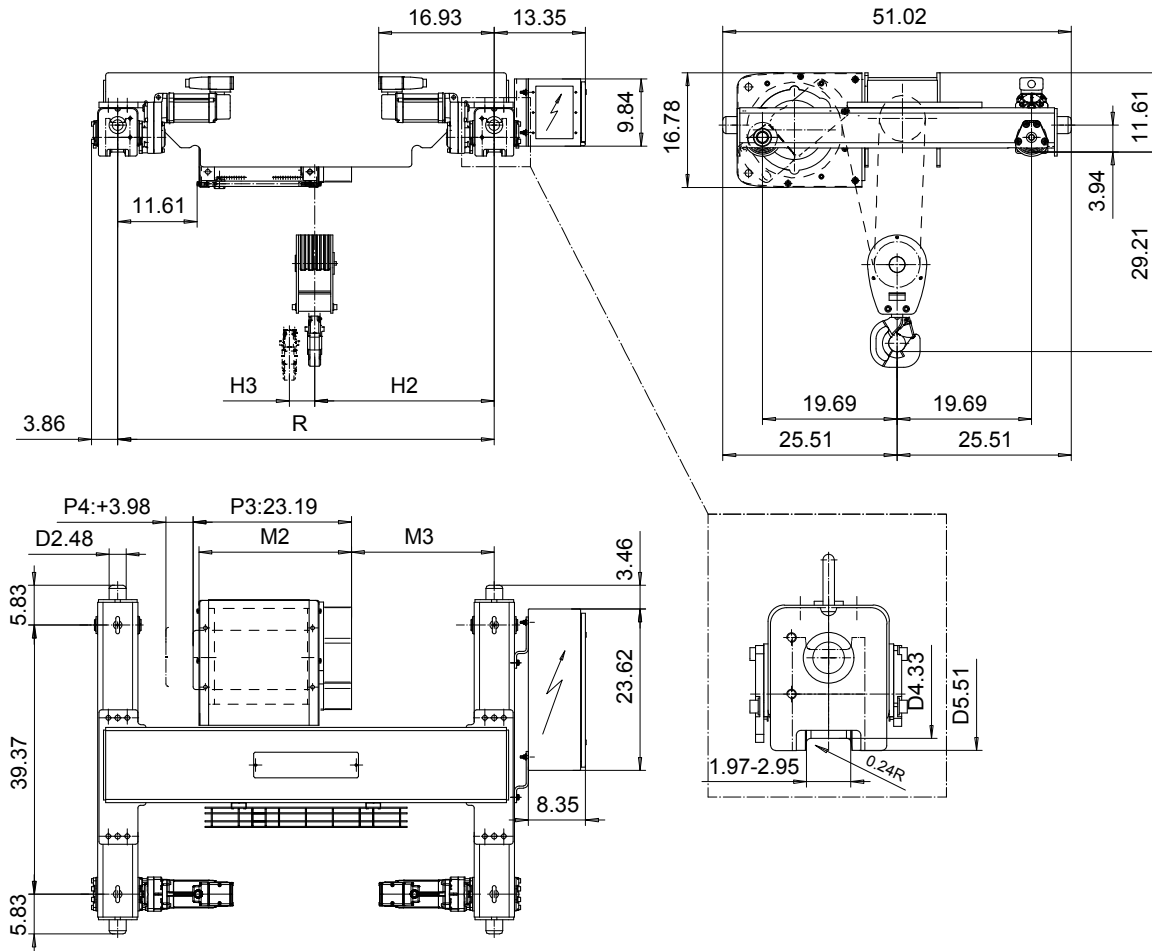


**DOUBLE GIRDER, MEDIUM, 8 PART SINGLE**  
**Hoist type:**  
**SX4 081...D0**

**US-60Hz**



Load (TON)	Class ASME	Hoisting speed (ft/min)	
		Gear+Motor code:	
		F+P3	H+P4
7 1/2	H4	10/1.5	16/2.4
10	H3	10/1.5	16/2.4
+ weight (lb):		-	40

HOL (ft)	Length code	M2 (inch)	M3 (inch)	H2 (inch)	H3 (inch)	min R (ft)	Weight (lb)
14'-9"	C	22.32	20.90	26.29	1.45	4'-7 1/8"	1310
19'-8"	D	26.25	26.81	32.20	1.92	5'-6 7/8"	1400
24'-7"	E	30.98	32.71	38.11	2.51	6'-6 3/4"	1480

Note: minR is minimum rail gauge when second brake is supplied  
 Standard rail gauges are 4'-7 1/8", 5'-6 7/8", and 6'-6 3/4"

This document is the absolute property of R&M Materials Handling, Inc. This document must not be copied without the written permission of R&M Materials Handling, Inc. The contents thereof must not be disclosed to a third party nor be used for any unauthorized purpose. Contravention will be prosecuted.

ETFPAL Design	ETFPAL Chd	Appd	Ref Drawing	QB-M-08
2002-08-28 Date	TROLLEY; DOUBLE GIRDER			1 of 12 Folder
SLEQDCV Owner Dept	MEDIUM, 8 ROPE FALLS			
R&M MATERIALS HANDLING, INC. HOIST & CRANE PRODUCTS	D002103-A			Issue 6