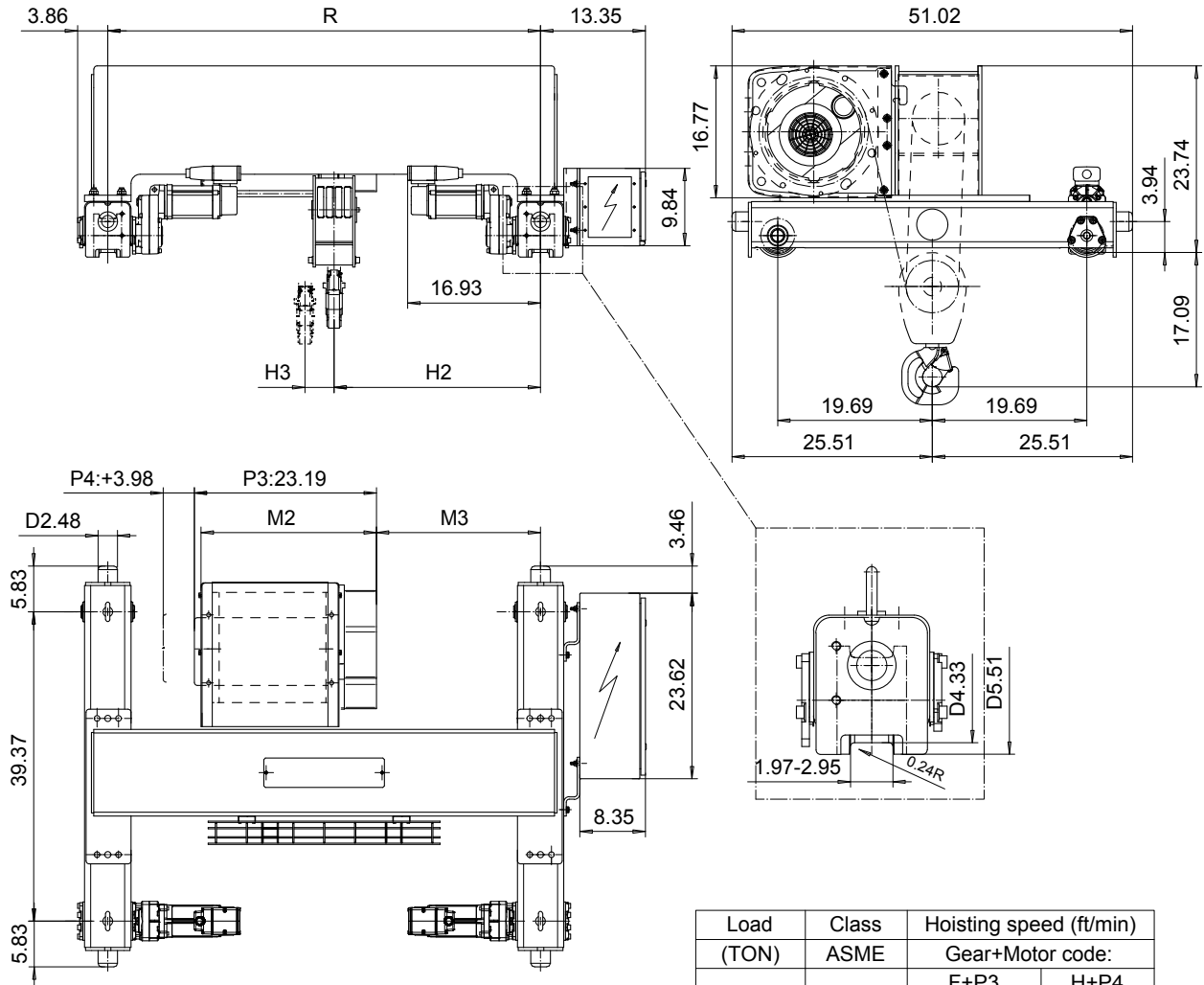


DOUBLE GIRDER, HIGH CONNECTION, 8 PART SINGLE
 Hoist type:
 SX4 081...DH

US-60Hz



Load (TON)	Class ASME	Hoisting speed (ft/min)	
		Gear+Motor code: F+P3	H+P4
7 1/2	H4	10/1.5	16/2.4
10	H3	10/1.5	16/2.4
+ weight (lb):		-	40

HOL (ft)	Length code	M2 (inch)	M3 (inch)	H2 (inch)	H3 (inch)	min R (ft)	Weight (lb)
14'-9"	C	22.32	16.96	22.36	1.45	3'-11 1/4"	1360
19'-8"	D	26.25	16.96	22.36	1.92	3'-11 1/4"	1390
24'-7"	E	30.98	20.90	26.29	2.51	4'-7 1/8"	1470

Note: minR is minimum rail gauge when second brake is supplied
 Standard rail gauges are 3'-11 1/4", 4'-7 1/8", 5'-6 7/8", and 6'-6 3/4"

This document is the absolute property of R&M Materials Handling, Inc. This document must not be copied without the written permission of R&M Materials Handling, Inc. The contents thereof must not be disclosed to a third party nor be used for any unauthorized purpose. Contravention will be prosecuted.

ETTATA Design	ETTAL Chd	Appd	Ref Drawing	QB-H-08
2002-10-14 Date	TROLLEY; DOUBLE GIRDER			1:10 Folder
SLEQDCV Owner Dept	HIGH, 8 ROPE FALLS			
R&M MATERIALS HANDLING, INC. HOIST & CRANE PRODUCTS	D002237-A			Issue 5