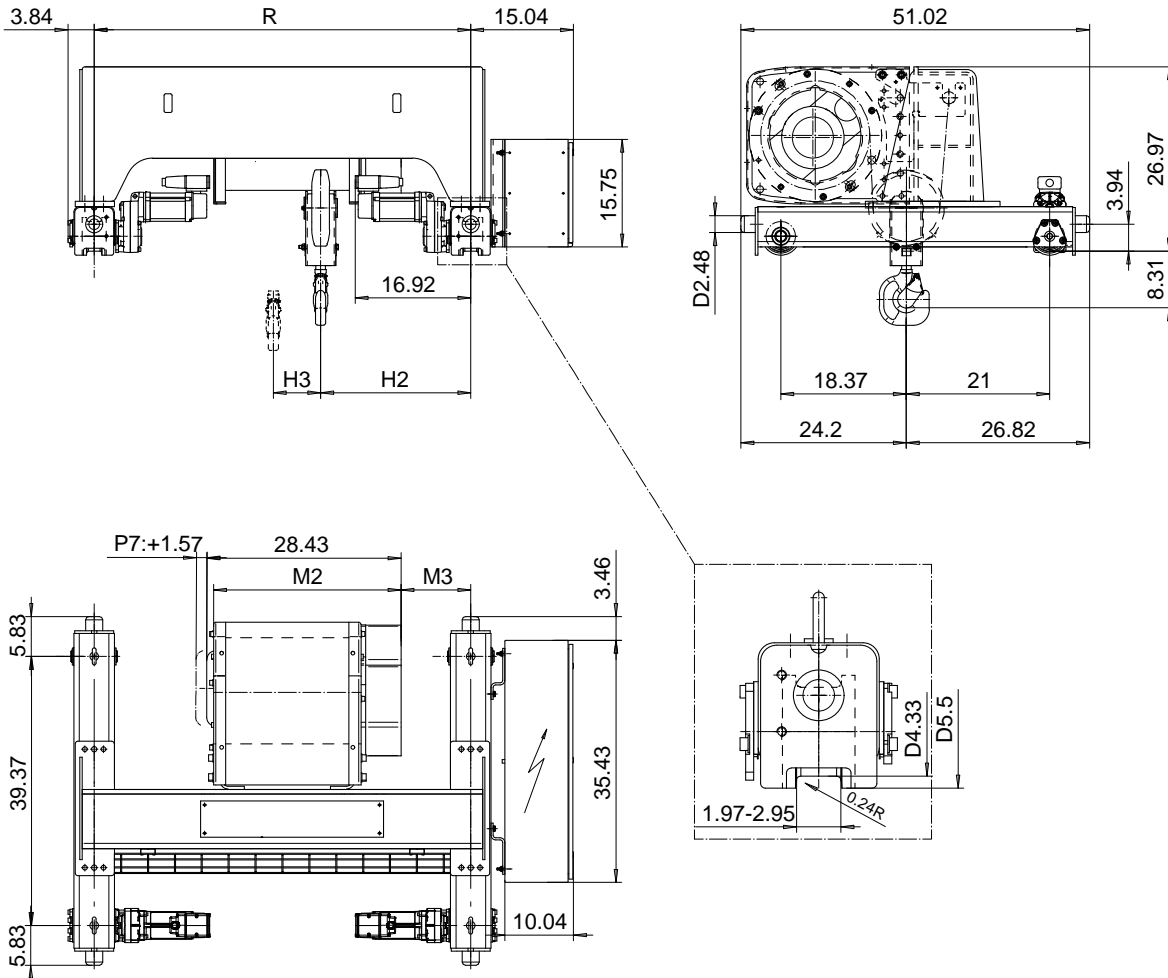


DOUBLE GIRDER, HIGH CONNECTION, 2 PART SINGLE
Hoist type:
SX5 021...DH

US-60Hz



Load (TON)	Class ASME	Hoisting speed (ft/min)			
		Gear+Motor code:			
		E+P5	F+P5	H+P6	J+P7
4	H4+	30/4.9	40/6.7	60/9.8	80/12.5
5	H4	30/4.9	40/6.7	60/9.8	80/12.5
+ weight (lb):		-	-	60	80

HOL (ft)	Length code	M2 (inch)	M3 (inch)	H2 (inch)	H3 (inch)	min R (ft)	Weight (lb)
59'-0"	D	27.44	6.25	18.03	6.92	3'-11 1/4"	1330
78'-8"	E	32.16	6.25	18.03	9.25	3'-11 1/4"	1380
104'-11"	F	38.07	4.80	16.57	12.16	3'-11 1/4"	1430
131'-2"	G	45.55	14.64	26.41	15.86	5'-6 7/8"	1590

Note: minR is minimum rail gauge when second brake is supplied
 Standard rail gauges are 3'-11 1/4", 4'-7 1/8", 5'-6 7/8", and 6'-6 3/4"

This document is the absolute property of R&M Materials Handling, Inc. This document must not be copied without the written permission of R&M Materials Handling, Inc. The contents thereof must not be disclosed to a third party nor be used for any unauthorized purpose. Contravention will be prosecuted.

ETTATA Design	ETTAV Chd	Appd	Ref Drawing	QC-H-02
2002-10-14 Date	TROLLEY; DOUBLE GIRDER			1 of 12 Folder
SLEQDOCV Owner Dept	HIGH, 2 ROPE FALLS			
R&M MATERIALS HANDLING, INC. HOIST & CRANE PRODUCTS SHELTON, CT 06484	D002238-A			Issue 4