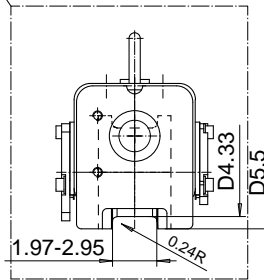
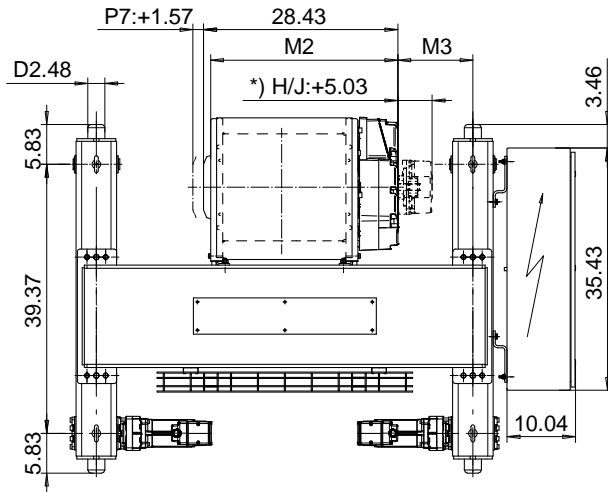
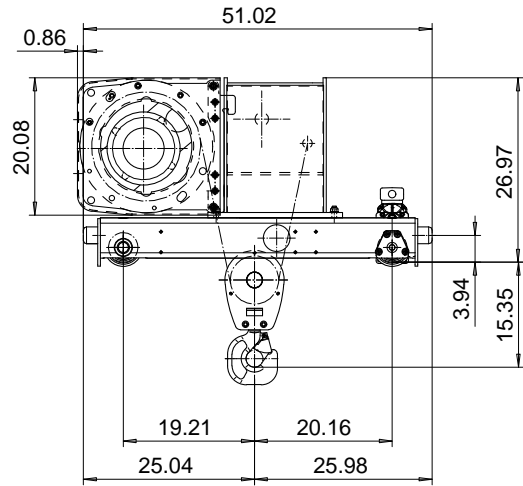
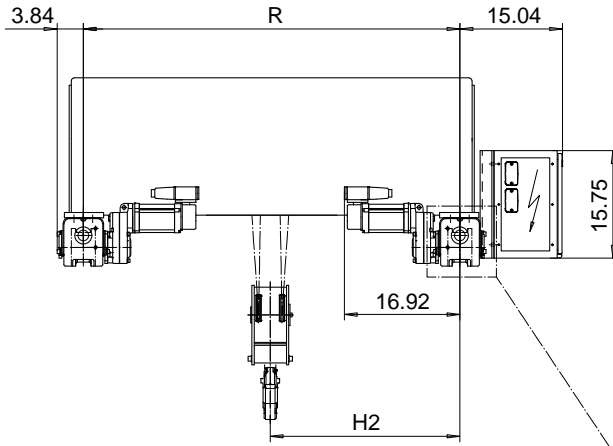


# DOUBLE GIRDER, HIGH CONNECTION, 2 PART DOUBLE

Hoist type:

SX5 022...DH

US-60Hz



Load (TON)	Class ASME	Hoisting speed (ft/min)		
		Gear+Motor code:		
		F+P5	H+P6	J+P7
4	H4+	40/6.7	60/9.8	80/12.5
5	H4	40/6.7	60/9.8	80/12.5
+ weight (lb):		-	60	80

HOL (ft)	Length code	M2 (inch)	M3 (inch)	H2 (inch)	min R (ft)	Weight (lb)
27'-10"	D	27.44	7.04	23.81	3'-11 1/4"	1440
42'-7"	E	32.16	4.60	23.81	3'-11 1/4"	1560
59'-0"	F	38.07	5.62	27.75	4'-7 1/8"	1580
82'-0"	G	45.55	7.75	33.66	5'-6 7/8"	1700
109'-10"	H	55.39	4.13	33.66	5'-6 7/8"	1760
150'-11"	J	69.17	10.07	47.67	7'-10 1/2"	1970

Note: minR is minimum rail gauge when second brake is supplied  
 Standard rail gauges are 3'-11 1/4", 4'-7 1/8", 5'-6 7/8", 6'-6 3/4", and 7'-10 1/2".  
 The brake is mounted to the gearcase on drum lengths H and J

This document is the absolute property of R&M Materials Handling, Inc. This document must not be copied without the written permission of R&M Materials Handling, Inc. The contents thereof must not be disclosed to a third party nor be used for any unauthorized purpose. Contravention will be prosecuted.

ETTATA Design 2002-10-16 Date	ETTAV Chd Appd	Ref Drawing	QC-H-22
SLEQDOCV Owner Dept	TROLLEY; DOUBLE GIRDER HIGH, 2x2 ROPE FALLS		1 of 12 Folder
R&M R&M MATERIALS HANDLING, INC. HOIST & CRANE PRODUCTS SARASOTA, FL 34237	D002243-A		Issue 4