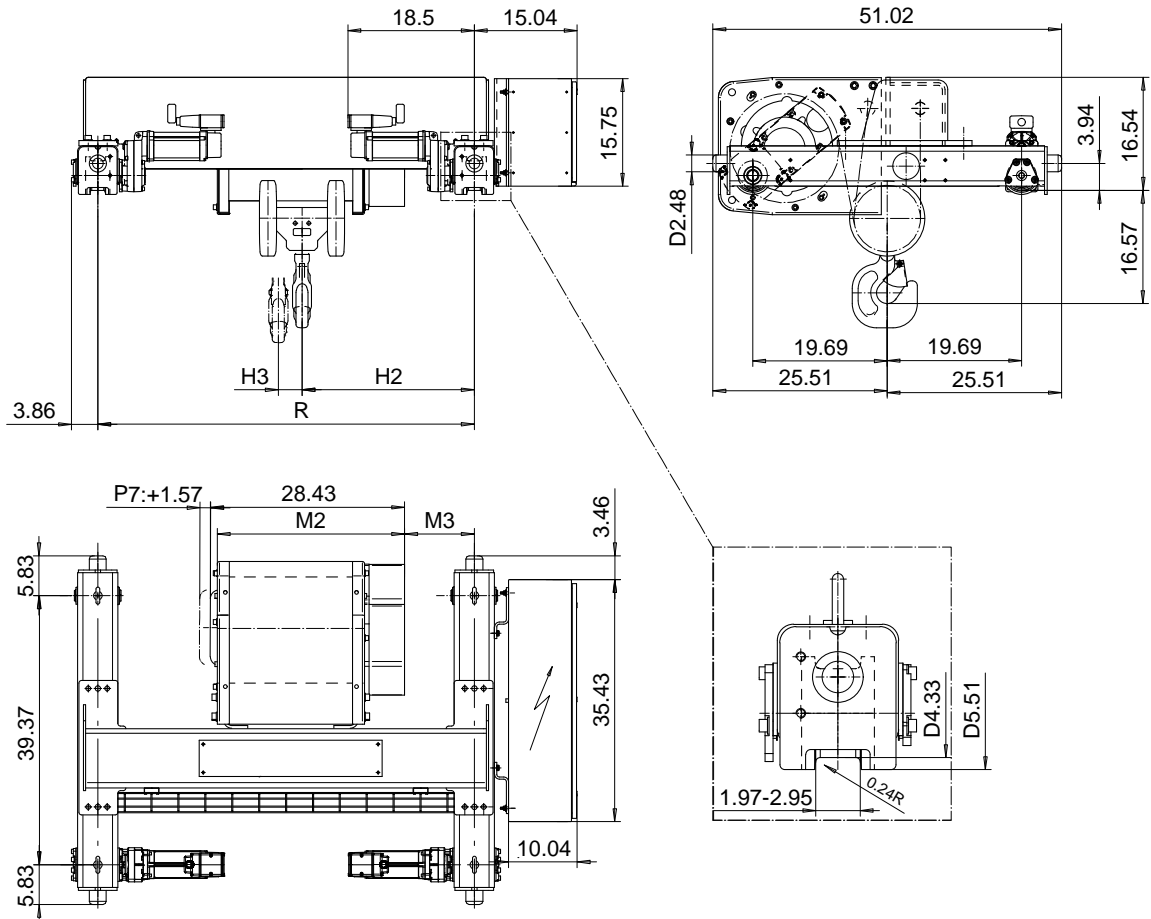


DOUBLE GIRDER, MEDIUM, 4 PART SINGLE
Hoist type:
SX5 041...D0

US-60Hz



Load (TON)	Class ASME	Hoisting speed (ft/min)			
		Gear+Motor code:			
		E+P5	F+P5	H+P6	J+P7
6	H4+	16/2.4	20/3.1	30/4.9	40/6.7
7 1/2	H4+	16/2.4	20/3.1	30/4.9	40/6.7
10	H4	16/2.4	20/3.1	30/4.9	40/6.7
+ weight (lb):		-	-	60	80

HOL (ft)	Length code	M2 (inch)	M3 (inch)	H2 (inch)	H3 (inch)	min R (ft)	Weight (lb)
29'-6"	D	27.44	10.19	25.19	3.46	4'-7 1/8"	1340
39'-4"	E	32.16	10.19	25.19	4.64	4'-7 7/8"	1400
52'-5"	F	38.07	14.64	29.64	6.14	5'-6 7/8"	1490
65'-7"	G	45.55	20.55	35.55	8.03	6'-6 3/4"	1570

Note: minR is minimum rail gauge when second brake is supplied
 Standard rail gauges are 4'-7 1/8", 5'-6 7/8", and 6'-6 3/4"

This document is the absolute property of R&M Materials Handling, Inc. This document must not be copied without the written permission of R&M Materials Handling, Inc. The contents thereof must not be disclosed to a third party nor be used for any unauthorized purpose. Contravention will be prosecuted.

ETFPAL Design 2002-08-29 Date	ETFPAL Chd Appd	Ref Drawing	QC-M-04
SLEQDCV Owner Dept	TROLLEY; DOUBLE GIRDER MEDIUM, 4 ROPE FALLS		1 of 12 Folder
R&M MATERIALS HANDLING, INC. HOIST & CRANE PRODUCTS SHEWAN/UMC	D002119-A		Issue 6