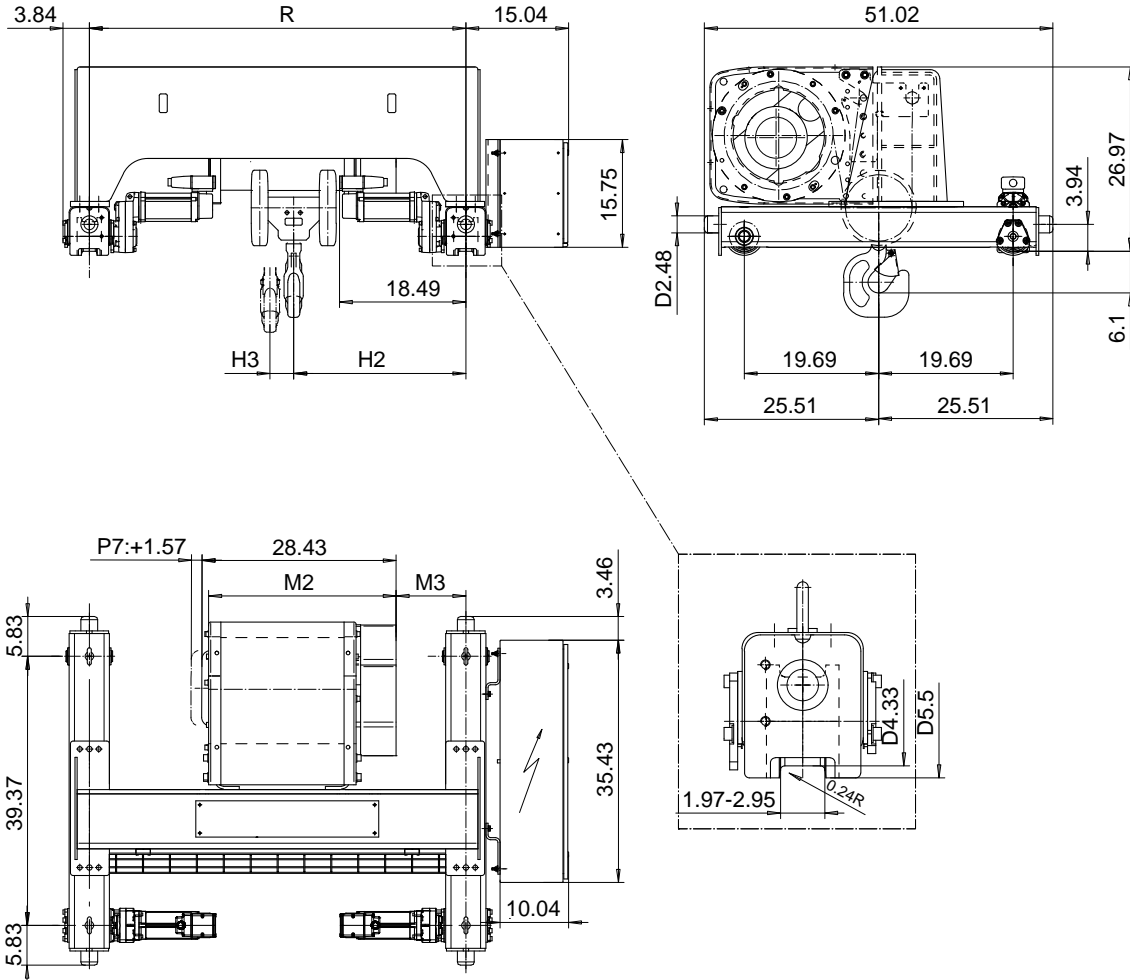


DOUBLE GIRDER, HIGH CONNECTION, 4 PART SINGLE

Hoist type:

SX5 041...DH

US-60Hz



Load (TON)	Class ASME	Hoisting speed (ft/min)			
		Gear+Motor code:			
		E+P5	F+P5	H+P6	J+P7
6	H4+	16/2.4	20/3.1	30/4.9	40/6.7
7 1/2	H4+	16/2.4	20/3.1	30/4.9	40/6.7
10	H4	16/2.4	20/3.1	30/4.9	40/6.7
+ weight (lb):		-	-	60	80

HOL (ft)	Length code	M2 (inch)	M3 (inch)	H2 (inch)	H3 (inch)	min R (ft)	Weight (lb)
29'-6"	D	27.44	6.25	21.25	3.46	3'-11 1/4"	1370
39'-4"	E	32.16	6.25	21.25	4.64	3'-11 1/4"	1420
52'-5"	F	38.07	4.80	19.80	6.14	3'-11 1/4"	1470
65'-7"	G	45.55	14.64	29.64	8.03	5'-6 7/8"	1630

Note: minR is minimum rail gauge when second brake is supplied
Standard rail gauges are 3'-11 1/4", 4'-7 1/8", 5'-6 7/8", and 6'-6 3/4"

This document is the absolute property of R&M Materials Handling, Inc. This document must not be copied without the written permission of R&M Materials Handling, Inc. The contents thereof must not be disclosed to a third party nor be used for any unauthorized purpose. Contravention will be prosecuted.

ETTATA	ETTAV	Appd	Ref Drawing	QC-H-04
Design	Chd			
2002-10-14				
Date				
SLEQDOCV	TROLLEY; DOUBLE GIRDER			1 of 12
Owner Dept	HIGH, 4 ROPE FALLS			Folder
R&M	R&M MATERIALS HANDLING, INC.			Issue
	HOIST & CRANE PRODUCTS			4
	SHELTERVILLE, OHIO			
	D002240-A			