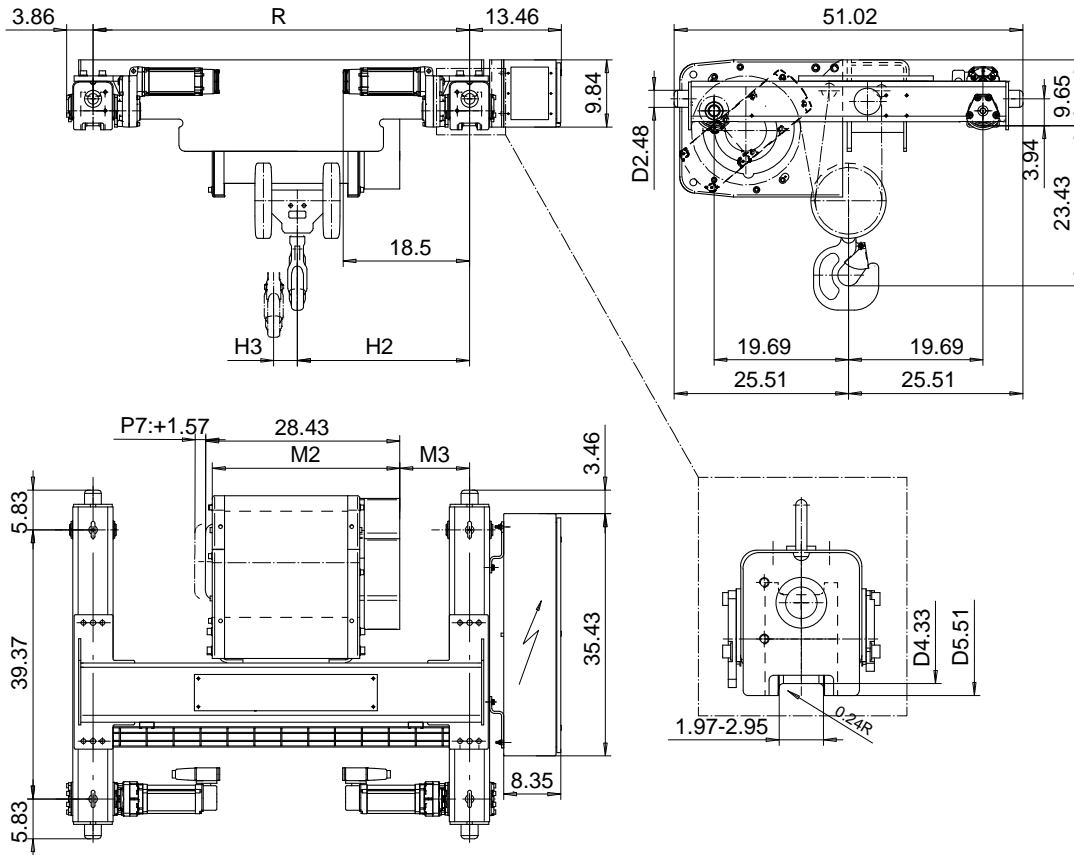


# DOUBLE GIRDER, LOW CLEARANCE, 4 PART SINGLE

Hoist type:

US-60Hz

SX5 041...DL



Load (TON)	Class ASME	Hoisting speed (ft/min)			
		Gear+Motor code:			
		E+P5	F+P5	H+P6	J+P7
6	H4+	16/2.4	20/3.1	30/4.9	40/6.7
7 1/2	H4+	16/2.4	20/3.1	30/4.9	40/6.7
10	H4	16/2.4	20/3.1	30/4.9	40/6.7
+ weight (lb):		-	-	60	80

HOL (ft)	Length code	M2 (inch)	M3 (inch)	H2 (inch)	H3 (inch)	min R (ft)	Weight (lb)
29'-6"	D	27.44	10.19	25.19	3.46	4'-7 1/8"	1340
39'-4"	E	32.16	10.19	25.19	4.64	4'-7 1/8"	1400
52'-5"	F	38.07	14.64	29.64	6.14	5'-6 7/8"	1490
65'-7"	G	45.55	20.55	35.55	8.03	6'-6 3/4"	1570

Note: minR is minimum rail gauge when second brake is supplied  
Standard rail gauges are 4'-7 1/8", 5'-6 7/8", and 6'-6 3/4".

This document is the absolute property of R&M Materials Handling, Inc. This document must not be copied without the written permission of R&M Materials Handling, Inc. The contents thereof must not be disclosed to a third party nor be used for any unauthorized purpose. Contravention will be prosecuted.

ETFPAL Design	ETFPAL Chd	Appd	Ref Drawing	QC-W-04
2002-08-30 Date	TROLLEY; DOUBLE GIRDER			1 of 12 Folder
SLEQDOCV Owner Dept	LOW, 4 ROPE FALLS			
R&M MATERIALS HANDLING, INC. HOIST & CRANE PRODUCTS SARASOTA, FL 34237	D002122-A			Issue 6