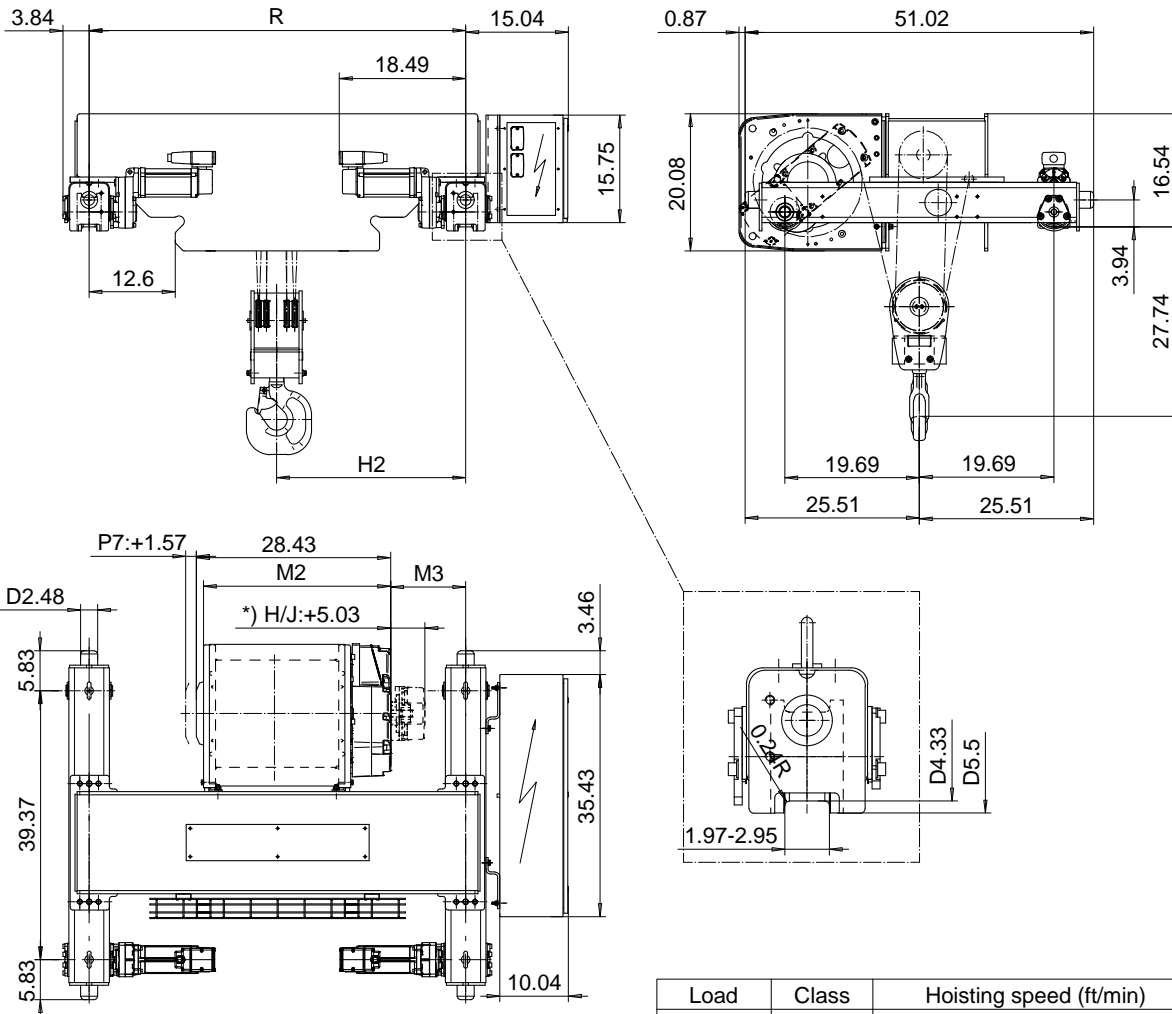


**DOUBLE GIRDER, MEDIUM, 4 PART DOUBLE  
Hoist type:**

**SX5 042...D0**

**US-60Hz**



Load (TON)	Class ASME	Hoisting speed (ft/min)		
		Gear+Motor code:		
		F+P5	H+P6	J+P7
6	H4+	20/3.1	30/4.9	40/6.7
7 1/2	H4+	20/3.1	30/4.9	40/6.7
10	H4	20/3.1	30/4.9	40/6.7
+ weight (lb):		-	60	80

HOL (ft)	Length code	M2 (inch)	M3 (inch)	H2 (inch)	min R (ft)	Weight (lb)
13'-1"	D	27.44	10.98	27.67	4'-7 1/8"	1560
21'-3"	E	32.16	8.54	27.75	4'-7 1/8"	1680
29'-6"	F	38.07	11.49	33.58	5'-6 7/8"	1700
41'-0"	G	45.55	7.75	33.66	5'-6 7/8"	1820
54'-1"	H	55.39	10.07	40.70	6'-6 3/4"	1880
75'-5"	J	69.17	10.07	47.59	7'-10 1/2"	2090

Note: minR is minimum rail gauge when second brake is supplied.  
Primary brake is mounted on gearcase for drum lengths H and J  
Standard rail gauges are 4'-7 1/8", 5'-6 7/8", 6'-6 3/4", and 7'-10 1/2"

This document is the absolute property of R&M Materials Handling, Inc. This document must not be copied without the written permission of R&M Materials Handling, Inc. The contents thereof must not be disclosed to a third party nor be used for any unauthorized purpose. Contravention will be prosecuted.

ETTPAL Design 2002-08-30 Date	ETTPAL Chd Appd Ref Drawing	QC-M-24
SLEQDOCV Owner Dept	TROLLEY; DOUBLE GIRDER MEDIUM, 2x4 ROPE FALLS	1 of 12 Folder
R&M R&M MATERIALS HANDLING, INC. HOIST & CRANE PRODUCTS SHEPHERD, OHIO	D002135-A	Issue 4